

OVER 60?

Secure this property
for up to **59% less!**



Price

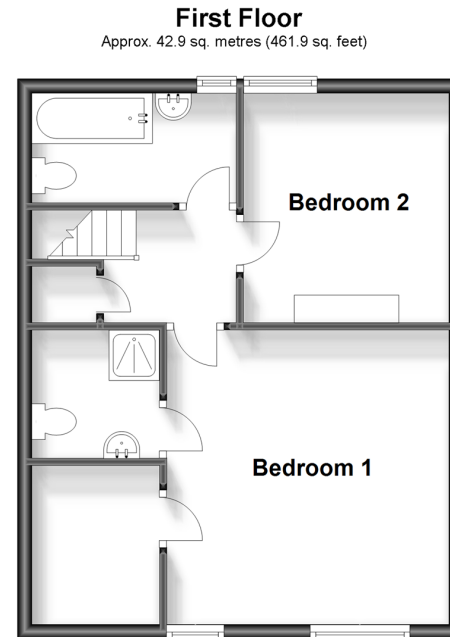
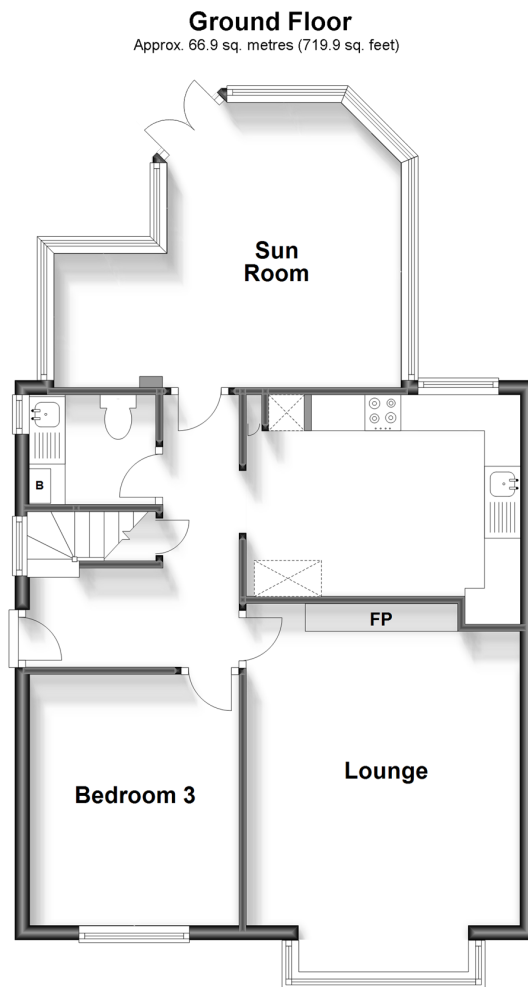
£585,000

Freehold

3x  2x  2x 

Warwick Road, Whitstable, Kent, CT5

Wards
Helping you move forwards



Accommodation

GROUND FLOOR

Entrance Hallway

Bedroom 3 : 11'0 x 9'0 (3.36m x 2.75m)

Lounge: 14'8 up to bay x 12'6 (4.47m x 3.81m)

Cloakroom

Kitchen: 12'0 x 9'0 (3.66m x 2.75m)

Sun Room: 17'0 x 13'0 (5.19m x 3.97m)

FIRST FLOOR

Landing

Bedroom 1: 13'11 x 13'0 (4.24m x 3.97m)

En-Suite Shower Room

Bedroom 2 : 9'0 x 9'0 (2.75m x 2.75m)

Bathroom

OUTBUILDINGS

Two Garden Sheds

OUTSIDE

Front Garden

Rear Garden



Main features

- Beautifully presented throughout
- Located in the Whitstable conservation area, a short walk to the High Street and beach
- Three well-proportioned bedrooms, with bedroom one benefiting from a dressing room and en-suite shower room
- A gorgeous and private rear garden
- A modern kitchen and new boiler both installed within the past few years



Nearest Schools

Primary Schools: Whitstable and Seasalter Endowed C of E Junior School 0.1 miles, Whitstable Junior School 0.2 miles, St Mary's Catholic Primary 0.5 miles

Secondary Schools: The Whitstable School 0.7 miles



Transport Information

Train Stations: Whitstable 1.0 miles, Chestfield & Swalecliffe 2.5 miles, Herne Bay 4.9 miles



Address

Warwick Road, Whitstable, Kent, CT5



Directions

For directions to this property please contact us.



Wards
Helping you move forwards

Call Whitstable Branch 01227 772272 ■ wardsofkent.co.uk



■ Legal advice should be taken to verify fixtures/fittings, planning, alterations and/or lease details ■ Appliances & services are untested, dimensions are approximate and floor plans are not to scale
■ Through a Homewise Home For Life Plan people aged 60+ can secure this property for up to 59% less, by purchasing a Lifetime Lease.



12033318/20240318/AR/KW