



**Guide Price**  
**£425,000**

**Freehold**

4x  2x  1x 

**Milner Road, Seasalter,  
Whitstable, Kent, CT5**

**OVER 60?**

Secure this property  
for up to **59% less!**

*Wards*  
Helping you move forwards



## Main features

- Beautifully modernised with herringbone parquet flooring
- Skylight and bi-fold doors in the lounge/diner
- Garage and utility outbuilding
- Swimming pool (not in use) in the private rear garden
- 2 bathrooms and well proportioned bedrooms

## Accommodation

### GROUND FLOOR

Hallway

Bedroom 1 : 15'2 x 11'5 (4.63m x 3.48m)

Bedroom 2 : 10'5 x 9'0 (3.18m x 2.75m)

Bathroom

Bedroom 3 : 10'4 x 9'0 (3.15m x 2.75m)

Bedroom 4 : 11'6 x 10'3 (3.51m x 3.13m)

Kitchen : 11'4 x 10'4 (3.46m x 3.15m)

Lounge / Diner : 16'1 x 11'5 (4.91m x 3.48m)

Shower Room

### OUTSIDE

Garage

Utility Room

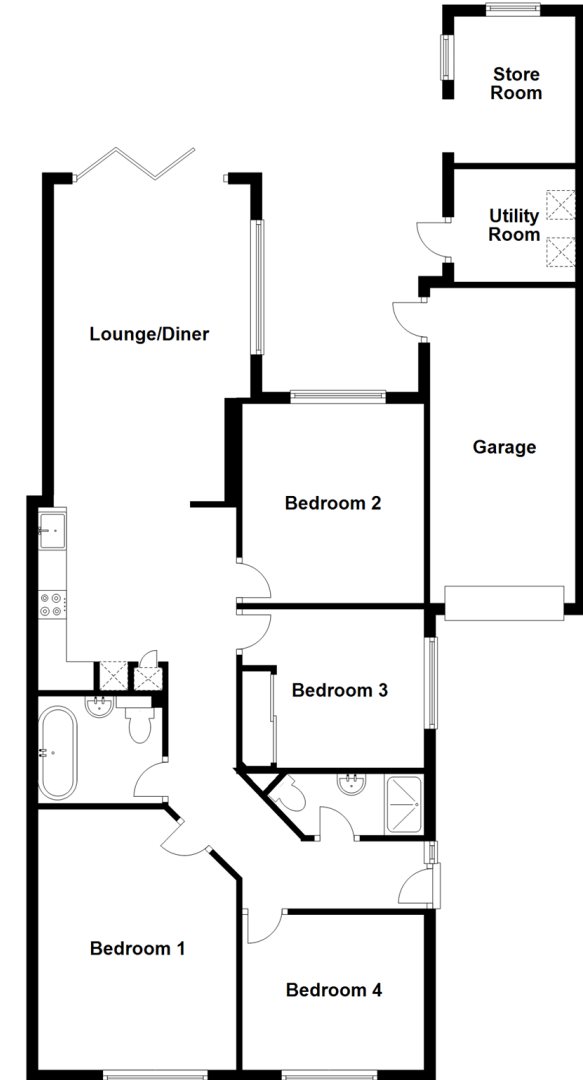
Store Room

Swimming Pool (not in use)

Driveway

Front & Rear Garden

**Ground Floor**  
Approx. 115.8 sq. metres (1246.6 sq. feet)



Total area: approx. 115.8 sq. metres (1246.6 sq. feet)

**Call Whitstable - 01227 772272 ■ [wardsforkent.co.uk](http://wardsforkent.co.uk)**

- Legal advice should be taken to verify fixtures/fittings, planning, alterations and/or lease details
- Appliances & services are untested, dimensions are approximate and floor plans are not to scale
- Through a Homewise Home For Life Plan people aged 60+ can secure this property for up to 59% less, by purchasing a Lifetime Lease.



12033384/20240716/FW/NF