



Price
£525,000

Freehold

3x  1x  2x 

**Cromwell Road,
Whitstable, Kent, CT5**

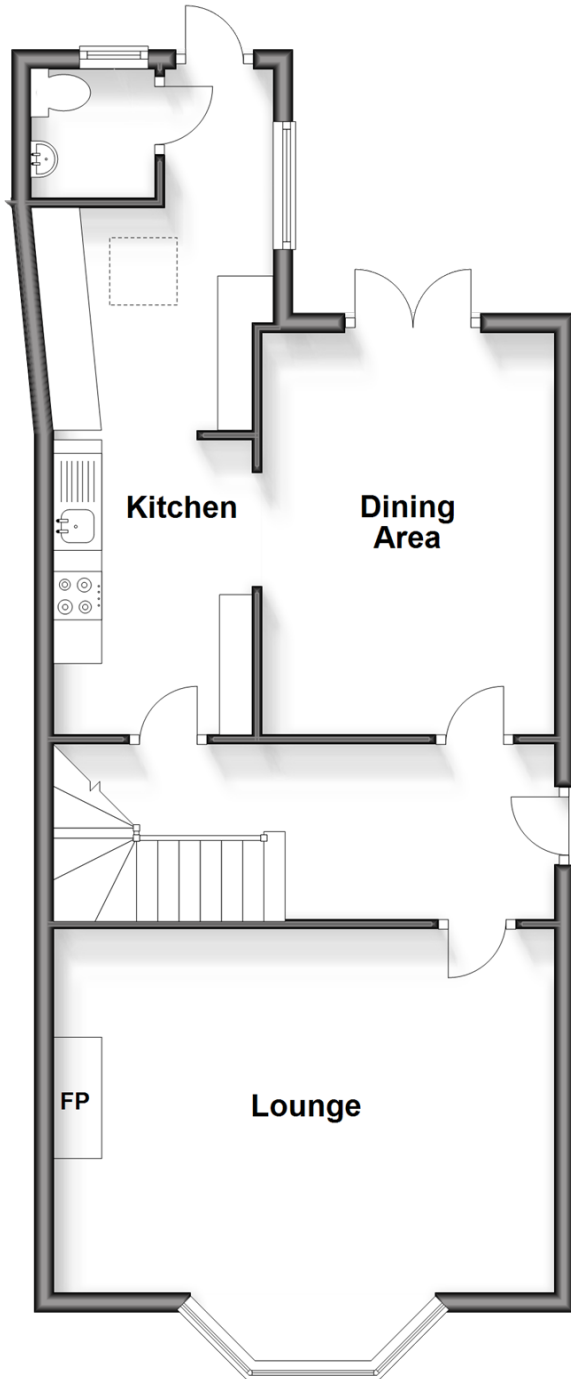
OVER 60?

Secure this property
for up to **59% less!**

Wards
Helping you move forwards

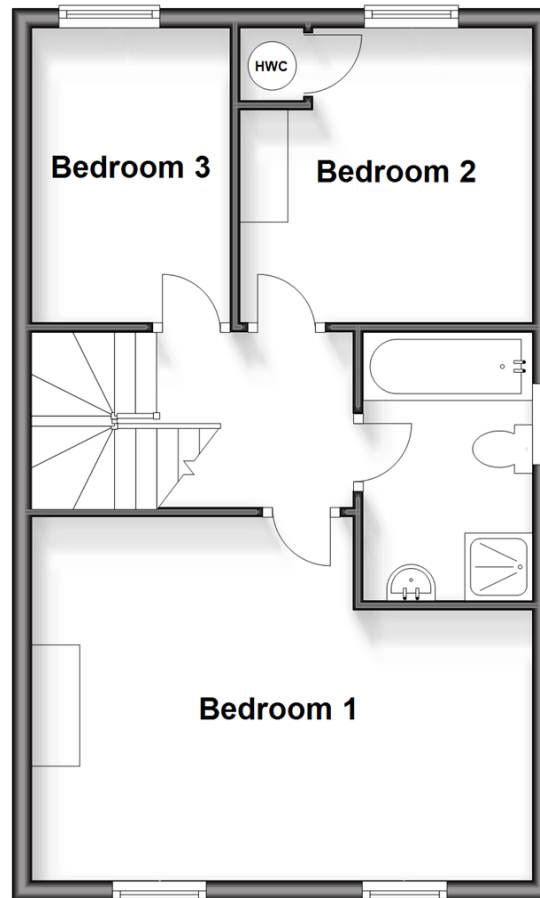
Ground Floor

Approx. 58.6 sq. metres (631.0 sq. feet)



First Floor

Approx. 45.7 sq. metres (491.4 sq. feet)



Accommodation

GROUND FLOOR

Hallway

Lounge: 17'3 x 14'9 (5.26m x 4.50m)

Dining Area: 13'7 x 9'11 (4.14m x 3.02m)

Kitchen: 18'4 x 7'10 (5.59m x 2.39m)

Cloakroom

FIRST FLOOR

Landing

Bedroom 1 : 17'1 x 12'5 (5.21m x 3.79m)

Bedroom 2: 9'11 x 9'11 (3.02m x 3.02m)

Bedroom 3: 10'2 x 6'9 (3.10m x 2.06m)

Bath & Shower Room

OUTSIDE

Rear Garden



Main features

- Beautifully presented throughout
- Short walking distance to Whitstable train station, High Street and the beach
- Resident parking permits are obtainable
- Spacious living areas downstairs with high ceilings and a flowing layout
- A stunning Edwardian home, constructed in 1903 and boasting desirable period features



Nearest Schools

Primary Schools: Whitstable Junior School 0.0 miles, Whitstable and Seasalter Endowed C of E Junior School 0.1 miles, Joy Lane Primary 0.5 miles

Secondary Schools: The Whitstable School 0.5 miles,



Transport Information

Train Stations: Whitstable 0.3 miles, Chestfield & Swalecliffe 1.7 miles, Herne Bay 3.9 miles



Address

Cromwell Road, Whitstable, Kent, CT5



Directions

For directions to this property please contact us.



Wards
Helping you move forwards

Call Whitstable Branch 01227 772272 ■ wardsofkent.co.uk



- Legal advice should be taken to verify fixtures/fittings, planning, alterations and/or lease details
- Appliances & services are untested, dimensions are approximate and floor plans are not to scale
- Through a Homewise Home For Life Plan people aged 60+ can secure this property for up to 59% less, by purchasing a Lifetime Lease.

EPC RATING

CURRENT: D(57) POTENTIAL: C(80)

12033402/20240409/NF/NF