



OVER 60?

Secure this property
for up to **59% less!**

Price

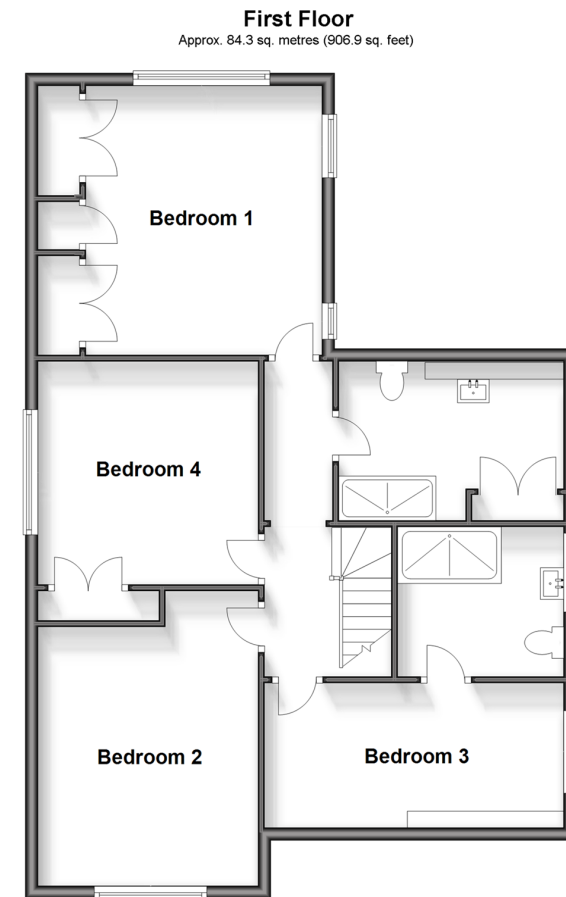
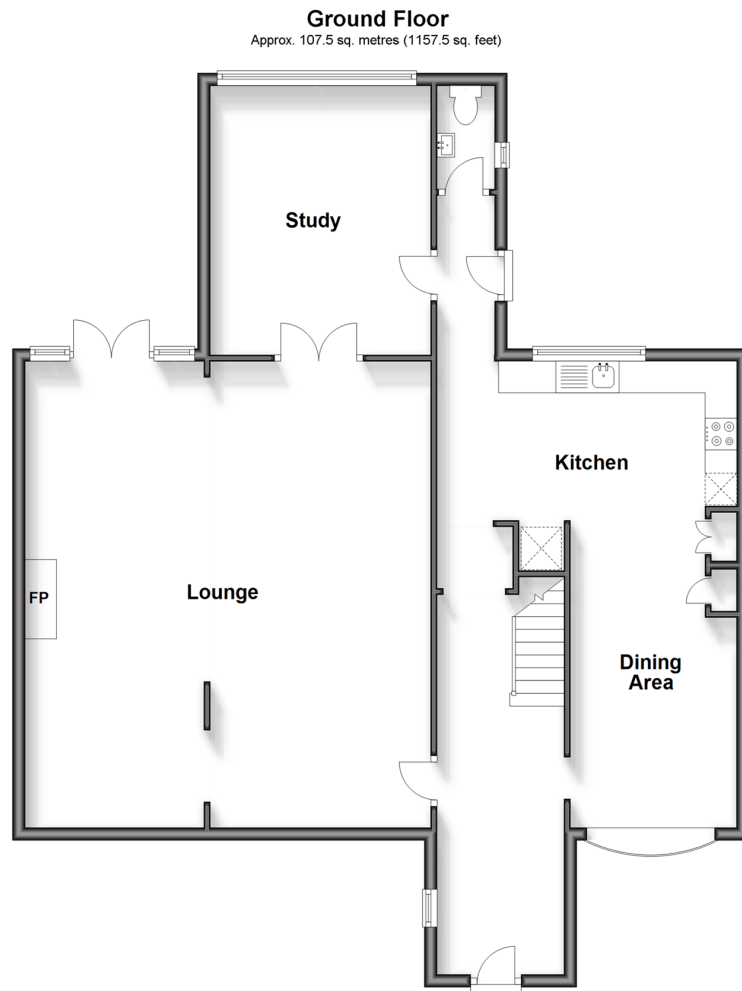
£700,000

Freehold

4x  2x  2x 

**Longtye Drive,
Chestfield, Whitstable,
Kent, CT5**

Wards
Helping you move forwards



Accommodation

GROUND FLOOR

Entrance Hall

Cloakroom

Kitchen/Dining Area: (L-shaped) 24'4 x 7'11
(7.42m x 2.41m) plus 15'3 x 8'1 (4.65m x 2.47m)

Lounge: 25'3 x 21'10 (7.70m x 6.66m)

Study: 14'0 x 10'10 (4.27m x 3.30m)

FIRST FLOOR

Landing

Bedroom 1: 14'2 x 12'3 (4.32m x 3.74m)

Shower Room

Bedroom 2: 15'2 x 11'5 (4.63m x 3.48m)

Bedroom 3: 14'5 x 7'5 (4.40m x 2.26m)

En-suite Shower Room

Bedroom 4: 11'5 x 11'5 (3.48m x 3.48m)

OUTSIDE

Driveway

Front Garden

Rear Garden



Main features

- Chain free
- Sunny rear garden with access to the Radfall recreation field behind
- New kitchen installed in 2022, complete with integrated AEG appliances
- Former garage was converted into an impressive lounge area with a study behind
- Well-proportioned bedrooms, perfect for a growing family



Nearest Schools

Primary Schools: Swalecliffe Community 0.9 miles, St Mary's Catholic 1.3 miles, Whitstable Junior School 1.7 miles.
Secondary Schools: The Community College Whitstable 1.0 miles, Herne Bay High School 2.4 miles.



Transport Information

Train Stations: Chestfield & Swalecliffe 0.9 miles, Whitstable 1.3 miles, Herne Bay 2.6 miles



Address

Longtye Drive, Chestfield, Whitstable, Kent, CT5



Directions

For directions to this property please contact us.



Wards
Helping you move forwards

Call Whitstable Branch 01227 772272 ■ wardsofkent.co.uk



- Legal advice should be taken to verify fixtures/fittings, planning, alterations and/or lease details
- Appliances & services are untested, dimensions are approximate and floor plans are not to scale
- Through a Homewise Home For Life Plan people aged 60+ can secure this property for up to 59% less, by purchasing a Lifetime Lease.



16002804/20231212/AR/NF