



Price
£485,000

Freehold

2x  1x  3x 

**Broomfield Gate,
Whitstable, Kent, CT5**

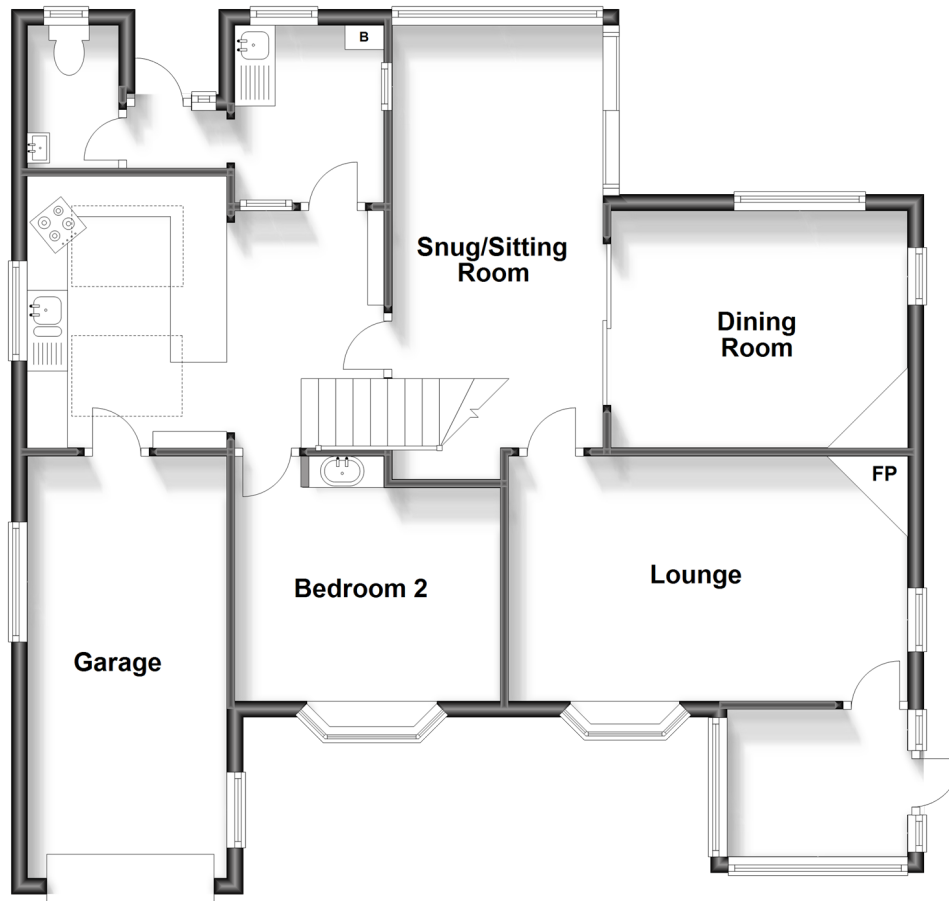
OVER 60?

Secure this property
for up to **59% less!**

Wards
Helping you move forwards

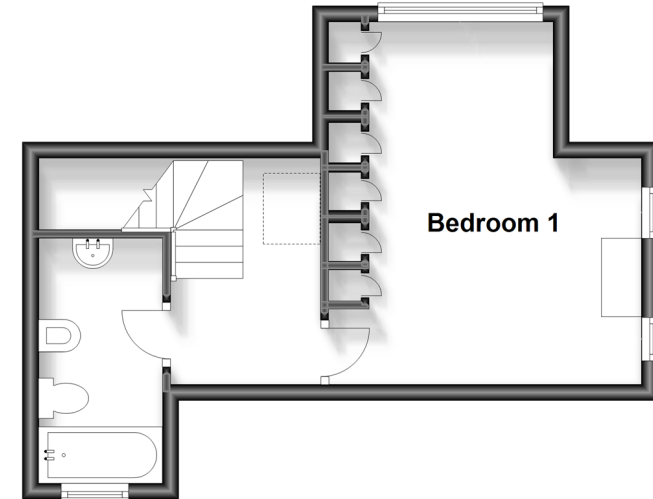
Split Level Ground Floor

Approx. 91.2 sq. metres (981.4 sq. feet)



First Floor

Approx. 27.6 sq. metres (296.6 sq. feet)



Accommodation

GROUND FLOOR

Lounge: 16'1 x 10'10 (4.91m x 3.30m)
Snug/Sitting Room: 19'7 x 8'7 (5.97m x 2.62m)
Dining Room: 13'1 x 9'4 (3.99m x 2.85m)
Kitchen: 14'1 x 10'5 (4.30m x 3.18m)
Utility room: 8'2 x 5'1 (2.49m x 1.55m)
W/C
Bedroom 2: 11'3 x 8'8 (3.43m x 2.64m)

FIRST FLOOR

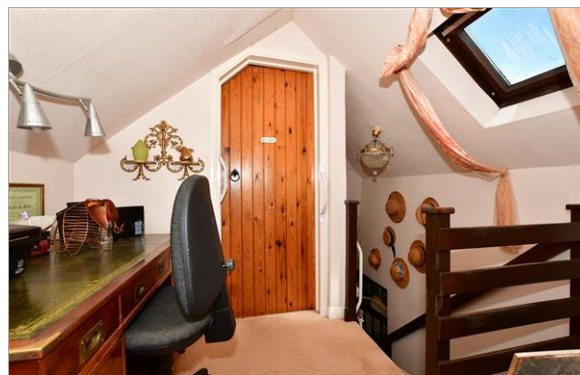
Bathroom: 11'3 x 5'3 (3.43m x 1.60m)
Bedroom 1: 14'3 x 12'1 (4.35m x 3.69m)

OUTSIDE

Front Garden

Rear Garden

Off Street Parking



Main features

- Beautiful tree-lined position with quiet woodland back drop
- Ample off street parking
- Ideal blank canvas offering the opportunity to create your own home
- Rare opportunity to buy in an exclusive road
- No chain

Nearest Schools

Primary Schools: Swalecliffe Community Primary 2.5 miles
Blean Primary 2.7 miles, Whitstable Junior School 2.8 miles
Secondary Schools: The Community College Whitstable 2.1 miles

Transport Information

Train Stations: Chestfield & Swalecliffe 2.1 miles,
Whitstable 2.8 miles, Canterbury West 4.3 miles

Address

Broomfield Gate, Whitstable, Kent, CT5

Directions

For directions to this property please contact us.



Wards
Helping you move forwards

Call Whitstable Branch 01227 772272 ■ wardsofkent.co.uk



- Legal advice should be taken to verify fixtures/fittings, planning, alterations and/or lease details
- Appliances & services are untested, dimensions are approximate and floor plans are not to scale
- Through a Homewise Home For Life Plan people aged 60+ can secure this property for up to 59% less, by purchasing a Lifetime Lease.



12033223/20231205/NF/MR