

**OVER 60?**

Secure this property  
for up to **59% less!**



**Price**

**£500,000**

**Freehold**

4x  1x  3x 

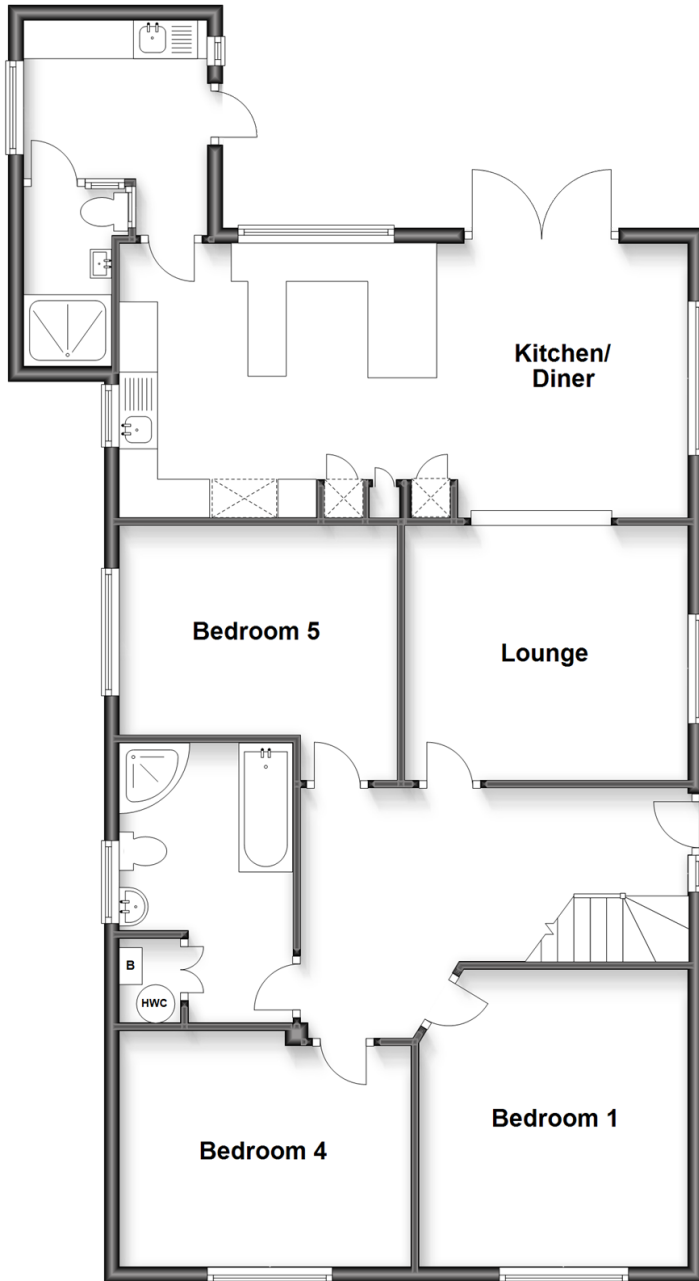
Hillside Road, Whitstable, Kent, CT5

*Wards*  
Helping you move forwards



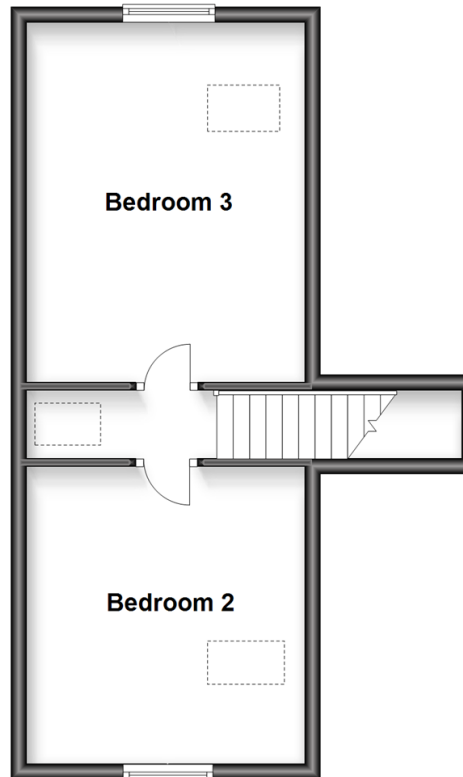
## Split Level Ground Floor

Approx. 107.9 sq. metres (1161.6 sq. feet)



## First Floor

Approx. 37.0 sq. metres (397.8 sq. feet)



## Accommodation

### SPLIT LEVEL GROUND FLOOR

Hall: 17'0 x 10'2 (5.19m x 3.10m)

Bedroom 1: 12'9 x 11'5 (3.89m x 3.48m)

Bedroom 4: 12'5 x 9'7 (3.79m x 2.92m)

Bathroom: 11'9 x 7'3 (3.58m x 2.21m)

Bedroom 5: 12'0 x 9'1 (3.66m x 2.77m)

Lounge: 12'2 x 10'9 (3.71m x 3.28m)

Kitchen/Diner: 25'3 x 11'6 (7.70m x 3.51m)

Utility Area/Shower Room: 9'4 x 7'8 (2.85m x 2.34m)

### FIRST FLOOR

Landing

Bedroom 2: 12'7 x 11'9 (3.84m x 3.58m)

Bedroom 3: 15'4 x 11'9 (4.68m x 3.58m)

### OUTSIDE

Driveway

Garage

Rear Garden



## Main features

- Chain-free!
- Impressive rear garden with an extensive lawn
- Option to utilise the space to encompass five bedrooms or use as a study
- Garage and Driveway provide ample room to park for a growing family
- Large kitchen/diner and separate utility area



### Nearest Schools

Primary Schools: Swalecliffe Community Primary 0.5 miles, St Mary's Catholic Primary 0.7 miles, Whitstable and Seasalter Endowed C of E Junior School 1.1 miles  
Secondary Schools: The Whitstable School, Whitstable 0.6 miles, Herne Bay High School 2.7 miles



### Transport Information

Train Stations: Whitstable 0.7 miles, Chestfield & Swalecliffe 0.8 miles, Herne Bay 2.9 miles



### Address

Hillside Road, Whitstable, Kent, CT5



### Directions

For directions to this property please contact us.





**Wards**  
Helping you move forwards

Call Whitstable Branch 01227 772272 ■ [wardsofkent.co.uk](http://wardsofkent.co.uk)



- Legal advice should be taken to verify fixtures/fittings, planning, alterations and/or lease details
- Appliances & services are untested, dimensions are approximate and floor plans are not to scale
- Through a Homewise Home For Life Plan people aged 60+ can secure this property for up to 59% less, by purchasing a Lifetime Lease.



12027693/20250118/AR/MR