



**Price**

**£500,000**

**Freehold**

3x  3x  1x 

**Millstream Close,  
Whitstable, Kent, CT5**

**OVER 60?**

You could get up to  
**59% off** the price!\*

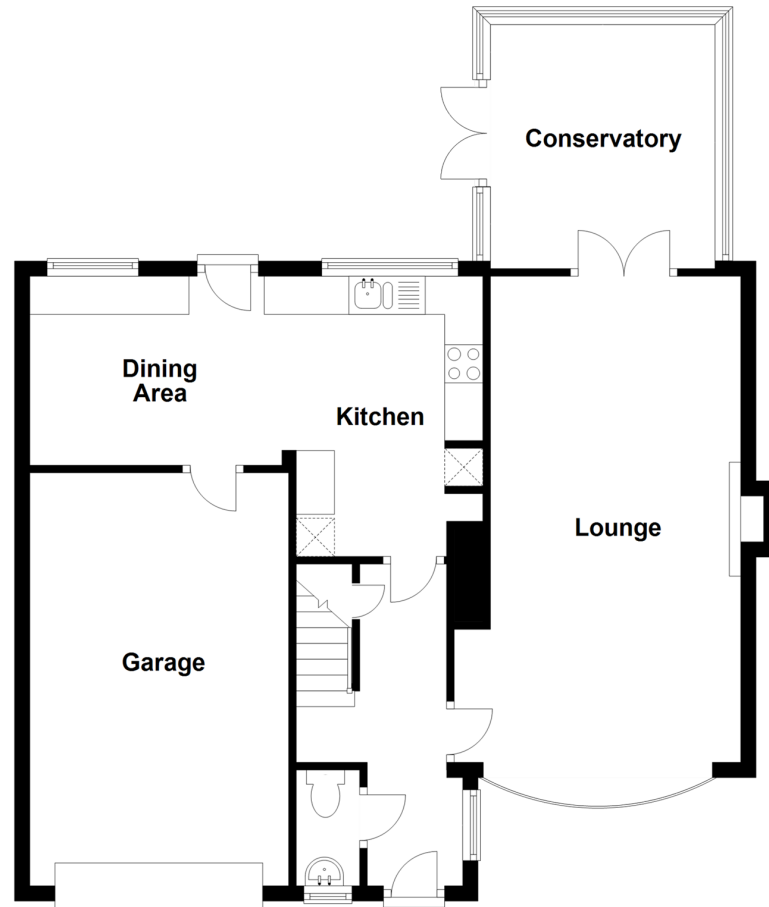


**Video Tour available**

**Wards**  
Helping you move forwards

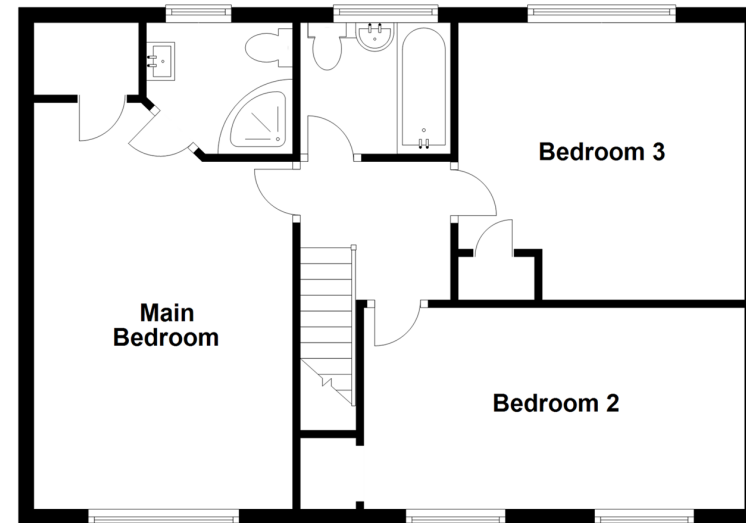
## Ground Floor

Approx. 78.5 sq. metres (845.4 sq. feet)



## First Floor

Approx. 59.3 sq. metres (638.1 sq. feet)



## Accommodation

### GROUND FLOOR

**Hall**

**Cloakroom**

**Lounge:** 20'9 x 12'3 (6.33m x 3.74m)

**Conservatory:** 11'2 x 10'9 (3.41m x 3.28m)

**Kitchen/Dining Area:** 12'11 at widest point x 8'1 at narrowest point (3.94m x 2.47m)

### FIRST FLOOR

**Landing**

**Main Bedroom:** 15'4 x 10'5 (4.68m x 3.18m)

**En-Suite Shower Room**

**Bedroom 2:** 12'2 x 12'0 (3.71m x 3.66m)

**Bedroom 3:** 16'5 x 8'6 (5.01m x 2.59m)

**Bathroom:** 6'7 x 5'6 (2.01m x 1.68m)

### OUTSIDE

**Front Garden**

**Drive**

**Garage:** 19'1 x 10'6 (5.82m x 3.20m)

**Rear Garden**





## Main features

- Semi-detached family home with double storey extension, now boasting 3 double bedrooms
- Family bathroom and En-Suite to Main Bedroom
- Finished to a wonderful condition
- Perfect location for commuters
- Local station just a few minutes walk away



### Nearest Schools

Primary Schools: Whitstable and Seasalter Endowed C of E Junior School 0.2 miles, Whitstable Junior School 0.3 miles, St Mary's Catholic Primary 0.4 miles

Secondary Schools: The Whitstable School, Whitstable



### Transport Information

Train Stations: Whitstable 0.1 miles, Chestfield & Swalecliffe 1.5 miles, Herne Bay 3.7 miles



### Address

Millstream Close, Whitstable, Kent, CT5



### Directions

For directions to this property please contact us.





**Wards**  
Helping you move forwards

Call Whitstable Branch 01227 772272 ■ [wardsofkent.co.uk](http://wardsofkent.co.uk)



- Legal advice should be taken to verify fixtures/fittings, planning, alterations and/or lease details
- Appliances & services are untested, dimensions are approximate and floor plans are not to scale
- Our Homewise partnership offer a 'Home for Life' plan to buyers over 60, granting a lifetime lease for your protection and reducing the purchase price by up to 59%



12032667/20210712/PG/MR