



Guide Price
£500,000

Freehold

3x  1x  2x 

**Wrotham Road, Welling,
Kent, DA16**

OVER 60?

Secure this property
for up to **59% less!**

Wards
Helping you move forwards



Main features

- Driveway and garage
- Summer house suitable for an office
- Good transport links
- Close to local amenities and schools
- Potential to extend further subject to planning permission

Accommodation

GROUND FLOOR

Entrance Porch
 Entrance Hall
 Lounge: 24'1 x 11'0 (7.35m x 3.36m)
 Kitchen: 18'1 x 5'9 (5.52m x 1.75m)
 Dining Area: 10'2 x 10'2 (3.10m x 3.10m)

FIRST FLOOR

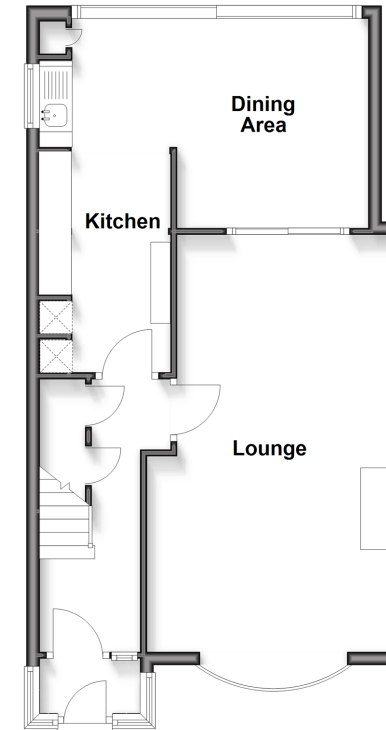
Landing
 Bedroom 1: 11'6 x 10'7 (3.51m x 3.23m)
 Bedroom 2: 11'8 x 8'6 (3.56m x 2.59m)
 Bedroom 3: 8'2 x 6'3 (2.49m x 1.91m)
 Shower Room

OUTSIDE

Garage
 Driveway
 Rear Garden
 Summer house

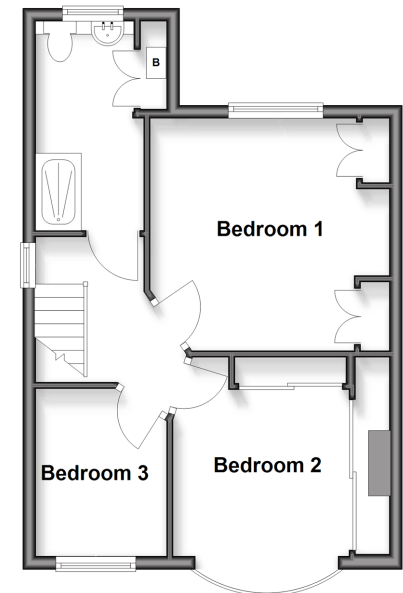
Ground Floor

Approx. 52.9 sq. metres (569.8 sq. feet)



First Floor

Approx. 39.5 sq. metres (425.6 sq. feet)



Call Welling - 020 8301 6679 ■ wardsofkent.co.uk

- Legal advice should be taken to verify fixtures/fittings, planning, alterations and/or lease details
- Appliances & services are untested, dimensions are approximate and floor plans are not to scale
- Through a Homewise Home For Life Plan people aged 60+ can secure this property for up to 50% less, by purchasing a Lifetime Lease.



15003942/20251101/RL/LK