



Guide Price
£400,000

Freehold

3x  1x  2x 

**Bennett Close, Welling,
Kent, DA16**

OVER 60?

Secure this property
for up to **59% less!**

Wards
Helping you move forwards



Main features

- Chain free
- Upstairs bathroom and downstairs cloakroom
- Good sized bedrooms
- Low maintenance rear garden
- Walking distance to Welling Train Station

Accommodation

GROUND FLOOR

Porch

Lounge: 17'0 x 12'9 (5.19m x 3.89m)

Dining Area: 15'0 x 8'8 (4.58m x 2.64m)

Kitchen: 11'1 x 7'8 (3.38m x 2.34m)

Cloakroom

FIRST FLOOR

Landing

Bedroom 1: 11'0 x 10'3 (3.36m x 3.13m)

Bedroom 2: 13'0 x 9'0 (3.97m x 2.75m)

Bedroom 3: 9'7 x 7'5 (2.92m x 2.26m)

Bathroom

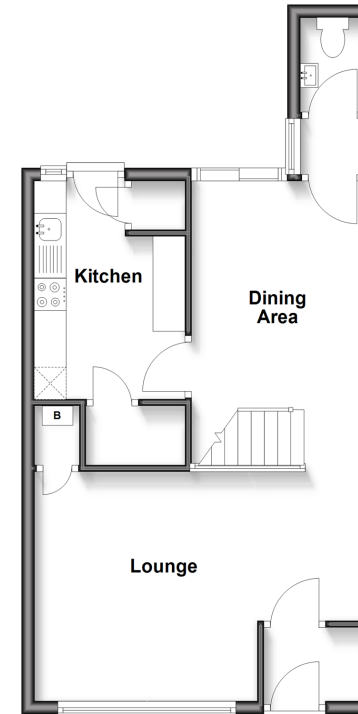
OUTSIDE

Front Garden

Rear Garden

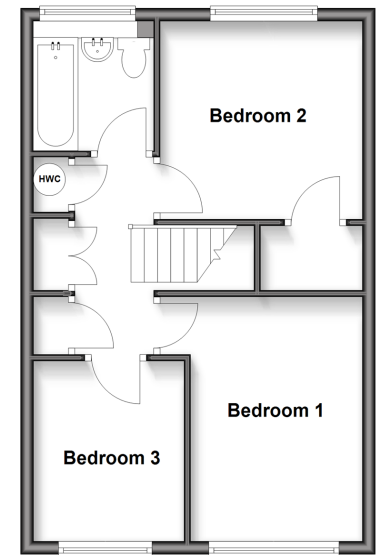
Ground Floor

Approx. 43.9 sq. metres (473.0 sq. feet)



First Floor

Approx. 41.0 sq. metres (441.1 sq. feet)



Call Welling - 020 8301 6679 ■ wardsofkent.co.uk

- Legal advice should be taken to verify fixtures/fittings, planning, alterations and/or lease details
- Appliances & services are untested, dimensions are approximate and floor plans are not to scale
- Through a Homewise Home For Life Plan people aged 60+ can secure this property for up to 50% less, by purchasing a Lifetime Lease.



15009278/20250812/RL/LK