



OVER 60?

Secure this property
for up to **59% less!**

Price

£700,000

Freehold

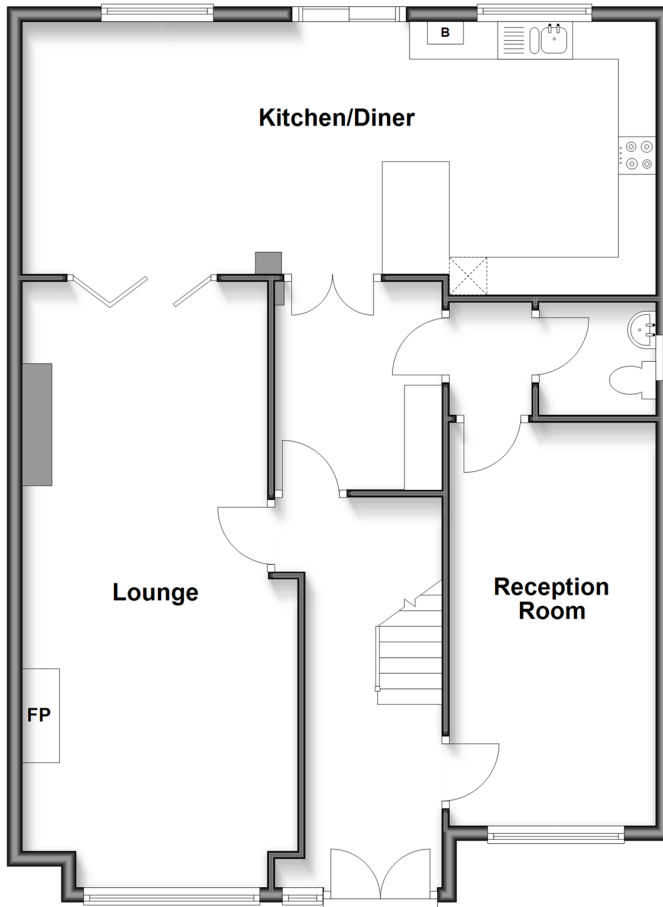
4x  2x  2x 

**Camborne Road,
Welling, Kent, DA16**

Wards
Helping you move forwards

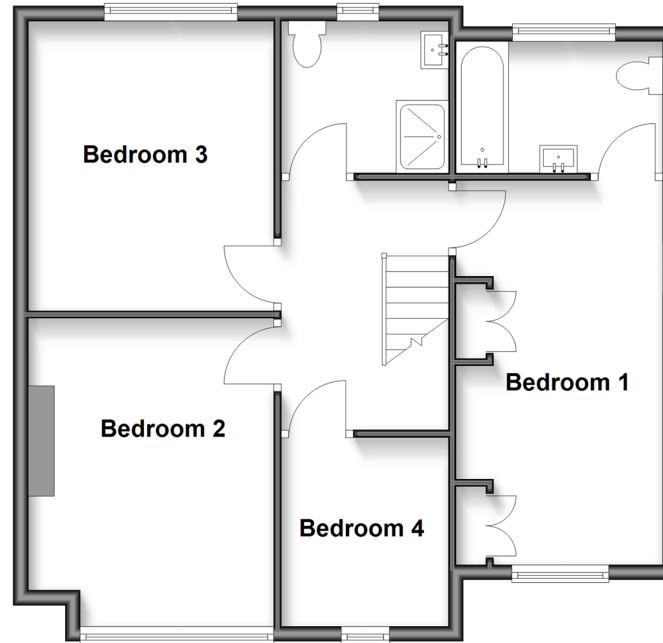
Ground Floor

Approx. 94.2 sq. metres (1014.4 sq. feet)



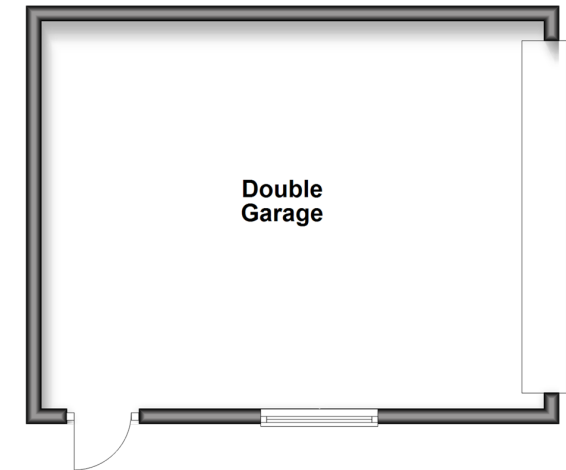
First Floor

Approx. 63.9 sq. metres (688.0 sq. feet)



Outbuilding

Approx. 34.7 sq. metres (373.2 sq. feet)



Accommodation

GROUND FLOOR

Entrance Hall

Lounge: 26'8 x 11'6 (8.13m x 3.51m)

Reception 2: 17'2 x 8'6 (5.24m x 2.59m)

Cloak Room

Utility Room: 9'3 x 6'6 (2.82m x 1.98m)

Kitchen/Diner: 27'3 x 11'1 (8.31m x 3.38m)

Landing

Bedroom 1: 16'2 x 8'8 (4.93m x 2.64m)

En-suite Bathroom

Bedroom 2: 13'3 x 10'3 (4.04m x 3.13m)

Bedroom 3: 12'3 x 10'2 (3.74m x 3.10m)

Bedroom 4: 7'8 x 6'4 (2.34m x 1.93m)

Bathroom

Driveway

Front Garden

Rear Garden

Detached Garage

TOP FLOOR

OUTSIDE



Main features

- Complete chain
- Corner plot
- Side and rear extension
- Off street parking to front and double detached garage to the rear
- Downstairs cloak room, upstairs bathroom and en-suite



Nearest Schools

Primary Schools: East Wickham Junior School 0.3 miles, Eastcote Primary 0.4 miles, St Stephen's Catholic Primary 0.4 miles

Secondary Schools: Harris Academy Falconwood 0.6



Transport Information

Train Stations: Welling 0.3 miles, Falconwood 0.8 miles, Plumstead 1.6 miles

Underground North Greenwich 4.5 miles, Canning Town 4.8 miles, Upney 4.9 miles



Address George V 2.7 miles, Gallions Reach 3.0 miles, Camborne Road, Welling, Kent, DA16



Directions

For directions to this property please contact us.



Wards
Helping you move forwards

Call Welling Branch 020 8301 6679 ■ wardsof Kent.co.uk



- Legal advice should be taken to verify fixtures/fittings, planning, alterations and/or lease details
- Appliances & services are untested, dimensions are approximate and floor plans are not to scale
- Through a Homewise Home For Life Plan people aged 60+ can secure this property for up to 59% less, by purchasing a Lifetime Lease.

EPC RATING

CURRENT: C(69) POTENTIAL: C(79)

15009111/20250607/RL/LK