



**Price**

**£400,000**

**Freehold**

2x  1x  1x 

**Whiting Close, Welling,  
Kent, DA16**

**OVER 60?**

Secure this property  
for up to **59% less!**

*Wards*  
Helping you move forwards





## Main features

- **New build property**
- **Private road**
- **Low maintenance garden**
- **Allocated parking space for one car**
- **Within an easy walk of several bus routes and local shops**

## Accommodation

### GROUND FLOOR

Kitchen/Living Area: (L-shaped) 16'9 x 15'6 (5.11m x 4.73m) plus 13'3 x 13'3 (4.04m x 4.04m)

Bathroom

Bedroom 1: 9'5 x 8'8 (2.87m x 2.64m)

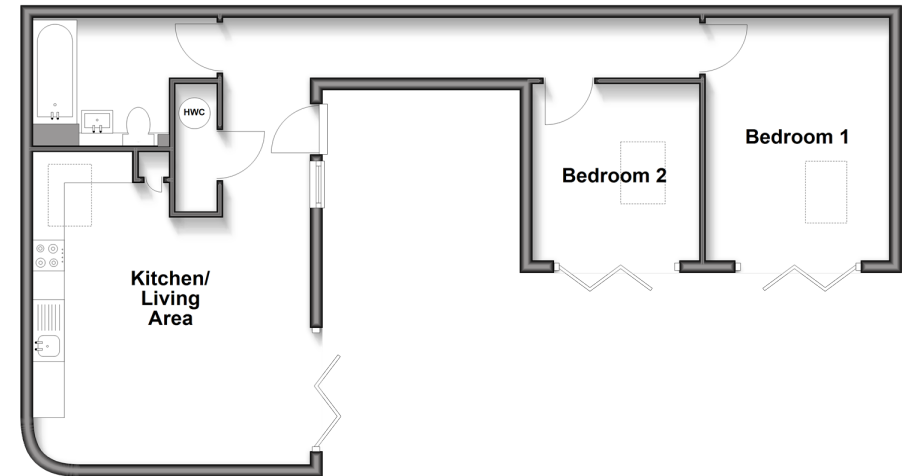
Bedroom 2: 7'5 x 6'2 (2.26m x 1.88m)

### OUTSIDE

Front Garden

Allocated Parking Space

**Ground Floor**  
Approx. 57.8 sq. metres (622.6 sq. feet)



**Call Welling - 020 8301 6679 ■ [wardsofkent.co.uk](http://wardsofkent.co.uk)**

- If buying to let, the energy rating will need to be improved to at least 'E' rating before you can let the property
- Appliances & services are untested, dimensions are approximate and floor plans are not to scale

- Legal advice should be taken to verify fixtures/fittings, planning, alterations and/or lease details
- Through a Homewise Home For Life Plan people aged 60+ can secure this property for up to 50% less, by purchasing a Lifetime Lease.



15009198/20250812/RL/LK