



Price
£700,000

Freehold

4x  3x  2x 

**Selwyn Crescent,
Welling, Kent, DA16**

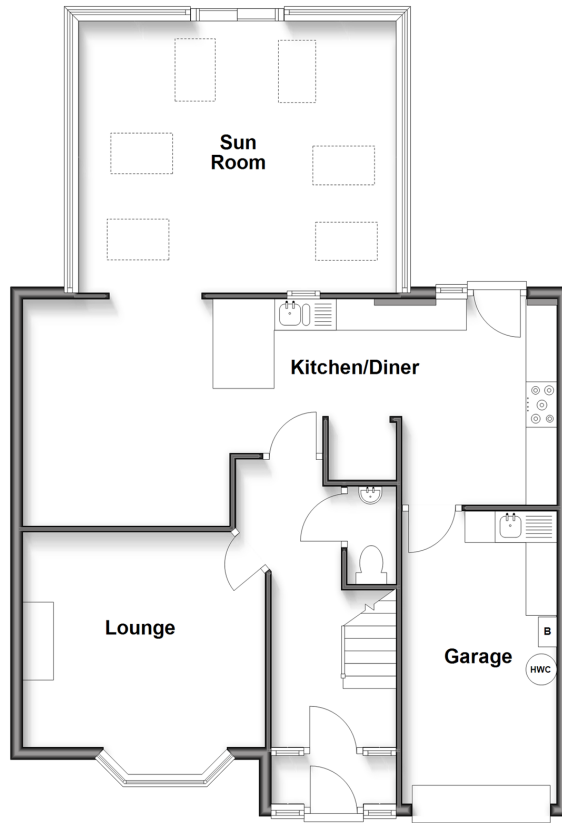
OVER 60?

Secure this property
for up to **59% less!**

Wards
Helping you move forwards

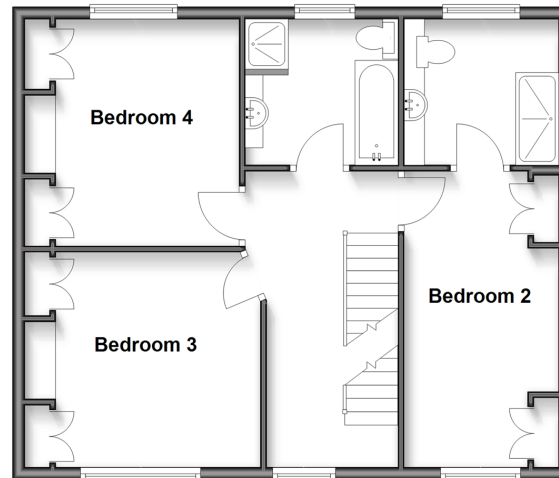
Ground Floor

Approx. 90.8 sq. metres (977.5 sq. feet)



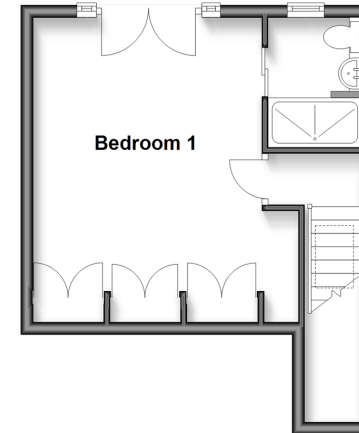
First Floor

Approx. 61.8 sq. metres (665.2 sq. feet)



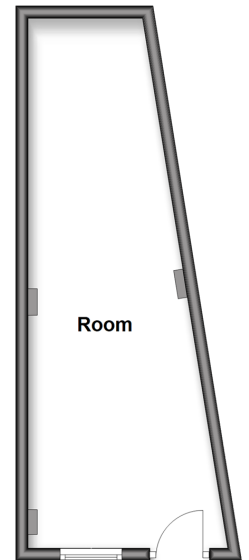
Second Floor

Approx. 27.5 sq. metres (296.0 sq. feet)



Outbuilding

Approx. 21.6 sq. metres (232.7 sq. feet)



Accommodation

GROUND FLOOR

Porch
Entrance Hall
Cloakroom
Lounge: 13'0 x 12'5 (3.97m x 3.79m)
Kitchen/Diner: (L-shaped) 28'1 x 11'7 (8.57m x 3.53m) plus 11'7 x 8'2 (3.53m x 2.49m)
Sun Room: 16'5 x 14'2 (5.01m x 4.32m)

FIRST FLOOR

Landing
Bedroom 2: 15'2 x 8'4 (4.63m x 2.54m)
En-Suite Shower Room
Bedroom 3: 11'6 x 11'0 (3.51m x 3.36m)
Bedroom 4: 11'6 x 9'4 (3.51m x 2.85m)
Bathroom

SECOND FLOOR

Landing
Bedroom 1: 16'7 x 11'8 (5.06m x 3.56m)
En-Suite Shower Room

OUTBUILDING

Out building

OUTSIDE

Front Garden
Rear Garden



Main features

- Chain free
- Family bathroom, two en-suites and a downstairs cloakroom
- Large sun room and outbuilding
- Located in sought after South Welling and close to Danson Park
- Easy walk to several schools, shops and Welling train station



Nearest Schools

Primary Schools: Danson Primary 0.1 miles, Hook Lane Primary 0.2 miles, St Stephen's Catholic Primary 0.3 miles
 Secondary Schools: Bexley Grammar School 0.1 miles, Welling School 0.6 miles, Blackfen School for Girls 0.7 miles



Transport Information

Train Stations: Welling 0.4 miles, Bexleyheath 1.1 miles, Falconwood 1.2 miles



Address

Selwyn Crescent, Welling, Kent, DA16



Directions

For directions to this property please contact us.





Wards
Helping you move forwards

Call Welling Branch 020 8301 6679 ■ wardsofkent.co.uk



- Legal advice should be taken to verify fixtures/fittings, planning, alterations and/or lease details
- Appliances & services are untested, dimensions are approximate and floor plans are not to scale
- Through a Homewise Home For Life Plan people aged 60+ can secure this property for up to 59% less, by purchasing a Lifetime Lease.



15000186/20250510/RL/LK