



Price
£475,000

Freehold

3x  1x  1x 

**Rippersley Road,
Welling, Kent, DA16**

OVER 60?

Secure this property
for up to **59% less!**

Wards
Helping you move forwards



Main features

- Chain free
- Conservatory and well maintained rear garden
- Extended kitchen
- Walking distance to East Wickham open space
- Potential to extend subject to planning permission

Accommodation

GROUND FLOOR

Entrance Porch
 Entrance Hall
 Lounge/Dining Area: 27'1 x 10'1 (8.26m x 3.08m)
 Kitchen: 15'1 x 8'0 (4.60m x 2.44m)
 Conservatory

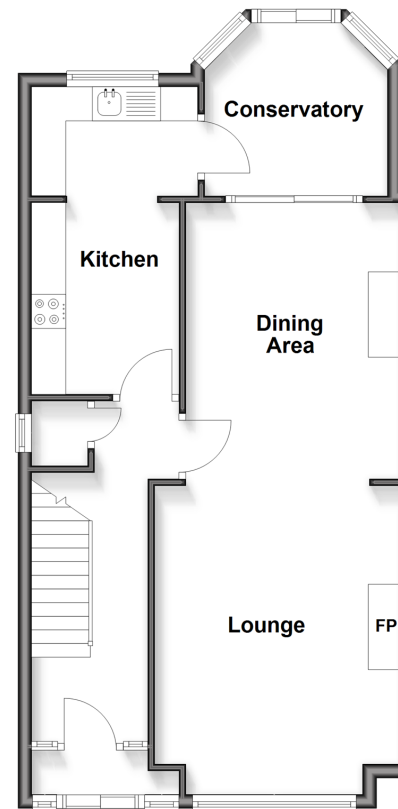
FIRST FLOOR

Landing
 Bedroom 1: 13'1 x 8'2 (3.99m x 2.49m)
 Bedroom 2: 11'9 x 9'9 (3.58m x 2.97m)
 Bedroom 3: 8'1 x 6'0 (2.47m x 1.83m)
 Shower Room

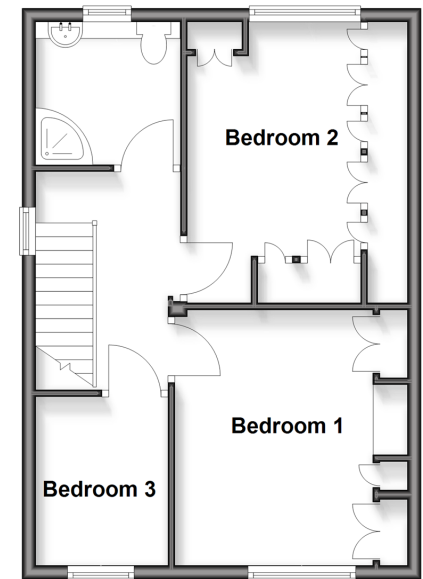
OUTSIDE

Front Garden
 Rear Garden

Ground Floor
 Approx. 57.8 sq. metres (621.8 sq. feet)



First Floor
 Approx. 43.4 sq. metres (466.7 sq. feet)



Call Welling - 020 8301 6679 ■ wardsofkent.co.uk

- Legal advice should be taken to verify fixtures/fittings, planning, alterations and/or lease details
- Appliances & services are untested, dimensions are approximate and floor plans are not to scale
- Through a Homewise Home For Life Plan people aged 60+ can secure this property for up to 59% less, by purchasing a Lifetime Lease.



15009140/20250227/RL/LK