



Price
£625,000

Freehold

4x  2x  1x 

**Saltash Road, Welling,
Kent, DA16**

OVER 60?

Secure this property
for up to **59% less!**

Wards
Helping you move forwards



Main features

- Extended to the side and rear
- Under floor heating in the kitchen
- Downstairs cloakroom, family bathroom and en-suite shower room
- Utility room
- Close to several schools and in the catchment area for Bexley Grammar School

Accommodation

GROUND FLOOR

Entrance Hall

Lounge: 19'9 x 16'7 (6.02m x 5.06m)

Kitchen/Diner: (L-shaped) 24'1 x 12'0 (7.35m x 3.66m) plus 10'5 x 10'5 (3.18m x 3.18m)

Cloakroom

Former Garage (Utility Room): 16'0 x 8'6 (4.88m x 2.59m)

FIRST FLOOR

Landing

Bedroom 1: 10'2 x 9'6 up to fitted wardrobes (3.10m x 2.90m)

En-suite Shower Room

Bedroom 2: 13'3 x 9'5 up to fitted wardrobes (4.04m x 2.87m)

Bedroom 3: 10'9 x 8'9 (3.28m x 2.67m)

Bedroom 4: 8'1 x 6'1 (2.47m x 1.86m)

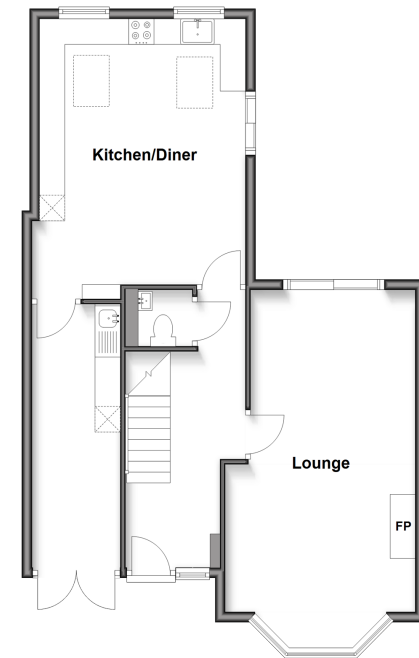
Bathroom

OUTSIDE

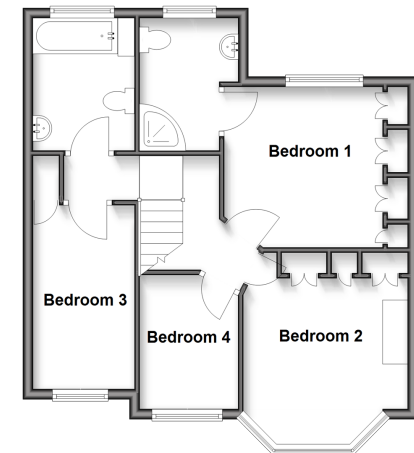
Driveway

Rear Garden

Ground Floor
Approx. 66.5 sq. metres (715.7 sq. feet)



First Floor
Approx. 51.7 sq. metres (557.0 sq. feet)



Call Welling - 020 8301 6679 ■ wardsofkent.co.uk

- Legal advice should be taken to verify fixtures/fittings, planning, alterations and/or lease details
- Appliances & services are untested, dimensions are approximate and floor plans are not to scale
- Through a Homewise Home For Life Plan people aged 60+ can secure this property for up to 59% less, by purchasing a Lifetime Lease.



15009139/20250222/RL/LK