



Price
£500,000

Freehold

2x  2x  2x 

**Foxglove Close, Sidcup,
Kent, DA15**

OVER 60?

Secure this property
for up to **59% less!**

Wards
Helping you move forwards



Main features

- Family bathroom, en suite and downstairs cloakroom
- Beautifully decorated throughout
- 3 allocated parking spaces
- Smart lighting, heating and blinds
- Centrally located to transport links and local schools

Accommodation

GROUND FLOOR

Hallway

Cloakroom

Lounge/Kitchen/Diner: 27'3 at widest point x 14'3 at widest point (8.31m x 4.35m)

Conservatory

FIRST FLOOR

Landing

Bedroom 1: 12'5 x 12'5 (3.79m x 3.79m)

En Suite Shower Room

Bedroom 2: 9'3 x 8'0 (2.82m x 2.44m)

Bathroom

OUTSIDE

Side Garden

Rear Garden

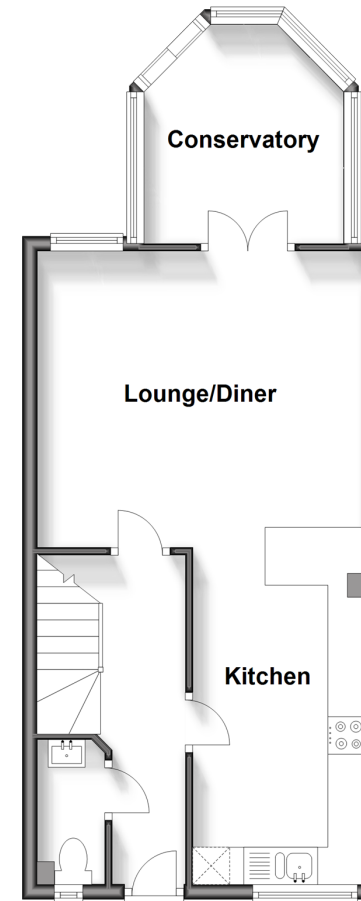
Allocated Parking Space x3

Call Welling - 020 8301 6679 ■ wardsofkent.co.uk

- Legal advice should be taken to verify fixtures/fittings, planning, alterations and/or lease details
- Appliances & services are untested, dimensions are approximate and floor plans are not to scale
- Through a Homewise Home For Life Plan people aged 60+ can secure this property for up to 59% less, by purchasing a Lifetime Lease.

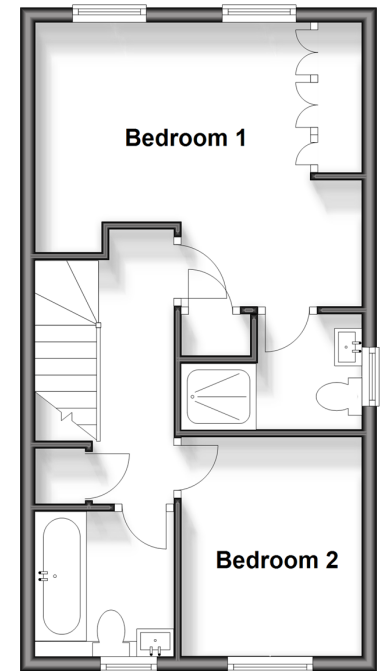
Ground Floor

Approx. 44.8 sq. metres (482.1 sq. feet)



First Floor

Approx. 37.4 sq. metres (402.9 sq. feet)



15009107/20250127/RL/LK