



**OVER 60?**

Secure this property  
for up to **59% less!**

**Price**

**£500,000**

**Freehold**

4x  2x  2x 

**Wickham Street,  
Welling, Kent, DA16**

*Wards*  
Helping you move forwards



## Main features

- Recently refurbished and ready to move into
- Walking distance to Welling train station
- Summerhouse that can be used as an office with power
- Family bathroom, ensuite and a downstairs WC
- Walking distance to several schools

## Accommodation

### GROUND FLOOR

Hallway

Lounge/Diner: 27'2 x 10'2 (8.29m x 3.10m)

WC

Kitchen: 28'8 x 7'7 (8.74m x 2.31m)

### FIRST FLOOR

Landing

Bathroom

Bedroom 1: 15'4 x 7'6 (4.68m x 2.29m)

En Suite Shower Room

Bedroom 2: 10'7 x 5'7 (3.23m x 1.70m)

Bedroom 3: 9'1 x 6'7 (2.77m x 2.01m)

Bedroom 4: 8'2 x 4'8 (2.49m x 1.42m)

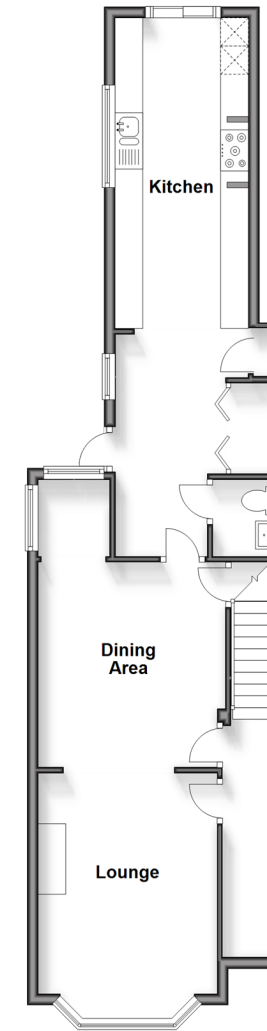
### OUTSIDE

Front Garden

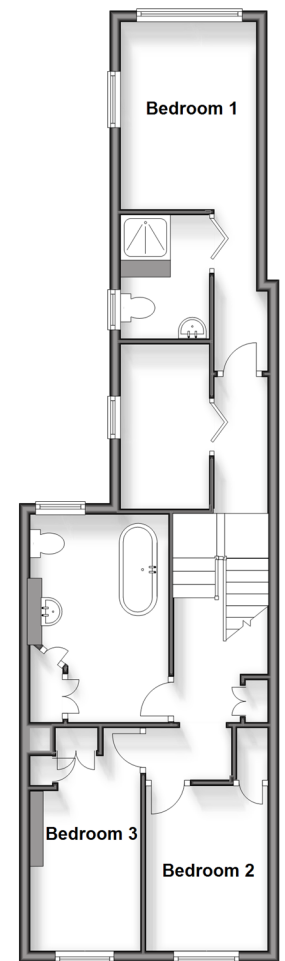
Rear Garden

Out building

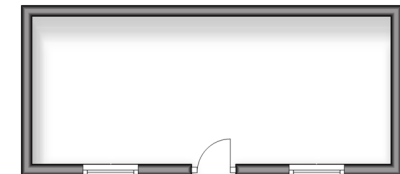
**Ground Floor**  
Approx. 59.9 sq. metres (645.0 sq. feet)



**First Floor**  
Approx. 55.5 sq. metres (597.5 sq. feet)



**Outbuilding**  
Approx. 17.0 sq. metres (183.1 sq. feet)



**Call Welling - 020 8301 6679 ■ [wardsofkent.co.uk](http://wardsofkent.co.uk)**

- Legal advice should be taken to verify fixtures/fittings, planning, alterations and/or lease details
- Appliances & services are untested, dimensions are approximate and floor plans are not to scale
- Through a Homewise Home For Life Plan people aged 60+ can secure this property for up to 59% less, by purchasing a Lifetime Lease.



15009109/20250127/RL/LK