



Price
£375,000

Freehold

3x  1x  1x 

**Wordsworth Road,
Welling, Kent, DA16**

OVER 60?

Secure this property
for up to **59% less!**

Wards
Helping you move forwards



Main features

- Close to public transport links and schools
- Potential to extend subject to planning permission
- Chain free
- Popular poets estate
- Garage to rear

Accommodation

GROUND FLOOR

Entrance Porch

Kitchen: 10'0 x 6'2 (3.05m x 1.88m)

Lounge: 14'1 x 13'3 (4.30m x 4.04m)

Diner: 9'8 x 7'3 (2.95m x 2.21m)

TOP FLOOR

Landing

Bathroom

Bedroom 1: 13'5 x 7'9 (4.09m x 2.36m)

Bedroom 2: 9'1 x 7'9 (2.77m x 2.36m)

Bedroom 3: 7'6 x 5'5 (2.29m x 1.65m)

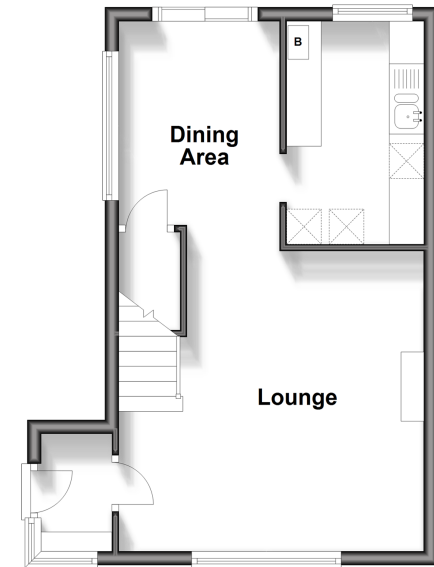
OUTSIDE

Front Garden

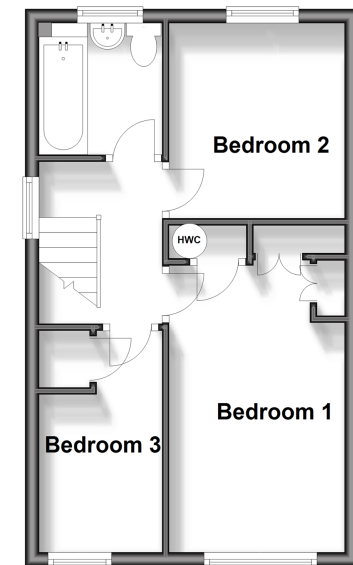
Rear Garden

Garage en block

Ground Floor
Approx. 35.1 sq. metres (378.3 sq. feet)



First Floor
Approx. 33.3 sq. metres (358.2 sq. feet)



Call Welling - 020 8301 6679 ■ wardsofkent.co.uk

- Legal advice should be taken to verify fixtures/fittings, planning, alterations and/or lease details
- Appliances & services are untested, dimensions are approximate and floor plans are not to scale
- Through a Homewise Home For Life Plan people aged 60+ can secure this property for up to 59% less, by purchasing a Lifetime Lease.



15009057/20241021/RL/GM