



**OVER 60?**

Secure this property  
for up to **59% less!**

**Price**

**£210,000**

**Leasehold**

1x  1x  1x 

**Pengarth Road, Bexley,  
Kent, DA5**

*Wards*  
Helping you move forwards



## Main features

- Located in a quiet road in sought after Bexley
- Modern kitchen and bathroom
- Large bedroom and lounge
- Walking distance to several bus routes
- Allocated parking

## Accommodation

### FIRST FLOOR

Hallway

Kitchen: 8'4 x 8'1 (2.54m x 2.47m)

Bedroom : 11'8 x 11'0 (3.56m x 3.36m)

Lounge/Dining room: 13'1 x 10'6 (3.99m x 3.20m)

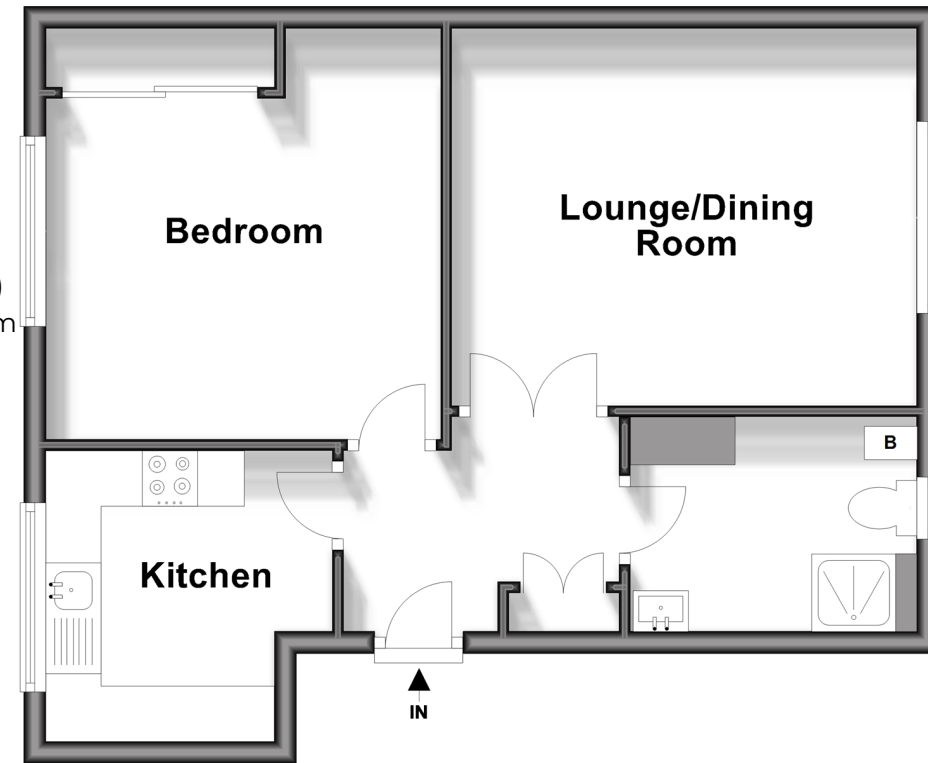
Shower Room

### OUTSIDE

Rear Garden

## First Floor

Approx. 45.0 sq. metres (483.9 sq. feet)



**Call Welling - 020 8301 6679 ■ [wardsofkent.co.uk](http://wardsofkent.co.uk)**

- Legal advice should be taken to verify fixtures/fittings, planning, alterations and/or lease details
- Appliances & services are untested, dimensions are approximate and floor plans are not to scale
- Through a Homewise Home For Life Plan people aged 60+ can secure this property for up to 59% less, by purchasing a Lifetime Lease.



15008973/20240723/SK/LK