



Price
£500,000

Freehold

3x  1x  2x 

**Willersley Avenue,
Sidcup, Kent, DA15**

OVER 60?

Secure this property
for up to **59% less!**

Wards
Helping you move forwards



Main features

- Great size garden
- Parking for 1 car
- Separate lounge and dining area
- Potential to extend subject to planning permission
- Walking distance to several schools and outdoor spaces

Accommodation

GROUND FLOOR

Hallway
 Dining Area: 10'3 x 8'8 (3.13m x 2.64m)
 Lounge: 14'0 x 11'6 (4.27m x 3.51m)
 Kitchen: 7'0 x 6'8 (2.14m x 2.03m)

FIRST FLOOR

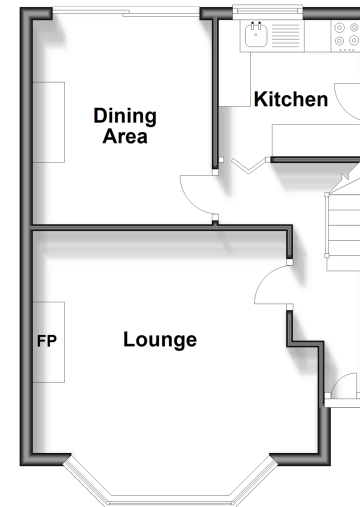
Landing
 Bedroom 2: 10'0 x 6'9 (3.05m x 2.06m)
 Bedroom 1: 13'7 x 10'3 (4.14m x 3.13m)
 Bedroom 3: 6'7 x 6'0 (2.01m x 1.83m)
 Shower Room

OUTSIDE

Driveway
 Rear Garden

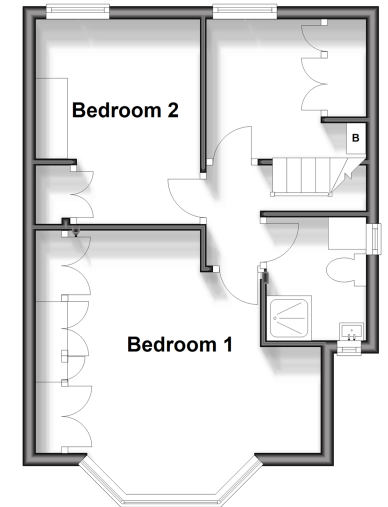
Ground Floor

Approx. 34.7 sq. metres (373.1 sq. feet)



First Floor

Approx. 34.1 sq. metres (367.4 sq. feet)



Call Welling - 020 8301 6679 ■ wardsof Kent.co.uk

- If buying to let, the energy rating will need to be improved to at least 'E' rating before you can let the property
- Legal advice should be taken to verify fixtures/fittings, planning, alterations and/or lease details
- Appliances & services are untested, dimensions are approximate and floor plans are not to scale
- Through a Homewise Home For Life Plan people aged 60+ can secure this property for up to 59% less, by purchasing a Lifetime Lease.



15008920/20240622/LM/LK