



Price
£585,000

Freehold

5x  2x  2x 

**Raeburn Road, Sidcup,
Kent, DA15**

OVER 60?

Secure this property
for up to **59% less!**

Wards
Helping you move forwards



Main features

- **Extended family home**
- **Separate lounge and dining area**
- **Upstairs bathroom and En-suite shower room downstairs**
- **Short walk to Days Lane primary school**
- **Close to local bus routes**

Accommodation

GROUND FLOOR

Porch
Hallway
Bedroom 1 with en-suite shower: 11'2 x 6'0 (3.41m x 1.83m)
Lounge: 11'7 x 11'6 (3.53m x 3.51m)
Dining Area: 11'6 x 10'7 (3.51m x 3.23m)
Kitchen: 13'2 x 7'8 (4.02m x 2.34m)

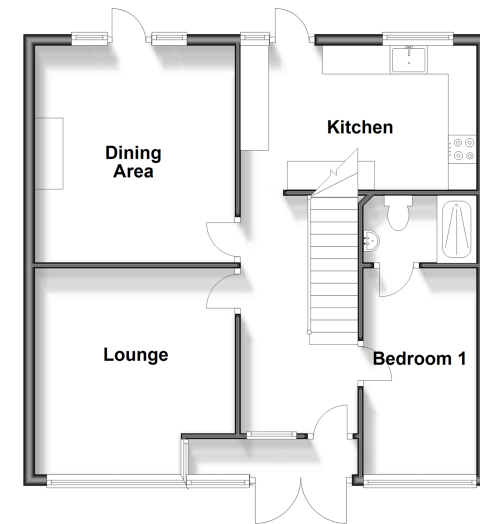
FIRST FLOOR

Landing
Bedroom 2: 15'7 x 6'5 (4.75m x 1.96m)
Bedroom 3: 13'1 x 8'2 (3.99m x 2.49m)
Bedroom 4: 12'1 x 9'3 (3.69m x 2.82m)
Bedroom 5: 9'4 x 9'3 (2.85m x 2.82m)
Bathroom

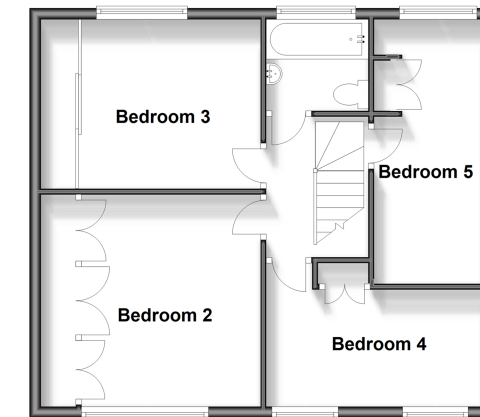
OUTSIDE

Driveway
Rear Garden

Ground Floor
Approx. 57.8 sq. metres (621.8 sq. feet)



First Floor
Approx. 53.1 sq. metres (571.3 sq. feet)



Call Welling - 020 8301 6679 ■ wardsofkent.co.uk

- If buying to let, the energy rating will need to be improved to at least 'E' rating before you can let the property
- Legal advice should be taken to verify fixtures/fittings, planning, alterations and/or lease details
- Appliances & services are untested, dimensions are approximate and floor plans are not to scale
- Through a Homewise Home For Life Plan people aged 60+ can secure this property for up to 59% less, by purchasing a Lifetime Lease.



15008911/20250127/RL/LK