



Price

£500,000

Freehold

3x  1x  1x 

**Whiting Close, Welling,
Kent, DA16**

Wards
Helping you move forwards



Main features

- Brand new modern 3 bed detached house
- Parking for 1 car
- Open plan kitchen/living room
- Good sized rear garden
- Easy access to local bus routes, local schools and shops

Accommodation

GROUND FLOOR

Hallway
 Kitchen/Lounge: 27'0 x 14'3 at widest point (8.24m x 4.35m)
 Cloakroom
 Bedroom 3: 9'0 x 8'0 (2.75m x 2.44m)

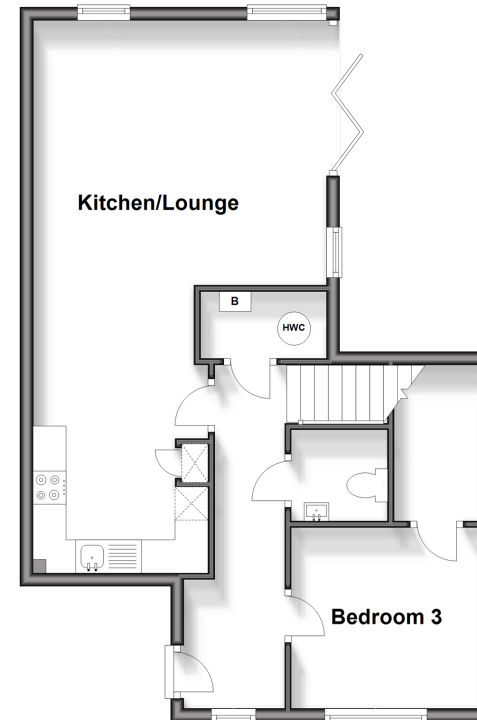
FIRST FLOOR

Landing
 Bedroom 1: 14'7 x 9'5 at widest point (4.45m x 2.87m)
 Bedroom 2: 14'0 x 9'0 (4.27m x 2.75m)
 Bathroom

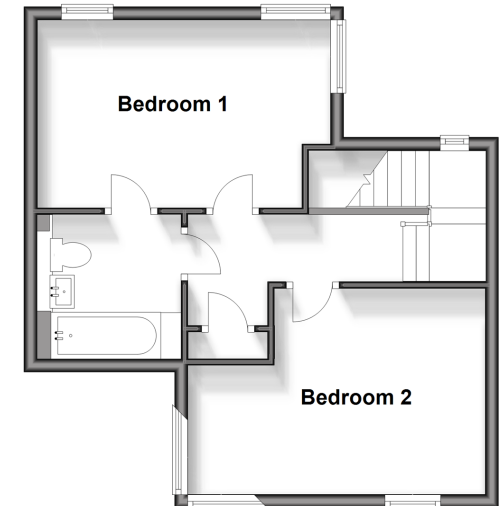
OUTSIDE

Rear Garden
 Driveway

Ground Floor
 Approx. 53.6 sq. metres (577.1 sq. feet)



First Floor
 Approx. 39.3 sq. metres (422.7 sq. feet)



Call Welling - 020 8301 6679 ■ wardsofkent.co.uk

■ Legal advice should be taken to verify fixtures/fittings, planning, alterations and/or lease details

■ Appliances & services are untested, dimensions are approximate and floor plans are not to scale



15008765/20240525/JJ/LK