



Price
£575,000

Freehold

4x  2x  3x 

**Ashmore Grove,
Welling, Kent, DA16**

OVER 60?

Secure this property
for up to **59% less!**

Wards
Helping you move forwards



Main features

- Large extended 4 bedroom semi-detached house
- Family bathroom and shower room
- Sought after location
- Outbuilding which could be used as an office
- Close to local shops and schools

Accommodation

GROUND FLOOR

Hallway
 Lounge : 19'5 x 16'2 (5.92m x 4.93m)
 Dining Room: 13'2 x 11'6 (4.02m x 3.51m)
 Shower Room
 Office : 7'5 x 7'3 (2.26m x 2.21m)
 Kitchen: 10'1 x 7'4 (3.08m x 2.24m)
 Garden Room

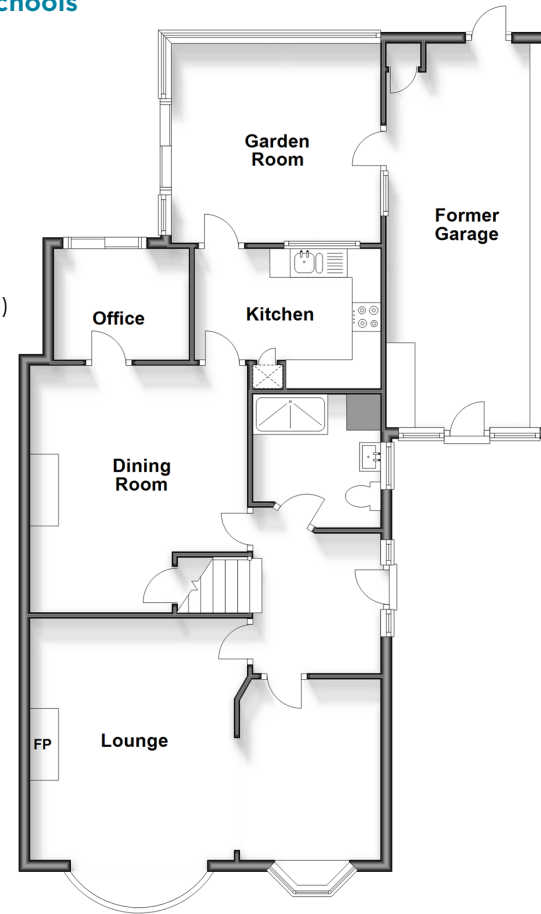
FIRST FLOOR

Landing
 Bedroom 1: 17'0 x 11'6 (5.19m x 3.51m)
 Bedroom 2: 12'9 x 11'7 (3.89m x 3.53m)
 Bedroom 3: 11'5 x 7'4 (3.48m x 2.24m)
 Bedroom 4: 9'7 x 8'4 (2.92m x 2.54m)
 Bathroom

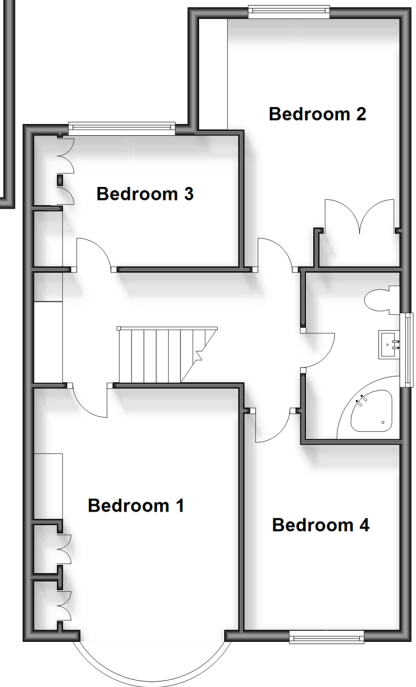
OUTSIDE

Former Garage
 Rear Garden
 Driveway
 Outbuilding

Ground Floor
 Approx. 97.8 sq. metres (1052.4 sq. feet)



First Floor
 Approx. 62.7 sq. metres (674.7 sq. feet)



Call Welling - 020 8301 6679 ■ wardsofkent.co.uk

- Legal advice should be taken to verify fixtures/fittings, planning, alterations and/or lease details
- Appliances & services are untested, dimensions are approximate and floor plans are not to scale
- Through a Homewise Home For Life Plan people aged 60+ can secure this property for up to 59% less, by purchasing a Lifetime Lease.



15008902/20240518/JJ/LK