



Price
£600,000

Freehold

5x  2x  2x 

**Burnell Avenue, Welling,
Kent, DA16**

OVER 60?

Secure this property
for up to **59% less!**

Wards
Helping you move forwards



Main features

- Large extended 5 bedroom semi-detached home
- Downstairs shower room and upstairs bathroom
- Ample living space
- Large garden
- Walking distance to local amenities

Accommodation

GROUND FLOOR

Entrance Hallway
 Family Area: 10'1 x 9'8 (3.08m x 2.95m)
 Lounge: 14'0 x 9'5 (4.27m x 2.87m)
 Kitchen/Dining Area: 21'7 x 9'9 (6.58m x 2.97m)
 Utility Room: 9'1 x 4'3 (2.77m x 1.30m)
 Shower Room

FIRST FLOOR

Landing
 Bedroom 1: 14'5 x 8'8 (4.40m x 2.64m)
 Bedroom 2: 11'0 x 7'1 (3.36m x 2.16m)
 Bedroom 3: 11'4 x 7'6 (3.46m x 2.29m)
 Bedroom 4 : 11'2 x 6'8 (3.41m x 2.03m)
 Bedroom 5: 10'8 x 10'6 (3.25m x 3.20m)
 Bathroom

OUTSIDE

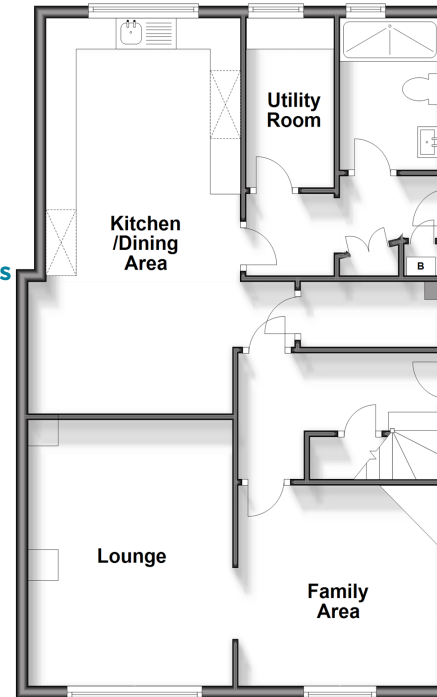
Rear Garden
 Driveway
 Outbuilding

Call Welling - 020 8301 6679 ■ wardsofkent.co.uk

- Legal advice should be taken to verify fixtures/fittings, planning, alterations and/or lease details
- Appliances & services are untested, dimensions are approximate and floor plans are not to scale
- Through a Homewise Home For Life Plan people aged 60+ can secure this property for up to 59% less, by purchasing a Lifetime Lease.

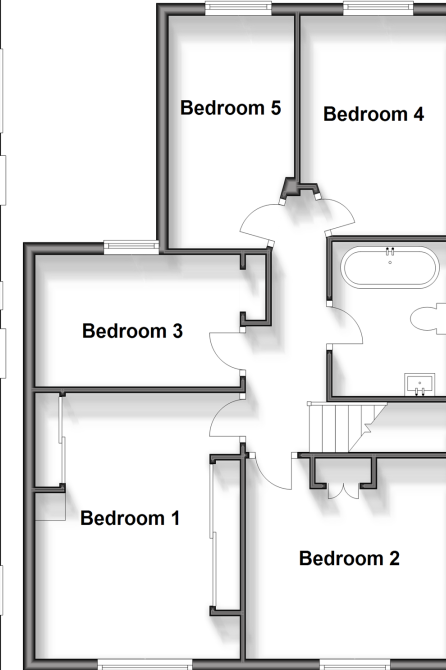
Ground Floor

Approx. 72.6 sq. metres (781.5 sq. feet)



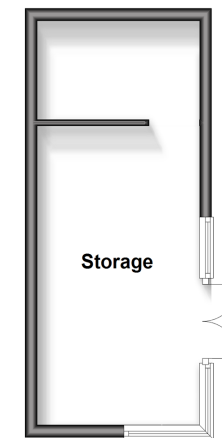
First Floor

Approx. 62.7 sq. metres (674.4 sq. feet)



Outbuilding

Approx. 17.6 sq. metres (189.8 sq. feet)



15008895/20240420/JJ/LK