



Price
£575,000

Freehold

4x  3x  2x 

**Westwood Lane,
Welling, Kent, DA16**

OVER 60?

Secure this property
for up to **59% less!**

Wards
Helping you move forwards



Main features

- Large extended 4 bed semi-detached house
- 3 bathrooms and utility room
- Easy walking distance to Welling Train Station and High Street
- Perfect location for schools
- Sunny aspect garden

Accommodation

GROUND FLOOR

- Porch
- Hallway
- Lounge: 14'4 x 13'2 (4.37m x 4.02m)
- Dining Area: 18'2 x 12'8 (5.54m x 3.86m)
- Family Area: 11'8 x 7'6 (3.56m x 2.29m)
- Kitchen: 12'3 x 8'2 (3.74m x 2.49m)
- Utility Room: 5'2 x 4'6 (1.58m x 1.37m)
- Shower Room
- Store Room

FIRST FLOOR

- Landing
- Bedroom 1: 14'3 x 12'4 (4.35m x 3.76m)
- Bedroom 2: 11'3 x 10'4 (3.43m x 3.15m)
- Bedroom 3: 7'1 x 6'3 (2.16m x 1.91m)
- Bathroom : 8'2 x 6'3 (2.49m x 1.91m)

SECOND FLOOR

- Landing
- Loft Room with en-suite

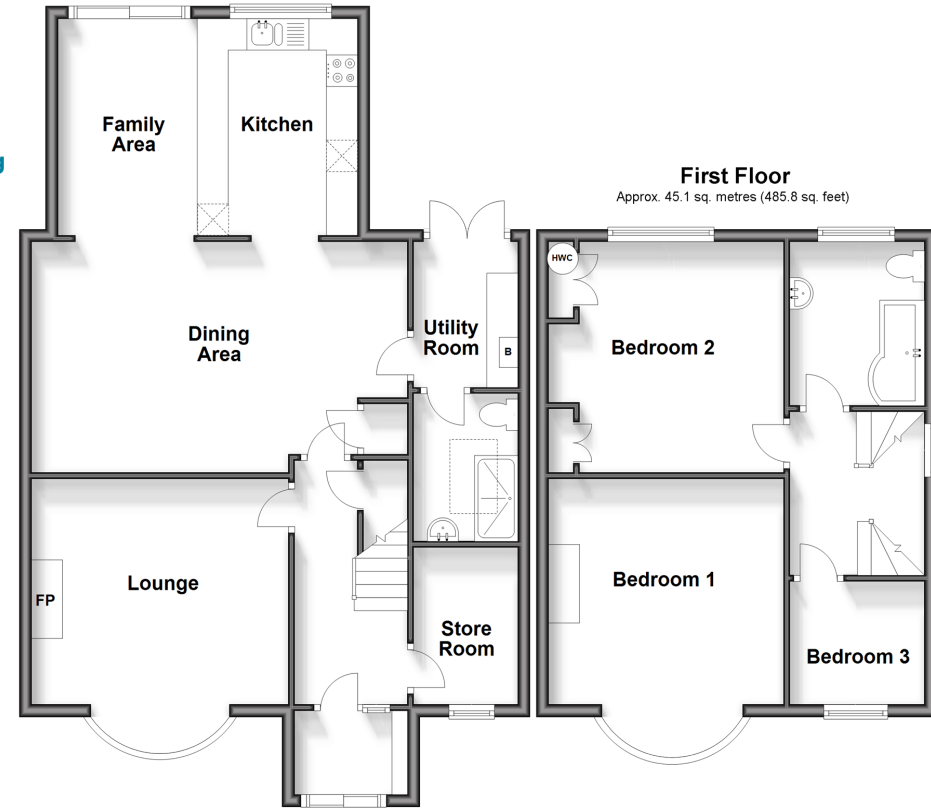
OUTSIDE

- Driveway
- Rear Garden

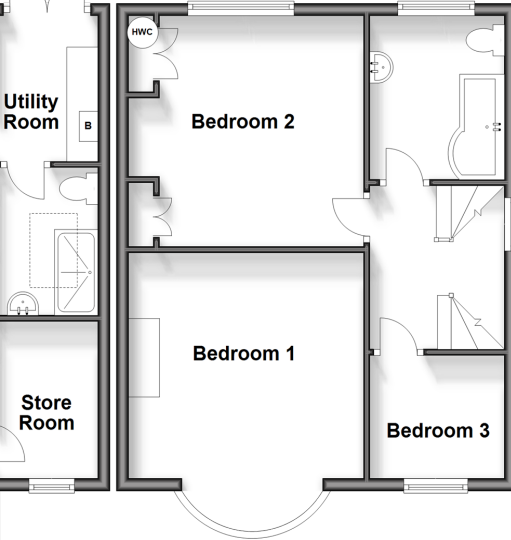
Call Welling - 020 8301 6679 ■ wardsofkent.co.uk

- Legal advice should be taken to verify fixtures/fittings, planning, alterations and/or lease details
- Appliances & services are untested, dimensions are approximate and floor plans are not to scale
- Through a Homewise Home For Life Plan people aged 60+ can secure this property for up to 59% less, by purchasing a Lifetime Lease.

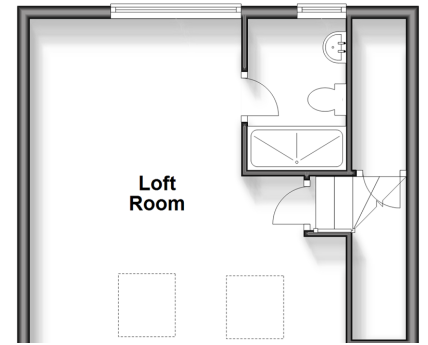
Ground Floor
Approx. 78.0 sq. metres (839.2 sq. feet)



First Floor
Approx. 45.1 sq. metres (485.8 sq. feet)



Second Floor
Approx. 33.7 sq. metres (362.3 sq. feet)



EPC RATING
CURRENT: D(61) POTENTIAL: C(80)



15008873/20240417/LK/LK