



Price
£665,000

Freehold

5x  1x  1x 

**Blackfen Road, Sidcup,
Kent, DA15**

OVER 60?

Secure this property
for up to **59% less!**

Wards
Helping you move forwards



Main features

- Spacious detached chalet bungalow on corner plot
- Gated driveway alongside drop curb to rear garden
- Large living space, ideal for entertaining
- Walking distance to all amenities
- Option to extend subject to planning permission

Accommodation

GROUND FLOOR

- Porch
- Hallway
- Bedroom 5: 10'1 x 8'4 (3.08m x 2.54m)
- Bathroom
- Kitchen: 20'2 x 11'1 (6.15m x 3.38m)
- Conservatory Area: 13'4 x 11'3 (4.07m x 3.43m)
- Lounge: 20'0 x 13'6 (6.10m x 4.12m)
- Bedroom 4: 9'7 x 8'8 (2.92m x 2.64m)
- Bedroom 1: 19'1 x 12'8 (5.82m x 3.86m)

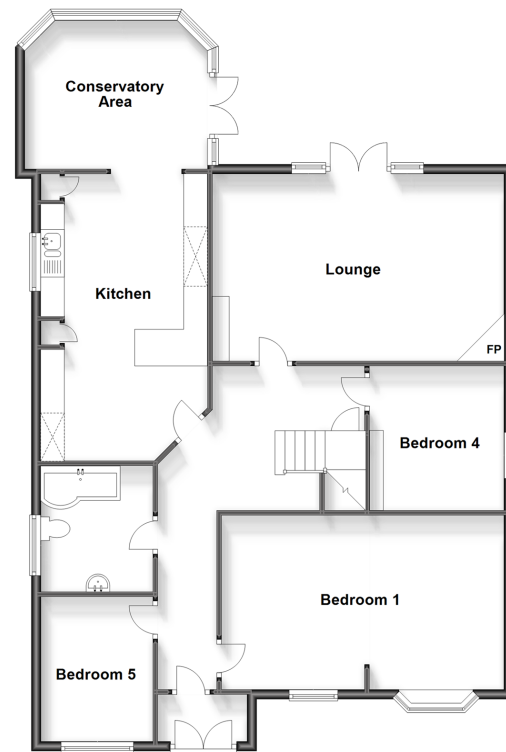
FIRST FLOOR

- Landing
- Bedroom 2: 16'5 x 11'9 (5.01m x 3.58m)
- Bedroom 3: 12'1 x 11'9 (3.69m x 3.58m)

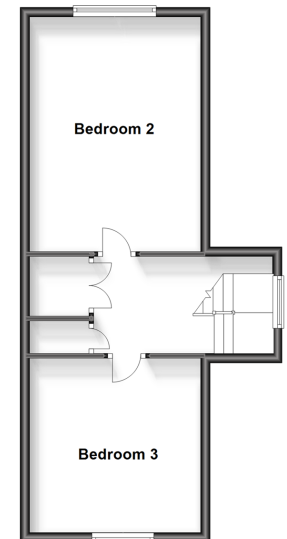
OUTSIDE

- Driveway
- Rear Garden

Ground Floor
Approx. 123.2 sq. metres (1326.3 sq. feet)



First Floor
Approx. 42.4 sq. metres (456.4 sq. feet)



Call Welling - 020 8301 6679 ■ wardsof Kent.co.uk

■ Legal advice should be taken to verify fixtures/fittings, planning, alterations and/or lease details
 ■ Through a Homewise Home For Life Plan people aged 60+ can secure this property for up to 59% less, by purchasing a Lifetime Lease.

■ Appliances & services are untested, dimensions are approximate and floor plans are not to scale



15008850/20240402/SK/LK