



Price
£625,000

Freehold

4x  3x  1x 

**Cumberland Avenue,
Welling, Kent, DA16**

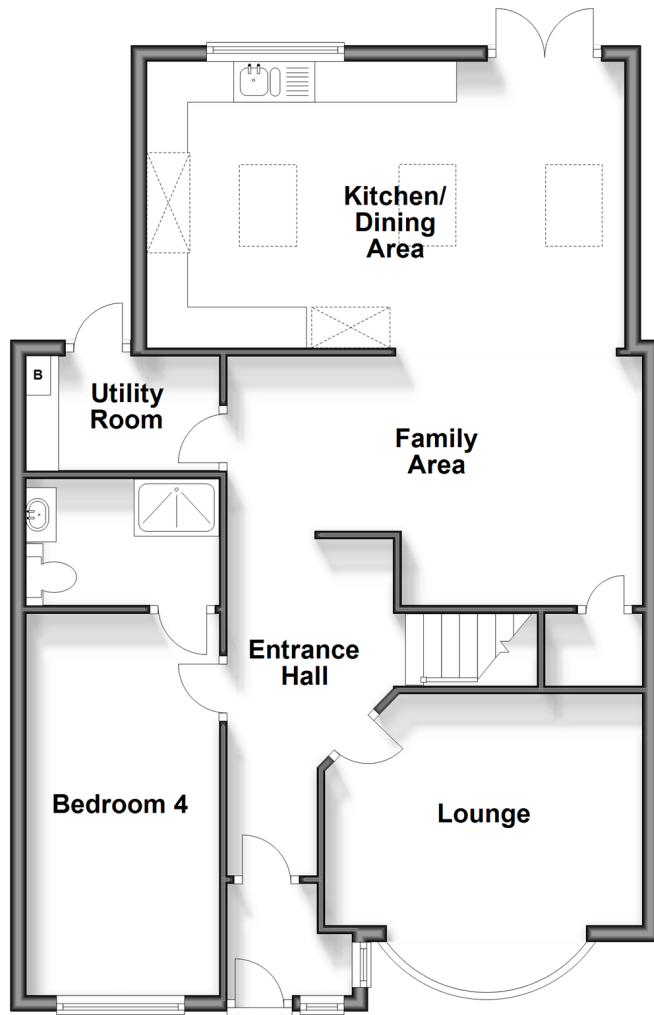
OVER 60?

Secure this property
for up to **59% less!**

Wards
Helping you move forwards

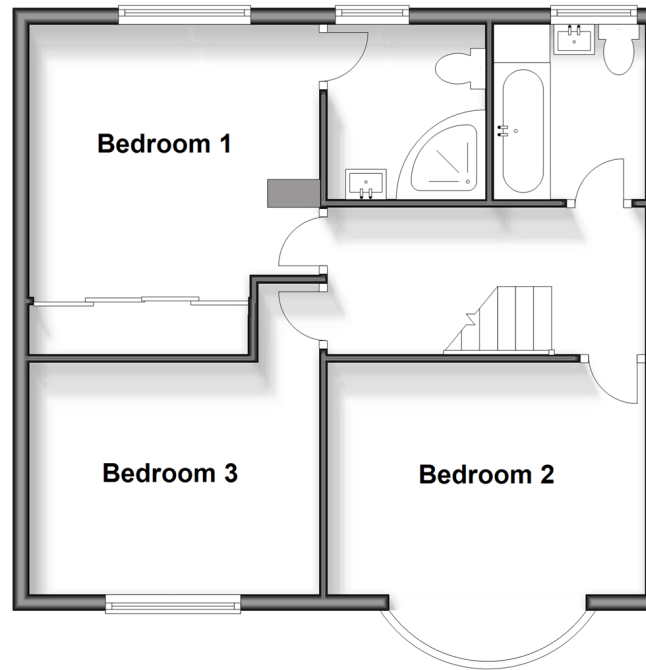
Ground Floor

Approx. 78.3 sq. metres (842.5 sq. feet)



First Floor

Approx. 53.6 sq. metres (576.6 sq. feet)



Accommodation

GROUND FLOOR

Entrance Porch

Hallway

Lounge: 12'7 x 12'2 (3.84m x 3.71m)

Kitchen/Dining Area: 20'8 x 11'4 (6.30m x 3.46m)

Family Area

Utility Room: 7'1 x 4'1 (2.16m x 1.25m)

Bedroom 4: 14'9 x 7'3 (4.50m x 2.21m)

En suite to Bedroom 4

FIRST FLOOR

Landing

Bedroom 1: 12'5 x 12'2 (3.79m x 3.71m)

En suite

Bedroom 2: 12'4 x 10'6 (3.76m x 3.20m)

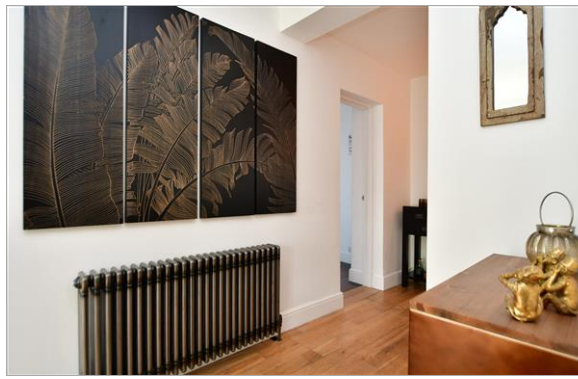
Bedroom 3: 12'1 x 7'2 (3.69m x 2.19m)

Bathroom

OUTSIDE

Driveway

Rear Garden



Main features

- Stunning, immaculate property finished to a high standard
- Garage converted to a bedroom with en suite
- Plenty of downstairs living space
- Highly sought after area
- Great sized garden
- Walking distance to Falconwood train station
- Situated close to local schools , transport links and high street



Nearest Schools

Primary Schools: Bishop Ridley C of E V A Primary 0.2 miles, Eastcote Primary 0.4 miles, St Stephen's Catholic Primary 0.5 miles

Secondary Schools: Harris Academy Falconwood 0.2



Transport Information

Train Stations: Falconwood 0.5 miles, Welling 0.5 miles, Eltham 1.7 miles



Address

Cumberland Avenue, Welling, Kent, DA16



Directions

For directions to this property please contact us.



Wards
Helping you move forwards

Call Welling Branch 020 8301 6679 ■ wardsof Kent.co.uk



- Legal advice should be taken to verify fixtures/fittings, planning, alterations and/or lease details
- Appliances & services are untested, dimensions are approximate and floor plans are not to scale
- Through a Homewise Home For Life Plan people aged 60+ can secure this property for up to 59% less, by purchasing a Lifetime Lease.



15008810/20240530/LK/LK