



Price
£525,000

Freehold

4x  1x  1x 

**Brent Road, London,
SE18**

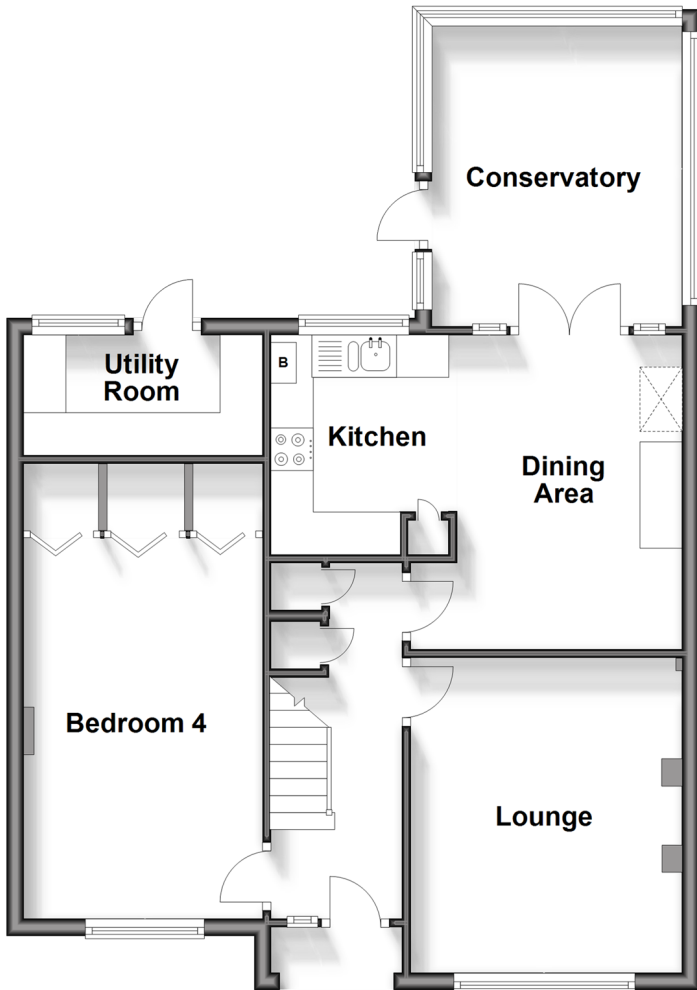
OVER 60?

Secure this property
for up to **59% less!**

Wards
Helping you move forwards

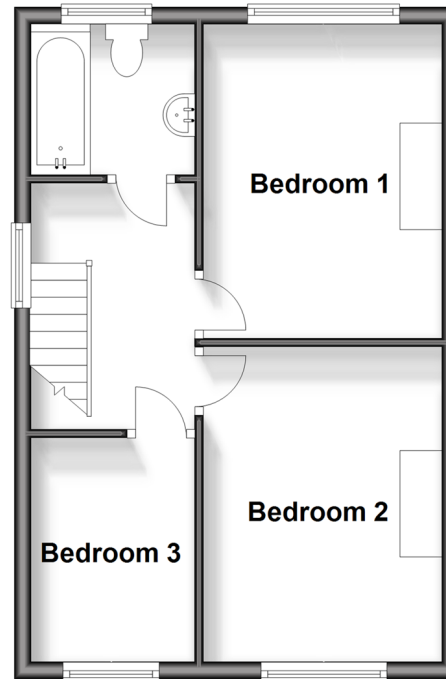
Split Level Ground Floor

Approx. 66.1 sq. metres (711.8 sq. feet)



First Floor

Approx. 36.4 sq. metres (392.0 sq. feet)



Accommodation

SPLIT LEVEL GROUND FLOOR

Entrance Porch

Hallway

Lounge: 12'2 x 10'4 (3.71m x 3.15m)

Dining Area/ Kitchen: 15'10 at widest point x 12'2 (4.83m x 3.71m)

Conservatory: 11'2 x 9'3 (3.41m x 2.82m)

Bedroom 4: 14'8 x 9'3 (4.47m x 2.82m)

Utility Room: 9'6 x 4'11 (2.90m x 1.50m)

FIRST FLOOR

Landing

Bedroom 1: 12'2 x 9'7 (3.71m x 2.92m)

Bedroom 2: 12'2 x 9'4 (3.71m x 2.85m)

Bedroom 3: 8'5 x 6'1 (2.57m x 1.86m)

Bathroom

OUTSIDE

Front Garden

Driveway

Rear Garden



Main features

- Conservatory overlooking the rear garden
- Situated on a hill with stunning views over London
- Secure gated parking space on driveway
- Large rear garden great for entertaining
- Potential to extend subject to obtaining the necessary planning permission



Nearest Schools

Primary Schools: Eglinton Primary 0.1 miles, Plumcroft Primary 0.2 miles, Notre Dame Catholic Primary 0.3 miles
Secondary Schools: Plumstead Manor / Negus School 0.8 miles, Charlton School 1.0 miles, Kidbrooke School 1.1 miles



Transport Information

Train Stations: Woolwich Arsenal 0.9 miles, Woolwich Dockyard 1.1 miles, Plumstead 1.1 miles



Address

Brent Road, London, SE18



Directions

For directions to this property please contact us.



Wards
Helping you move forwards

Call Welling Branch 020 8301 6679 ■ wardsofkent.co.uk



- Legal advice should be taken to verify fixtures/fittings, planning, alterations and/or lease details
- Appliances & services are untested, dimensions are approximate and floor plans are not to scale
- Through a Homewise Home For Life Plan people aged 60+ can secure this property for up to 59% less, by purchasing a Lifetime Lease.



EPC RATING



15008115/20240115/CD/LK