



Guide Price
£475,000

Freehold

3x  1x  1x 

**Rushetts Road, West
Kingsdown, Sevenoaks,
Kent, TN15**

OVER 60?

Secure this property
for up to **59% less!**

Wards
Helping you move forwards



Main features

- Large private rear garden perfect for entertaining
- Off road parking and a garage
- Sort after road within the village
- Opportunity to add your own styling
- Central village location with Amenities

Accommodation

GROUND FLOOR

Entrance Hall
 Kitchen: 13'4 x 10'5 (4.07m x 3.18m)
 Dining Room: 12'8 x 11'5 (3.86m x 3.48m)
 Family bathroom: 8'5 x 5'6 (2.57m x 1.68m)
 Lounge: 19'7 x 13'2 (5.97m x 4.02m)
 Bedroom 1: 14'11 x 12'9 (4.55m x 3.89m)

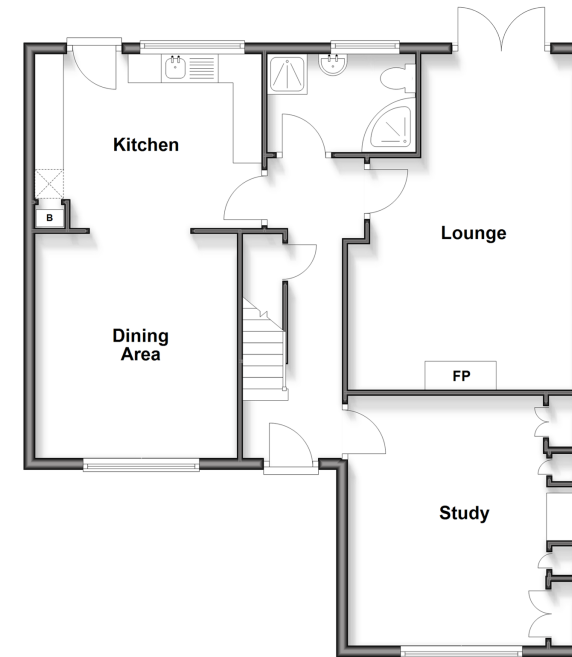
FIRST FLOOR

Landing
 Bedroom 2: 14'9 x 11'9 (4.50m x 3.58m)
 Study: 15'1 x 7'6 (4.60m x 2.29m)

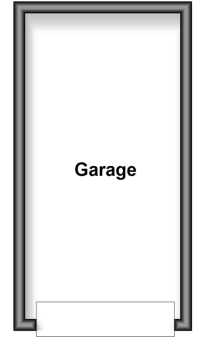
OUTSIDE

Front Garden
 Rear Garden
 Garage

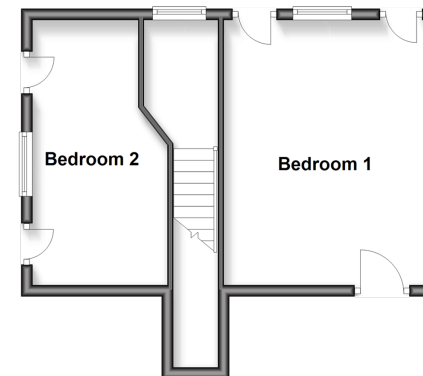
Ground Floor
 Approx. 79.6 sq. metres (856.4 sq. feet)



Outbuilding
 Approx. 14.5 sq. metres (155.9 sq. feet)



First Floor
 Approx. 33.3 sq. metres (358.6 sq. feet)



Call West Kingsdown - 01474 852816 ■ wardsofkent.co.uk

- Legal advice should be taken to verify fixtures/fittings, planning, alterations and/or lease details
- Appliances & services are untested, dimensions are approximate and floor plans are not to scale
- Through a Homewise Home For Life Plan people aged 60+ can secure this property for up to 50% less, by purchasing a Lifetime Lease



14420006/20251017/LP/JS