



OVER 60?

Secure this property
for up to **59% less!**

Price

£525,000

Freehold

2x  1x  1x 

Ash Tree Drive, West
Kingsdown, Sevenoaks,
Kent, TN15

Wards
Helping you move forwards



Main features

- **Open Plan**
- **Secluded mature garden**
- **Workshop/Garage**
- **Quiet cul-de-sac location within the Village of West Kingsdown**
- **Close to local primary schools, pub and local shops**

Accommodation

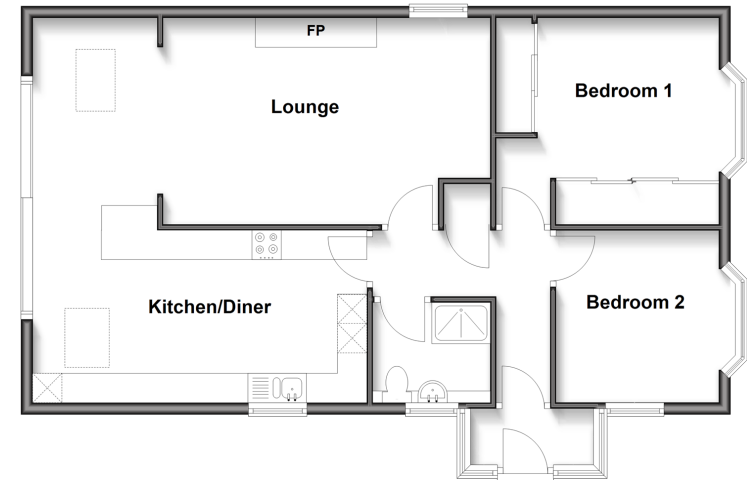
GROUND FLOOR

Entrance Hall
 Lounge: 26'4 x 11'5 (8.03m x 3.48m)
 Dining Room: 21'3 x 18'7 (6.48m x 5.67m)
 Bedroom 1: 13'9 x 11'4 (4.19m x 3.46m)
 Bedroom 2: 10'5 x 10'0 (3.18m x 3.05m)
 Shower Room: 6'4 x 6'4 (1.93m x 1.93m)

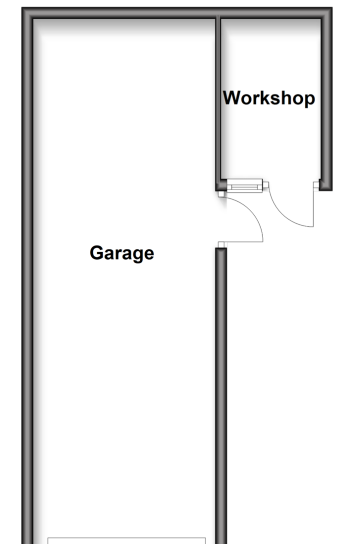
OUTSIDE

Rear Garden
 Double length garage
 Workshop
 Garden Room

Ground Floor
 Approx. 79.4 sq. metres (854.7 sq. feet)



Outbuilding
 Approx. 33.5 sq. metres (360.6 sq. feet)



Call West Kingsdown - 01474 852816 ■ wardsofkent.co.uk

- Legal advice should be taken to verify fixtures/fittings, planning, alterations and/or lease details
- Appliances & services are untested, dimensions are approximate and floor plans are not to scale
- Through a Homewise Home For Life Plan people aged 60+ can secure this property for up to 59% less, by purchasing a Lifetime Lease.



14418805/20250519/JS/JS