



Price

£1,100,000

Freehold

5x  4x  2x 

**The Grove, Off The
Bridleway, West
Kingsdown, Sevenoaks,
Kent, TN15**

OVER 60?

Secure this property
for up to **59% less!**

Wards
Helping you move forwards

Accommodation

GROUND FLOOR

Entrance Hall

Office/Bedroom 5: 11'8 x 11'7 (3.56m x 3.53m)

Lounge: 18'5 x 15'1 (5.62m x 4.60m)

Snug: 13'6 x 11'6 (4.12m x 3.51m)

Kitchen/Diner: 23'6 x 19'3 (7.17m x 5.87m)

Bedroom 1: 18'0 x 15'5 (5.49m x 4.70m)

Ensuite Shower Room: 12'0 x 6'0 (3.66m x 1.83m)

Bedroom 2: 15'7 x 10'0 (4.75m x 3.05m)

Ensuite Shower Room: 8'5 x 5'5 (2.57m x 1.65m)

Family Bathroom: 12'3 x 9'3 (3.74m x 2.82m)

FIRST FLOOR

Landing

Bedroom 3: 14'7 x 13'0 (4.45m x 3.97m)

Ensuite Shower Room: 9'5 x 6'8 (2.87m x 2.03m)

Bedroom 4: 13'2 x 11'3 (4.02m x 3.43m)

OUTBUILDINGS

Double garage

Room 1: 25'2 x 12'0 (7.68m x 3.66m)

Storage

OUTSIDE

Driveway

Wrap around garden

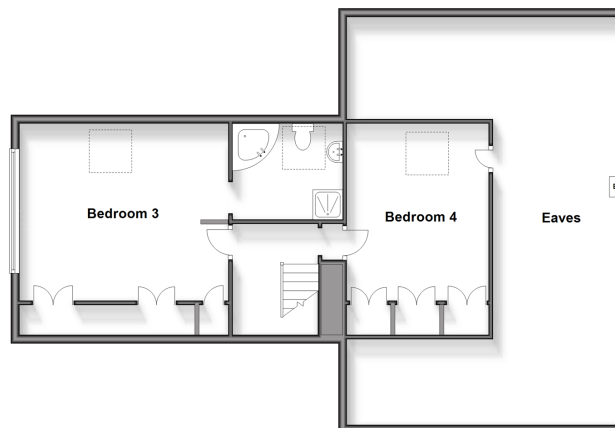
Swimming Pool

Hot tub

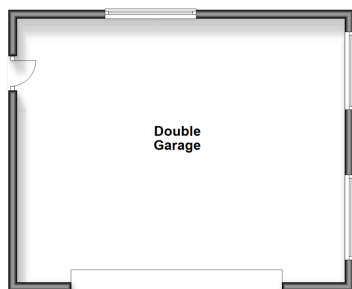
Ground Floor
Approx. 194.6 sq. metres (2094.4 sq. feet)



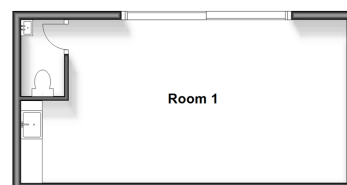
First Floor
Approx. 54.5 sq. metres (586.6 sq. feet)



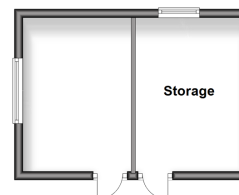
Outbuilding 1
Approx. 47.6 sq. metres (511.9 sq. feet)



Outbuilding 2
Approx. 29.2 sq. metres (314.3 sq. feet)



Outbuilding 3
Approx. 18.5 sq. metres (199.6 sq. feet)





Main features

- Secluded wrap around garden with Pool and Hot tub.
- WiFi enabled Home Office with kitchen and toilet.
- Large double garage & gated driveway for multiple cars.
- Located on outskirts of the village of West Kingsdown. Close to London Golf Club, Brands Hatch Spa Hotel and Track.



Nearest Schools

Primary Schools: West Kingsdown CofE VC Primary 0.5 miles, Fawkham C of E Voluntary Controlled Primary 3.3 miles, Ightham Primary 3.5 miles
Secondary Schools: Wrotham School 4.5 miles, Parkwood Hall School 5.0 miles, Longfield Academy 5.7 miles



Transport Information

Train Stations: Borough Green & Wrotham 4.9 miles
Otford 4.3 miles, Longfield 4.4 miles, Farningham Road 4.6 miles



Address

The Grove, Off The Bridleway, West Kingsdown, Sevenoaks, Kent, TN15



Directions

For directions to this property please contact us.



Call West Kingsdown Branch 01474 852816 ■ wardsofkent.co.uk



- Legal advice should be taken to verify fixtures/fittings, planning, alterations and/or lease details
- Appliances & services are untested, dimensions are approximate and floor plans are not to scale
- Through a Homewise Home For Life Plan people aged 60+ can secure this property for up to 59% less, by purchasing a Lifetime Lease.



14420045/20250204/GM/JS