



**Price**  
**£635,000**

**Freehold**

4x  3x  1x 

**Oaklands Close, West  
Kingsdown, Sevenoaks,  
Kent, TN15**

**OVER 60?**

Secure this property  
for up to **59% less!**

*Wards*  
Helping you move forwards



## Main features

- Driveway and off-road parking
- Perfect space for a home office
- Woodlands to the rear
- Modern interior with roof lights and a central island in the kitchen
- Walk-in shower and ensuite to main bedroom

## Accommodation

### GROUND FLOOR

- Hallway
- Lounge: 15'5 x 12'0 (4.70m x 3.66m)
- Kitchen/Dining Area: 21'6 x 14'6 (6.56m x 4.42m)
- Bathroom: 7'3 x 5'6 (2.21m x 1.68m)
- Bedroom 3: 11'4 x 9'1 (3.46m x 2.77m)
- Bedroom 4: 11'8 x 10'10 (3.56m x 3.30m)

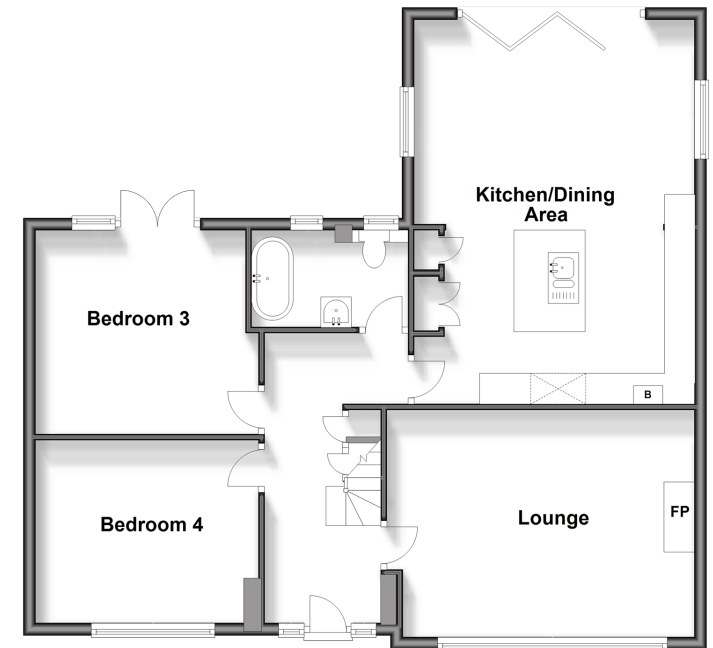
### FIRST FLOOR

- Landing
- Bedroom 1: (L-shaped) 18'7 x 16'1 (5.67m x 4.91m) plus 9'1 x 12'3 (2.77m x 3.74m)
- Ensuite Shower: 6'1 x 3'1 (1.86m x 0.94m)
- Dressing Area: 7'11 x 7'6 (2.41m x 2.29m)
- Bedroom 2: 10'8 x 9'3 (3.25m x 2.82m)
- Ensuite Shower: 8'5 x 5'11 (2.57m x 1.80m)

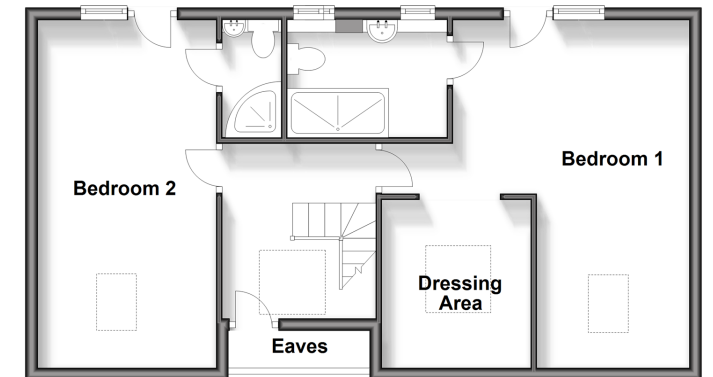
### OUTSIDE

- Front Garden
- Driveway
- Rear Garden
- Garage

**Ground Floor**  
Approx. 86.0 sq. metres (925.5 sq. feet)



**First Floor**  
Approx. 58.4 sq. metres (628.5 sq. feet)



**Call West Kingsdown - 01474 852816 ■ [wardsof Kent.co.uk](http://wardsof Kent.co.uk)**

- Legal advice should be taken to verify fixtures/fittings, planning, alterations and/or lease details
- Appliances & services are untested, dimensions are approximate and floor plans are not to scale
- Through a Homewise Home For Life Plan people aged 60+ can secure this property for up to 59% less, by purchasing a Lifetime Lease.



14419775/20240429/DW/DW