

Southfields Mews



Southfields Road, West Kingsdown, Kent, TN15 6LE

Southfields Mews

Introducing Southfields Mews, a stunning development of just two, 4-bedroom detached chalet bungalows in the heart of West Kingsdown.

Externally, ample parking is provided with driveway access for each home leading to 2 off-road spaces and a single garage per property. In addition, there are 2 spaces to be shared for visitors. With large bi-folding doors leading to an attractive rear garden with a patio and turfed area, the properties are perfectly crafted for relaxing and entertaining friends and family.

Internally, you'll love the neutral paint finish to walls and white ceilings. With Elegance carpets to bedrooms and Karndean flooring throughout, your house is ready for you to add your personal touches and make it your own.

The contemporary kitchen boasts taupe matt cabinetry and White Storm quartz worktops, alongside a BLANCO crystal white gloss sink finished with stainless steel hardware. This stunning combination is completed with high quality Neff integrated appliances including an oven, microwave and fridge/freezer to make entertaining a pleasure.

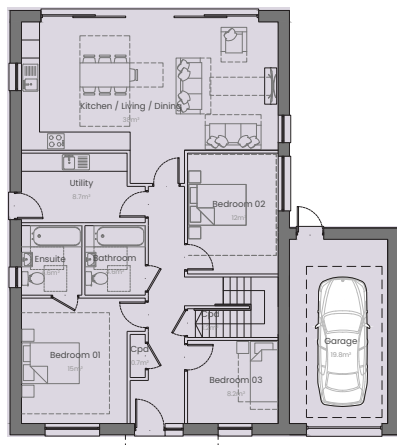
Perfect for those who enjoy the outdoors, there is a utility room off the main hallway with its own external door to the side of the property for you to leave your muddy wellies before sitting down to relax with a soothing cup of tea. There is also ample space for a washing machine and tumble dryer.

The modern design also includes wiring for Smart TVs in selected rooms and underfloor heating to the downstairs hallway and kitchen/living/dining room. The heated towel rails to the bathroom and en-suites will keep those cold winter mornings cosy. Additionally, all bathrooms will benefit from contemporary white sanitaryware and neutral sand Allure porcelain tiling throughout.

The upstairs comprises a master suite with a large bedroom overlooking the surrounding woodland and en-suite bathroom ideal for a private and spacious sanctuary.

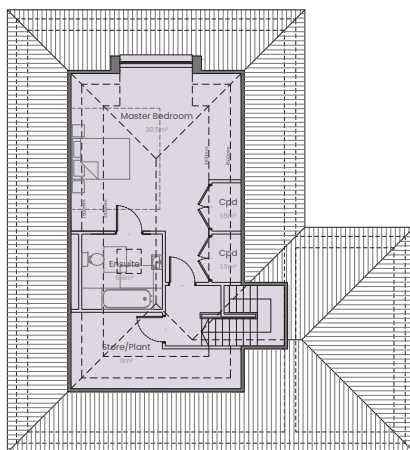
Southfields Mews really is the ideal place to call home...





GROUND FLOOR

Utility Room	3.5m x 2.5m	37'7 x 27'0
Kitchen diner	8.4m x 4.4m	90'4 x 47'4
Bedroom 1	3.5m x 4.2m	37'7 x 45'2
Bedroom 2	2.9m x 2.7m	31'2 x 29'1
Bedroom 3	3.9m x 2.9m	49'9 x 31'2
En suite	1.9m x 2.4m	20'5 x 25'8
Bathroom	1.9m x 2.4m	20'5 x 25'8



FIRST FLOOR

Bedroom 4	5.2m x 4.85m	55'9 x 52'2
En suite	2.45m x 2.15m	26'4 x 23'1
Built in wardrobes	2.3m x 0.95m	24'7 x 10'2
Loft Space	2.1m x 3.75m	22'6 x 40'4

SPECIFICATION

GENERAL

- Karndean flooring throughout
- Elegance carpet to bedrooms and hallways upstairs
- Economical underfloor heating to ground floor
- Double glazed windows
- Wiring for smart TV fittings to select rooms
- 10-year Buildzone structural warranty

KITCHEN/DINING

- Taupe matt finish cabinetry
- White Storm Silestone quartz worktop
- BLANCO crystal white gloss sink
- Stainless steel hardware throughout
- Neff integrated appliances including oven, microwave and fridge/freezer
- Bi-folding doors to rear garden

LOUNGE AREA

- 2 X TV points to various areas ready for Smart TV's

BATHROOM/ENSUITES

- Contemporary white bathroom suites
- Chrome heated towel rails and fittings
- Allure porcelain tiling to floors and walls in sand

EXTERNAL

- Driveway access for each home
- Single garage to each home
- Landscaped front and rear garden with pathway and Sandstone paving

LOCAL AREA

Situated in the highly desirable village of West Kingsdown in the heart of Kent's upmarket Sevenoaks District, Southfields Mews' location elevates this new contemporary development to another level.

From a location standpoint, with both the A20, M20 and M26 motorway a short drive away, you have superb access to Kent's road network. So, whether that's needing access to Greater London, Surrey or the east of the county, West Kingsdown is ideally placed from a commuter point of view. Likewise, both Eynsford and Kemsing train stations are around five miles away offering ready access into the capital.

For those looking for quality education options for their children, there are 3 Ofsted-rated 'Good' or better primary schools in West Kingsdown and the surrounding areas. Likewise, in the Sevenoaks District, there are a number of good quality secondary school options available.

For convenience, the village has a handy parade of shops with a range of amenities well catered for. If needing a fuller range of retail options, the acclaimed Bluewater Shopping Centre is 18 minutes away; whether it's a spot of retail therapy, a movie or drinks and a bite to eat, Bluewater is handily located. Alternatively, Swanley has a decent range of amenities for all the demands of modern life too.

For petrolheads, be sure to visit Brands Hatch Circuit, with a variety of race days to enjoy. Likewise, golfers have the prestigious London Golf Club nearby and half a dozen other courses within a comfortable driving distance. And be sure to take advantage of the plenty of outdoor space in West Kingsdown and the surrounding areas -the North Downs offer excellent opportunities for walking, cycle routes and exploring the great outdoors. Kent is the Garden of England after all!

Southfields Road, West Kingsdown, Kent, TN15 6LE



Wards
Land & New Homes

01474 852816
west.kingsdown@wardsofkent.co.uk

These particulars are provided as a general guide and do not constitute any part of an offer or contract. Whilst every endeavour has been made to provide accurate measurements and a fair description of the properties, this information is not guaranteed. This brochure is intended to provide an indication of the general style of our development. The developer reserves the right to alter or vary the design and specification at any time for any reason without prior notice. External finishes and elevational treatments to the houses, garages and parking shown may vary or change, sanitary ware and kitchen finishes may differ from that in images. Please note dimensions are approximate +/- 50mm and are not intended to be used for carpet sizes, appliance spaces or furniture items. Driving and walking times are from Google Maps. Please check times prior to travel.