



Price

£580,000

Freehold

4x  2x  2x 

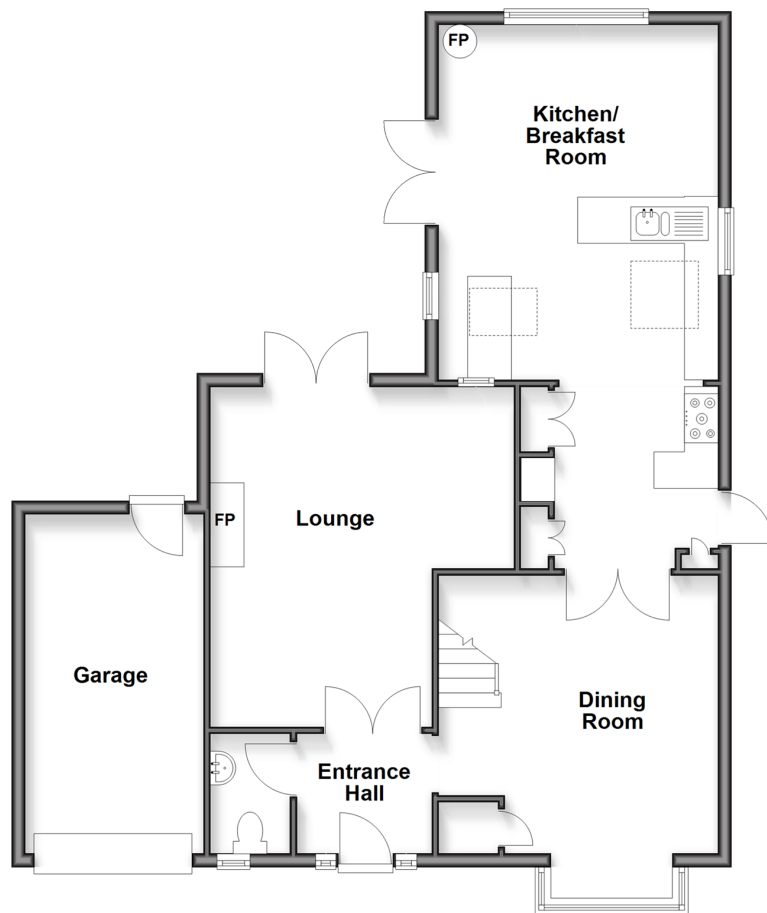
**Chequers Close,
Walderslade Woods,
Chatham, Kent, ME5**

OVER 60?

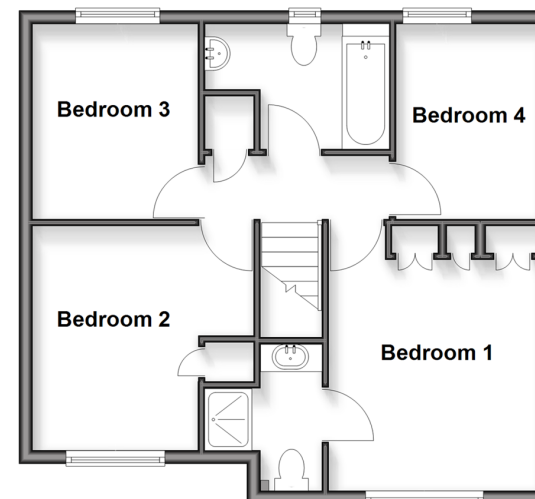
Secure this property
for up to **59% less!**

Wards
Helping you move forwards

Ground Floor
Approx. 89.0 sq. metres (958.0 sq. feet)



First Floor
Approx. 50.2 sq. metres (540.7 sq. feet)



Accommodation

GROUND FLOOR

Entrance Hall

Cloakroom : 5'9 x 3'8 (1.75m x 1.12m)

Dining Room : 13'6 x 11'2 (4.12m x 3.41m)

Lounge : 16'7 x 10'8 (5.06m x 3.25m)

Kitchen/Breakfast Room : (L-shaped) 16'6 x 13'8 (5.03m x 4.17m) plus 11'8 x 9'4 (3.56m x 2.85m)

FIRST FLOOR

Landing

Bedroom 1 : 14'3 x 10'0 (4.35m x 3.05m)

En Suite Shower Room: 7'2 x 6'1 (2.19m x 1.86m)

Bedroom 2 : 11'3 x 10'9 (3.43m x 3.28m)

Bedroom 3 : 9'4 x 8'1 (2.85m x 2.47m)

Bedroom 4 : 9'1 x 7'0 (2.77m x 2.14m)

Family Bathroom : 9'1 x 6'4 (2.77m x 1.93m)

OUTSIDE

Front Garden

Driveway

Garage

Rear Garden



Main features

- A beautifully extended detached house
- Rare opportunity set in Walderslade Woods
- Two reception rooms and a well designed extended Kitchen
- Set on a niche corner plot which secluded
- A short drive to M2/M20 motorway connections



Nearest Schools

Primary Schools: Tunbury Primary 0.4 miles, Swingate Primary 0.6 miles, Lordswood Junior School 0.8 miles

Secondary Schools: Greenacre School 1.4 miles, Walderslade Girls' School 1.5 miles, Bradfields School 1.8



Transport Information

Train Stations: Aylesford 3.4 miles, New Hythe 3.4 miles, Chatham 3.5 miles



Address

Chequers Close, Walderslade Woods, Chatham, Kent, ME5



Directions

For directions to this property please contact us.



Wards
Helping you move forwards

Call Walderslade Branch 01634 865661 ■ wardsofkent.co.uk



■ Legal advice should be taken to verify fixtures/fittings, planning, alterations and/or lease details ■ Appliances & services are untested, dimensions are approximate and floor plans are not to scale
■ Through a Homewise Home For Life Plan people aged 60+ can secure this property for up to 50% less, by purchasing a Lifetime Lease.



12144608/20250901/ML/AH