

**OVER 60?**

Secure this property  
for up to **59% less!**



**Price**

**£600,000**

**Freehold**

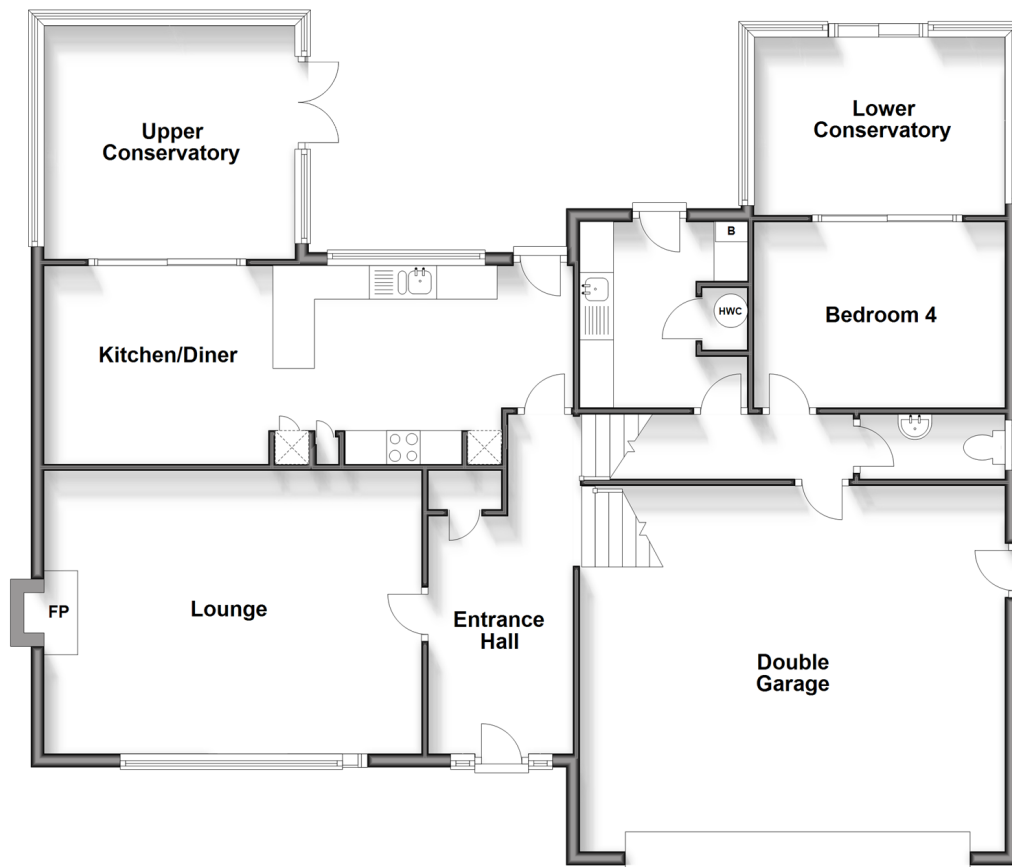
4x  3x  1x 

Lambourn Way, Lords Wood, Chatham,  
Kent, ME5

*Wards*  
Helping you move forwards

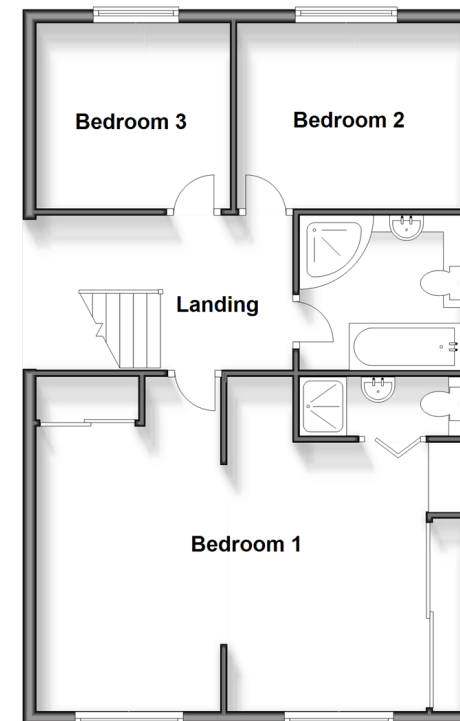
### Split Level Ground Floor

Approx. 140.9 sq. metres (1516.6 sq. feet)



### First Floor

Approx. 64.9 sq. metres (698.6 sq. feet)



## Accommodation

### SPLIT LEVEL - GROUND FLOOR

Entrance Hall

Lounge : 17'2 x 13'8 (5.24m x 4.17m)

Kitchen/Diner : 25'1 x 9'4 (7.65m x 2.85m)

Upper Conservatory : 12'3 x 11'2 (3.74m x 3.41m)

Utility Room : 9'0 x 8'2 (2.75m x 2.49m)

Bedroom 4: 12'3 x 9'0 (3.74m x 2.75m)

Lower Conservatory : 12'7 x 8'7 (3.84m x 2.62m)

Cloakroom : 7'0 x 3'2 (2.14m x 0.97m)

### FIRST FLOOR

Landing

Main Bedroom : 25'1 x 11'3 (7.65m x 3.43m)

En-Suite Shower Room : 8'3 x 2'9 (2.52m x 0.84m)

Bedroom 2 : 13'7 x 9'4 (4.14m x 2.85m)

Bedroom 3 : 11'4 x 9'1 (3.46m x 2.77m)

### OUTSIDE

Double Garage

In and Out Driveway

Front and Rear Garden



## Main features

- Large double bed roomed detached house
- In and out driveway with double garage and inspection pit
- Located in a highly sought after area
- Downstairs cloakroom Utility room
- Fantastic proximity for amenities and local motorway links



### Nearest Schools

Primary Schools: St Benedict's RC Primary 0.0 miles, Swingate Primary 0.4 miles, Lordswood Junior School 0.7 miles

Secondary Schools: Walderslade Girls' School 2.3 miles,



### Transport Information

Train Stations: Snodland 4.2 miles, Aylesford 4.2 miles, Maidstone East 4.3 miles



### Address

Lambourn Way, Lords Wood, Chatham, Kent, ME5



### Directions

For directions to this property please contact us.



**Wards**  
Helping you move forwards

Call Walderslade Branch 01634 865661 ■ [wardsofkent.co.uk](http://wardsofkent.co.uk)



■ Legal advice should be taken to verify fixtures/fittings, planning, alterations and/or lease details ■ Appliances & services are untested, dimensions are approximate and floor plans are not to scale  
■ Through a Homewise Home For Life Plan people aged 60+ can secure this property for up to 59% less, by purchasing a Lifetime Lease.

EPC RATING

CURRENT:	POTENTIAL:
C(69)	C(76)

12144032/20240501/ML/KG