



**OVER 60?**

Secure this property  
for up to **59% less!**

**Guide Price**  
**£300,000**

**Freehold**

3x  1x  1x 

**Shanklin Close,  
Walderslade, Chatham,  
Kent, ME5**

*Wards*  
Helping you move forwards





## Main features

- End of terrace with parking for multiple cars
- Well presented throughout
- Modern fitted kitchen
- Fitted Wardrobes
- Good sized rear garden
- Amenities closeby

## Accommodation

### GROUND FLOOR

Entrance Porch

Lounge : 15'3 x 14'3 (4.65m x 4.35m)

Kitchen: 14'2 x 8'6 (4.32m x 2.59m)

### FIRST FLOOR

Landing

Bedroom 1 : 12'7 x 8'1 (3.84m x 2.47m)

Bedroom 2 : 9'0 x 7'9 (2.75m x 2.36m)

Bedroom 3 : 9'4 x 5'11 (2.85m x 1.80m)

Bathroom : 6'1 x 6'0 (1.86m x 1.83m)

### OUTSIDE

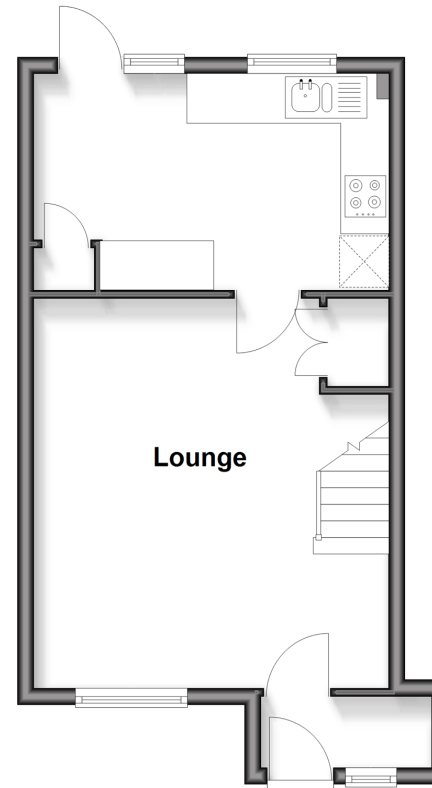
Front Garden

Driveway

Rear Garden

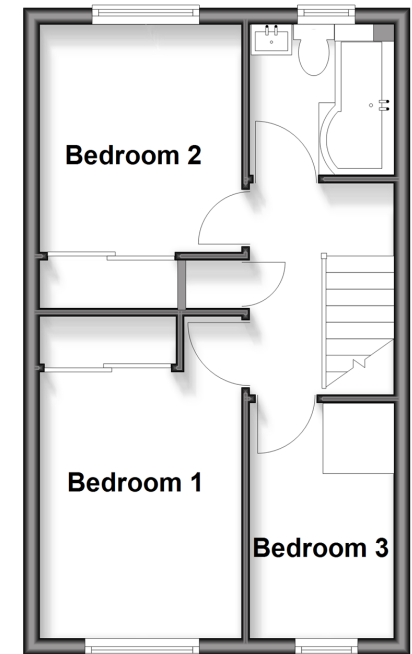
### Ground Floor

Approx. 34.2 sq. metres (368.6 sq. feet)



### First Floor

Approx. 32.3 sq. metres (347.6 sq. feet)



**Call Walderslade - 01634 865661 ■ [wardsofkent.co.uk](http://wardsofkent.co.uk)**

- Legal advice should be taken to verify fixtures/fittings, planning, alterations and/or lease details
- Appliances & services are untested, dimensions are approximate and floor plans are not to scale
- Through a Homewise Home For Life Plan people aged 60+ can secure this property for up to 50% less, by purchasing a Lifetime Lease



12130325/20251217/ML/AJB