



**OVER 60?**

Secure this property  
for up to **59% less!**

**Guide Price**

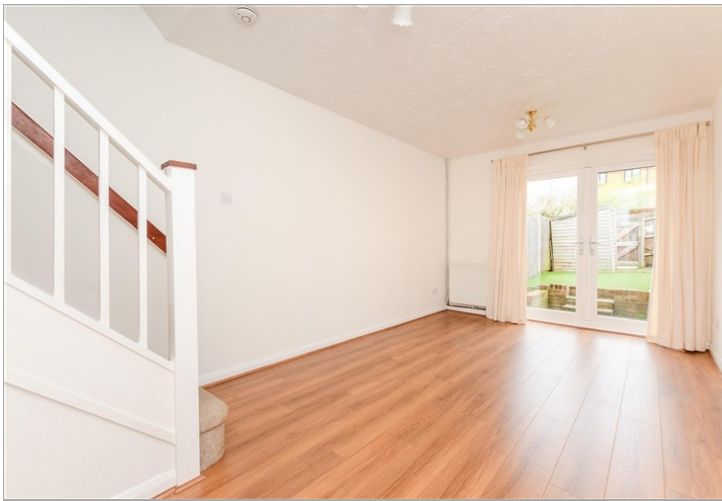
**£230,000**

**Freehold**

2x  1x  1x 

**Mermaid Close,  
Walderslade, Chatham,  
Kent, ME5**

*Wards*  
Helping you move forwards



## Main features

- Allocated parking directly to the rear
- Lounge and separate kitchen
- Newly redecorated, new flooring in the lounge
- A short drive to London and the Kent coast
- Idea first time and no chain

## Accommodation

### GROUND FLOOR

Entrance Hall

Kitchen : 6'8 x 6'6 (2.03m x 1.98m)

Lounge : 16'6 x 9'6 (5.03m x 2.90m)

### FIRST FLOOR

Landing

Bedroom 1: 10'1 x 9'6 (3.08m x 2.90m)

Bedroom 2 : 8'9 x 6'6 (2.67m x 1.98m)

Bathroom : 6'6 x 6'0 (1.98m x 1.83m)

### OUTSIDE

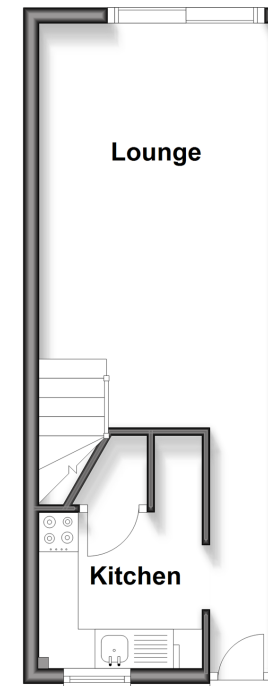
Front Garden

Rear Garden

Allocated Parking

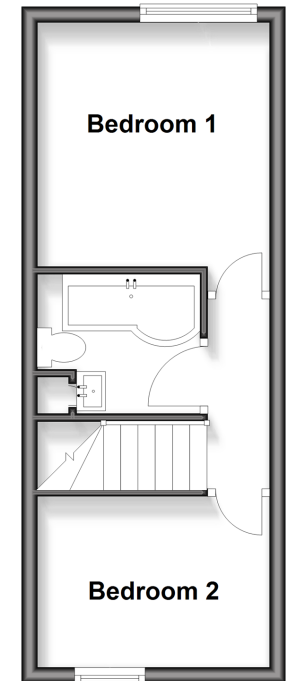
### Ground Floor

Approx. 24.4 sq. metres (262.7 sq. feet)



### First Floor

Approx. 24.4 sq. metres (262.7 sq. feet)



**Call Walderslade - 01634 865661 ■ [wardsofkent.co.uk](http://wardsofkent.co.uk)**

- Legal advice should be taken to verify fixtures/fittings, planning, alterations and/or lease details
- Appliances & services are untested, dimensions are approximate and floor plans are not to scale
- Through a Homewise Home For Life Plan people aged 60+ can secure this property for up to 50% less, by purchasing a Lifetime Lease



12144717/20251215/ML/AJB