

**OVER 60?**

Secure this property  
for up to **59% less!**



**Price**

**£550,000**

**Freehold**

5x  3x  2x 

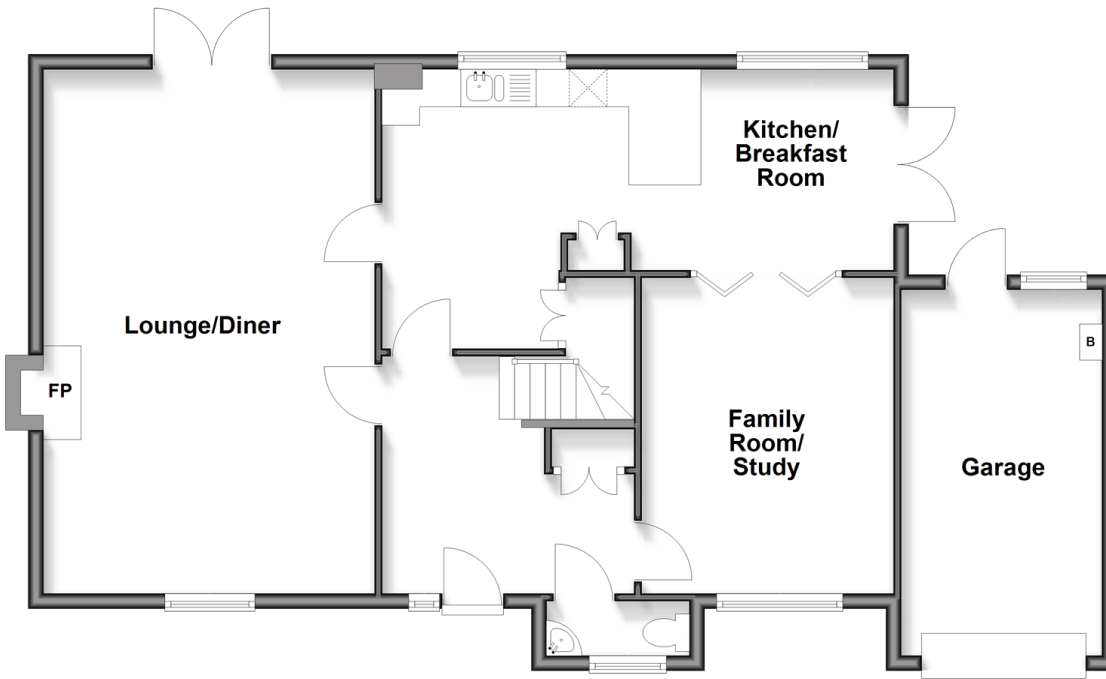
Marston Close, Walderslade, Chatham,  
Kent, ME5

*Wards*  
Helping you move forwards



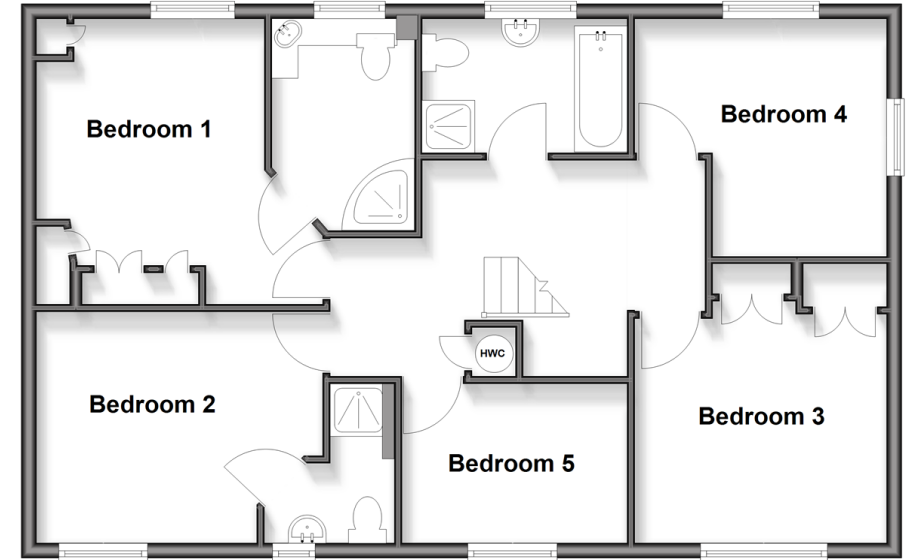
## Ground Floor

Approx. 93.7 sq. metres (1008.4 sq. feet)



## First Floor

Approx. 78.7 sq. metres (847.2 sq. feet)



## Accommodation

### GROUND FLOOR

Hallway  
Downstairs Cloakroom  
Lounge/Diner : 22'8 x 14'3 (6.91m x 4.35m)  
Family Room/Study : 13'7 x 10'8 (4.14m x 3.25m)  
Kitchen/Breakfast Room: 22'6 x 8'5 (6.86m x 2.57m)

### FIRST FLOOR

Landing  
Bedroom 1 : 12'6 x 9'6 (3.81m x 2.90m)  
En Suite Shower Room : 8'6 x 6'2 (2.59m x 1.88m)  
Bedroom 2 : 12'0 x 9'8 (3.66m x 2.95m)  
En Suite Shower Room : 6'9 x 5'5 (2.06m x 1.65m)

Bedroom 3 : 11'0 x 9'7 (3.36m x 2.92m)  
Bedroom 4 : 11'2 x 11'1 (3.41m x 3.38m)  
Bedroom 5 : 10'3 x 6'9 (3.13m x 2.06m)

### OUTSIDE

Front Garden  
Driveway  
Garage  
Rear Garden



## Main features

- Generously sized bedrooms, including two with en-suite bathrooms
- Modern family bathroom and convenient downstairs Cloakroom
- Large ground floor study ideal for home office or playroom
- Garage and private driveway providing ample off-road parking
- Close to schools, amenities, and motorway links



### Nearest Schools

Primary Schools: St Thomas More RC Primary 0.9 miles, Tunbury Primary 0.9 miles, Oaklands Junior School 1.0 miles

Secondary Schools: Walderslade Girls' School 1.1 miles,



### Transport Information

Train Stations: Chatham 3.2 miles, Cuxton 3.2 miles, Aylesford 3.4 miles



### Address

Marston Close, Walderslade, Chatham, Kent, ME5



### Directions

For directions to this property please contact us.





Call Walderslade Branch 01634 865661 ■ [wardsofkent.co.uk](http://wardsofkent.co.uk)



■ Legal advice should be taken to verify fixtures/fittings, planning, alterations and/or lease details ■ Appliances & services are untested, dimensions are approximate and floor plans are not to scale  
■ Through a Homewise Home For Life Plan people aged 60+ can secure this property for up to 50% less, by purchasing a Lifetime Lease.



12144684/20251113/ML/AH