



OVER 60?

Secure this property
for up to **59% less!**

Price

£250,000

Freehold

2x  1x  1x 

**Orbit Close,
Walderslade Woods,
Chatham, Kent, ME5**

Wards
Helping you move forwards



Main features

- Located in the sought after **Walderslade Woods**
- Two well-proportioned bedrooms
- Lovely rear garden – ideal for outdoor dining/relaxation
- Allocated parking to the rear
- Close to local amenities – shops, schools, and transport links nearby

Accommodation

GROUND FLOOR

Entrance Hall

Kitchen: 8'1 x 6'8 (2.47m x 2.03m)

Lounge : 14'8 x 13'0 (4.47m x 3.97m)

FIRST FLOOR

Landing

Bedroom 1 : 11'3 x 9'9 (3.43m x 2.97m)

Bedroom 2 : 11'4 x 6'8 (3.46m x 2.03m)

OUTSIDE

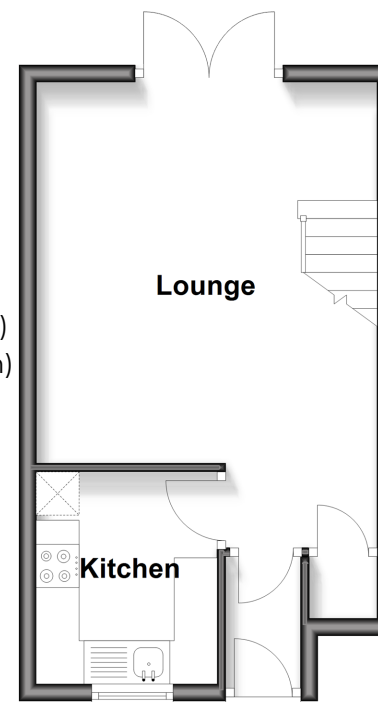
Front Garden

Rear Garden

Allocated Parking

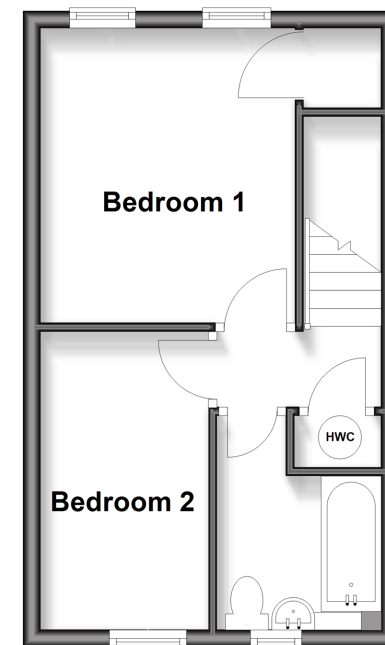
Ground Floor

Approx. 27.0 sq. metres (290.8 sq. feet)



First Floor

Approx. 27.7 sq. metres (298.0 sq. feet)



Call Walderslade - 01634 865661 ■ wardsofkent.co.uk

- Legal advice should be taken to verify fixtures/fittings, planning, alterations and/or lease details
- Appliances & services are untested, dimensions are approximate and floor plans are not to scale
- Through a Homewise Home For Life Plan people aged 60+ can secure this property for up to 50% less, by purchasing a Lifetime Lease.



12135273/20251003/ML/AH