



**Guide Price**

**£290,000**

**Freehold**

3x  1x  2x 

**Gorse Avenue,  
Walderslade, Chatham,  
Kent, ME5**

**OVER 60?**

Secure this property  
for up to **59% less!**

*Wards*  
Helping you move forwards





## Main features

- End-of-terrace position offering enhanced privacy and natural light
- Generous front, side, and rear gardens
- Private driveway providing off-street parking
- Set on a good-sized plot with potential to extend (subject to planning permission)

## Accommodation

### GROUND FLOOR

Entrance Porch

Entrance Hall

Kitchen : 10'4 x 7'9 (3.15m x 2.36m)

Diner : 10'5 x 8'6 (3.18m x 2.59m)

Dining Area : 9'0 x 6'0 (2.75m x 1.83m)

Lounge : 12'7 x 10'6 (3.84m x 3.20m)

Conservatory : 9'0 x 7'3 (2.75m x 2.21m)

### FIRST FLOOR

Landing

Bedroom 1 : 14'7 x 8'5 (4.45m x 2.57m)

Bedroom 2 : 14'5 x 8'0 (4.40m x 2.44m)

Bedroom 3 : 9'5 x 7'7 (2.87m x 2.31m)

Bathroom : 8'6 x 8'0 (2.59m x 2.44m)

### OUTSIDE

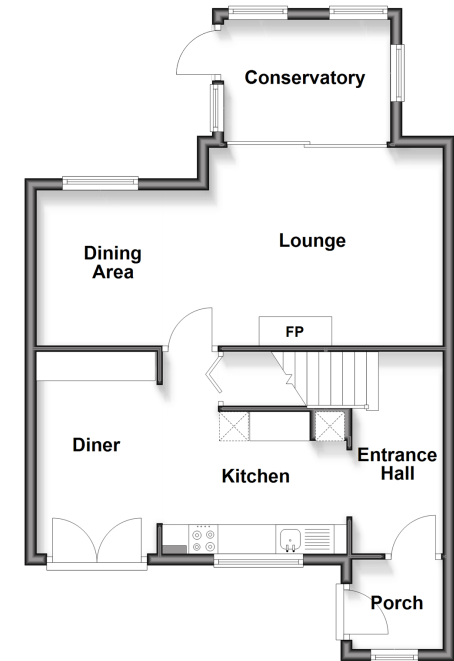
Front Garden

Side Garden

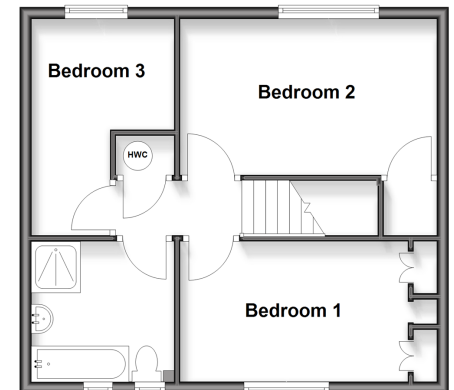
Rear Garden

Driveway

**Ground Floor**  
Approx. 55.4 sq. metres (596.3 sq. feet)



**First Floor**  
Approx. 43.6 sq. metres (469.5 sq. feet)



**Call Walderslade - 01634 865661 ■ [wardsofkent.co.uk](http://wardsofkent.co.uk)**

- Legal advice should be taken to verify fixtures/fittings, planning, alterations and/or lease details
- Appliances & services are untested, dimensions are approximate and floor plans are not to scale
- Through a Homewise Home For Life Plan people aged 60+ can secure this property for up to 50% less, by purchasing a Lifetime Lease.



12144575/20251008/ML/AH