



**Price**  
**£350,000**

**Freehold**

3x  1x  2x 

**Winchelsea Road,  
Walderslade, Chatham,  
Kent, ME5**

**OVER 60?**

Secure this property  
for up to **59% less!**

*Wards*  
Helping you move forwards





## Main features

- A good sized family semi detached house
- Garage and off-road parking for multiple vehicles
- Wrap-around Garden with potential for landscaping or expansion
- Conservatory

## Accommodation

### GROUND FLOOR

Entrance Porch

Lounge : 14'1 x 13'6 (4.30m x 4.12m)

Dining Area: 11'3 x 7'2 (3.43m x 2.19m)

Kitchen : 10'3 x 6'1 (3.13m x 1.86m)

Conservatory : 11'1 x 8'0 (3.38m x 2.44m)

### FIRST FLOOR

Landing

Bedroom 1 : 11'7 x 8'4 (3.53m x 2.54m)

Bedroom 2 : 9'5 x 7'0 (2.87m x 2.14m)

Bedroom 3 : 6'7 x 6'7 (2.01m x 2.01m)

Bathroom : 7'1 x 6'2 (2.16m x 1.88m)

### OUTBUILDING

Garage

### OUTSIDE

Front Garden

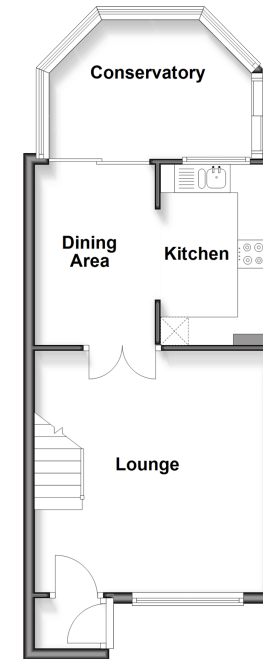
Rear Garden

Driveway

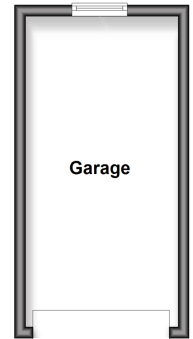
**Call Walderslade - 01634 865661 ■ [wardsofkent.co.uk](http://wardsofkent.co.uk)**

- Legal advice should be taken to verify fixtures/fittings, planning, alterations and/or lease details
- Appliances & services are untested, dimensions are approximate and floor plans are not to scale
- Through a Homewise Home For Life Plan people aged 60+ can secure this property for up to 50% less, by purchasing a Lifetime Lease.

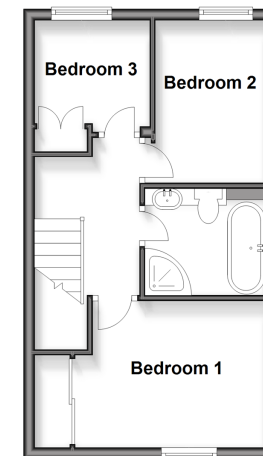
**Ground Floor**  
Approx. 41.2 sq. metres (443.7 sq. feet)



**Outbuilding**  
Approx. 15.3 sq. metres (164.5 sq. feet)



**First Floor**  
Approx. 31.6 sq. metres (340.3 sq. feet)



12144571/20250820/ML/AH