



**OVER 60?**

Secure this property  
for up to **59% less!**

**Guide Price**  
**£260,000**

**Freehold**

2x  1x  1x 

**Freshwater Road,  
Walderslade, Chatham,  
Kent, ME5**

*Wards*  
Helping you move forwards





## Main features

- Good sized bedrooms
- Conservatory offering extra living space
- Two parking spaces which is a real benefit
- Great location for amenities
- A short drive to M2/M20 motorway

## Accommodation

### GROUND FLOOR

#### Entrance Hall

Lounge : 15'7 x 11'8 (4.75m x 3.56m)

Kitchen : 11'7 x 8'7 (3.53m x 2.62m)

Conservatory : 9'4 x 8'3 (2.85m x 2.52m)

### FIRST FLOOR

#### Landing

Bedroom 1 : 11'7 x 8'8 (3.53m x 2.64m)

Bedroom 2 : 11'7 x 7'3 (3.53m x 2.21m)

Bathroom : 8'7 x 4'5 (2.62m x 1.35m)

### OUTSIDE

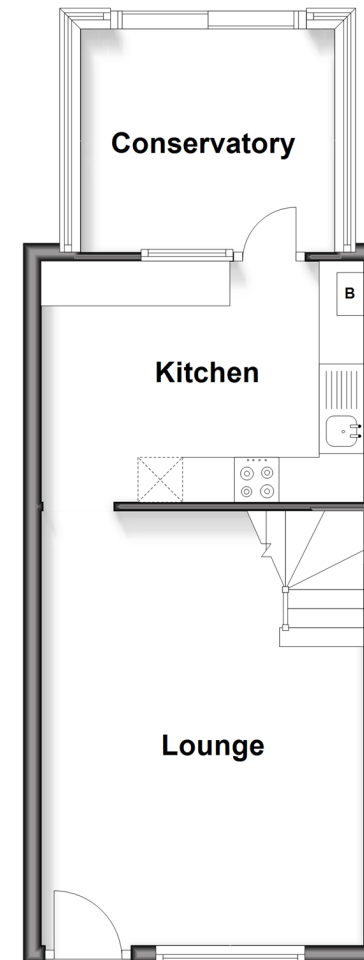
#### Front Garden

#### Two Parking Spaces

#### Rear Garden

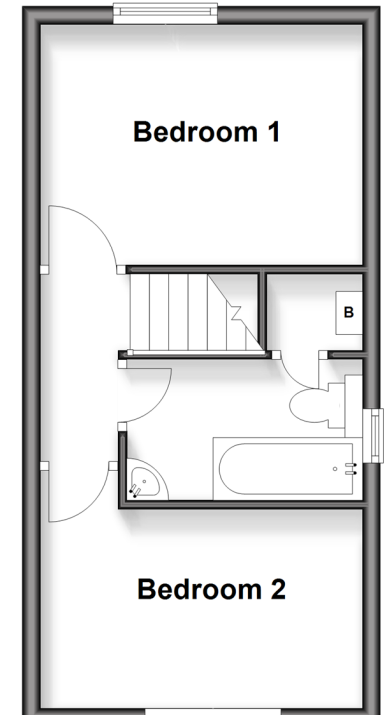
### Ground Floor

Approx. 35.1 sq. metres (377.4 sq. feet)



### First Floor

Approx. 27.7 sq. metres (297.8 sq. feet)



**Call Walderslade - 01634 865661 ■ [wardsofkent.co.uk](http://wardsofkent.co.uk)**

- Legal advice should be taken to verify fixtures/fittings, planning, alterations and/or lease details
- Appliances & services are untested, dimensions are approximate and floor plans are not to scale
- Through a Homewise Home For Life Plan people aged 60+ can secure this property for up to 50% less, by purchasing a Lifetime Lease.



12144597/20250818/ML/AH