



Price
£450,000

Freehold

4x  1x  1x 

**Celestine Close,
Chatham, Kent, ME5**

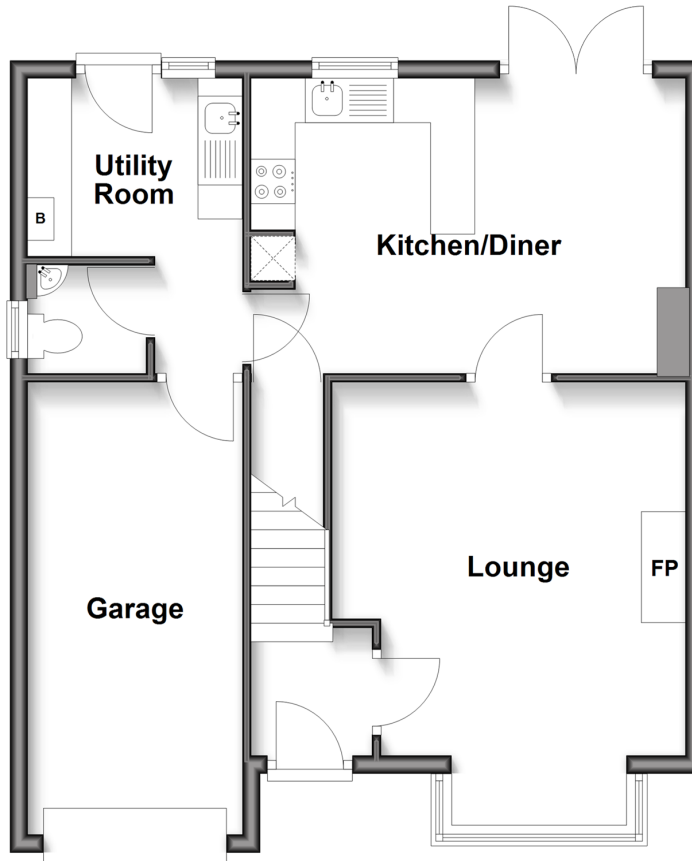
OVER 60?

Secure this property
for up to **59% less!**

Wards
Helping you move forwards

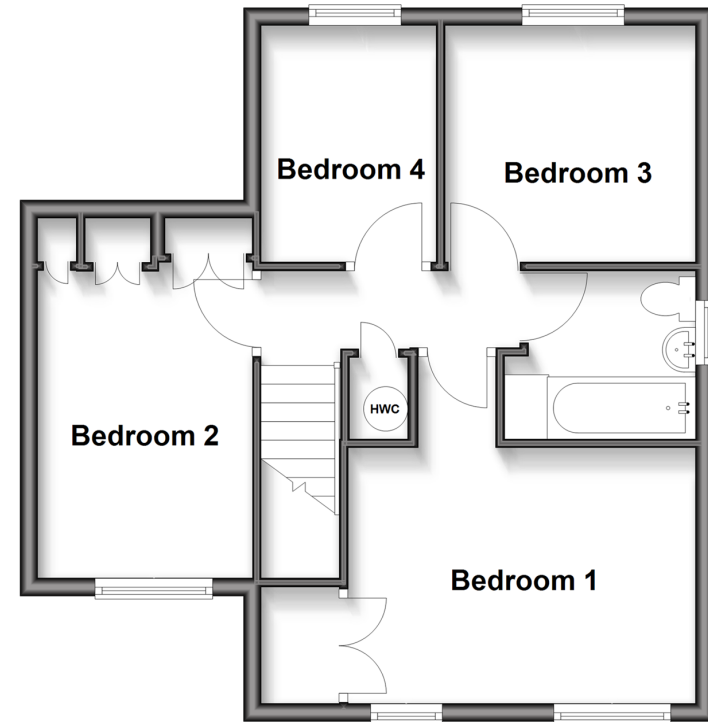
Ground Floor

Approx. 59.8 sq. metres (643.4 sq. feet)



First Floor

Approx. 47.8 sq. metres (514.4 sq. feet)



Accommodation

GROUND FLOOR

Entrance Hallway

Lounge : 14'1 x 13'11 (4.30m x 4.24m)

Kitchen/Diner : 16'4 x 11'0 (4.98m x 3.36m)

Cloakroom : 4'5 x 4'2 (1.35m x 1.27m)

Utility Room : 8'0 x 6'2 (2.44m x 1.88m)

FIRST FLOOR

Landing

Bedroom 1: 13'9 x 12'9 (4.19m x 3.89m)

Bedroom 2 : 11'5 x 7'9 (3.48m x 2.36m)

Bedroom 3 : 9'5 x 9'2 (2.87m x 2.80m)

Bedroom 4 : 9'1 x 6'8 (2.77m x 2.03m)

Family Bathroom : 6'3 x 5'4 (1.91m x 1.63m)

OUTSIDE

Front Garden

Integral Garage

Driveway

Rear Garden



Main features

- A detached house in a sought after location in Walderslade Woods
- Good sized lounge/diner
- Cloakroom and utility room
- Beautifully maintained rear garden and integral garage
- No chain



Nearest Schools

Primary Schools: Tunbury Primary 0.3 miles, Swingate Primary 0.7 miles, Walderslade Primary 0.8 miles

Secondary Schools: Greenacre School 1.3 miles, Walderslade Girls' School 1.5 miles, Bradfields School 1.7



Transport Information

Train Stations: New Hythe 3.3 miles, Aylesford 3.3 miles, Snodland 3.4 miles



Address

Celestine Close, Chatham, Kent, ME5



Directions

For directions to this property please contact us.



Wards
Helping you move forwards

Call Walderslade Branch 01634 865661 ■ wardsofkent.co.uk



■ Legal advice should be taken to verify fixtures/fittings, planning, alterations and/or lease details ■ Appliances & services are untested, dimensions are approximate and floor plans are not to scale
■ Through a Homewise Home For Life Plan people aged 60+ can secure this property for up to 59% less, by purchasing a Lifetime Lease.



12144540/20250605/ML/AH