



OVER 60?

Secure this property
for up to **59% less!**

Price

£475,000

Freehold

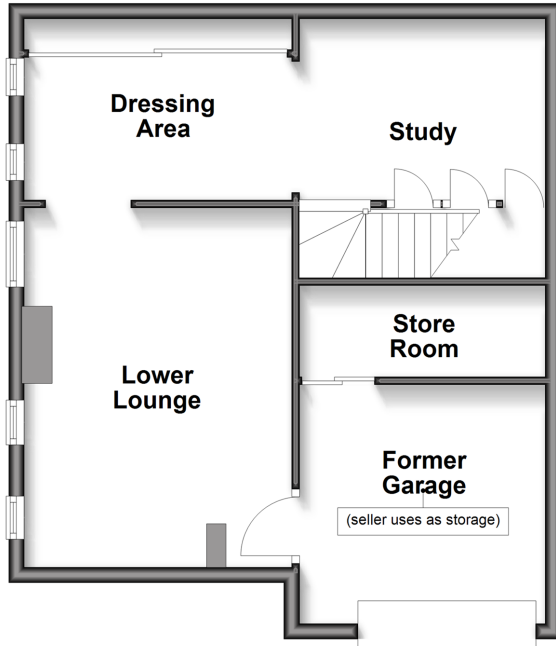
3x  2x  3x 

**Hampton Close,
Chatham, Kent, ME5**

Wards
Helping you move forwards

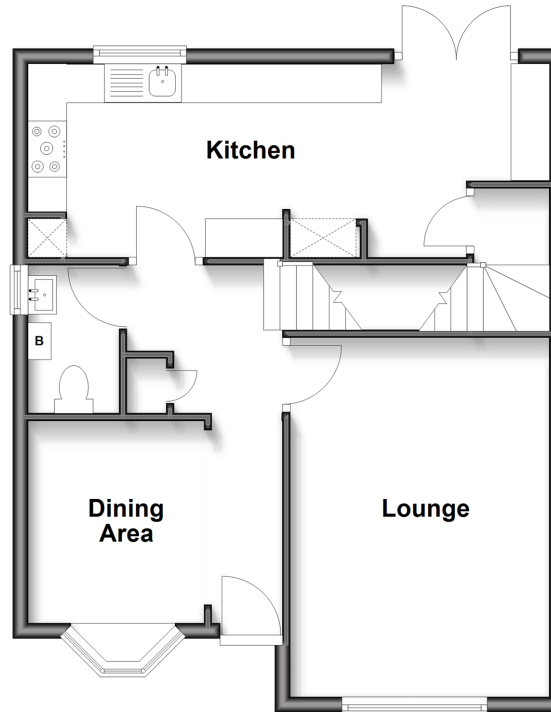
Lower Ground Floor

Approx. 50.4 sq. metres (542.8 sq. feet)



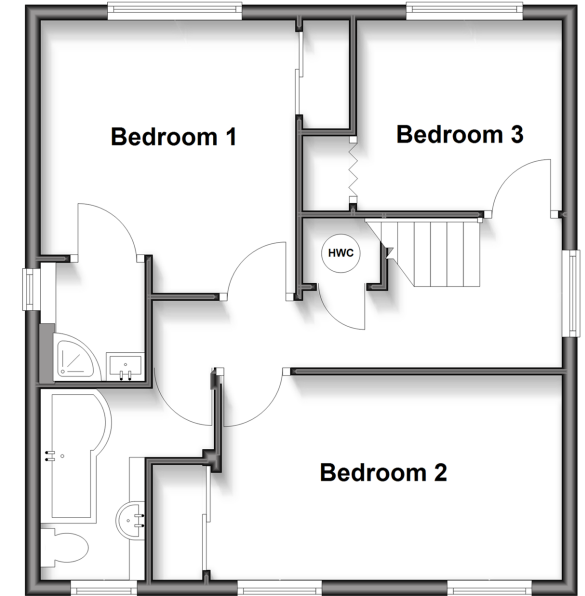
Ground Floor

Approx. 52.4 sq. metres (564.2 sq. feet)



First Floor

Approx. 49.1 sq. metres (528.5 sq. feet)



Accommodation

LOWER GROUND FLOOR

Lower Lounge : 15'0 x 10'7 (4.58m x 3.23m)

Dressing Area : 10'7 x 7'8 (3.23m x 2.34m)

Study : 9'9 x 8'2 (2.97m x 2.49m)

Store Room

Storage (former Garage) : 14'4 x 9'5 (4.37m x 2.87m)

GROUND FLOOR

Entrance Hall

Lounge : 15'3 x 11'2 (4.65m x 3.41m)

Dining Area : 8'6 x 7'5 (2.59m x 2.26m)

Cloakroom

Kitchen : 22'7 x 8'4 (6.89m x 2.54m)

FIRST FLOOR

Bedroom 1 : 11'6 x 10'9 (3.51m x 3.28m)

En Suite Shower Room : 5'1 x 4'5 (1.55m x 1.35m)

Bedroom 2 : 14'4 x 8'7 (4.37m x 2.62m)

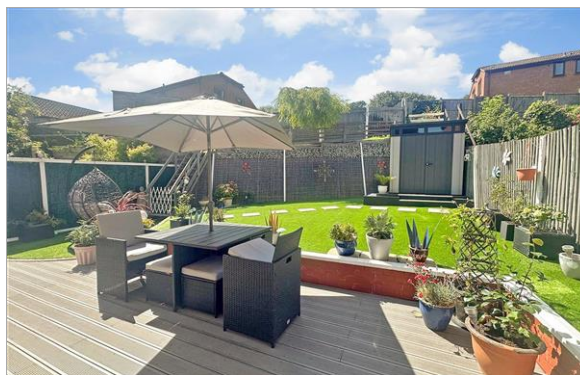
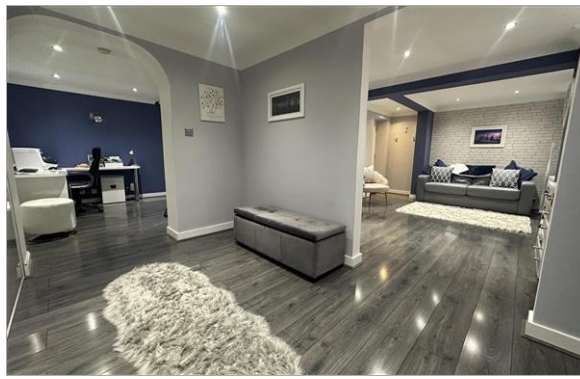
Bedroom 3 : 9'4 x 8'3 (2.85m x 2.52m)

Family Bathroom : 8'7 x 8'3 (2.62m x 2.52m)

OUTSIDE

Driveway

Rear Garden



Main features

- Immaculate spacious detached house
- Lower ground floor accommodation and study
- En suite to main bedroom
- Split level rear garden
- Close to local amenities and a short drive to M2/M20 motorway connections



Nearest Schools

Primary Schools: Maundene School 0.2 miles, Kingfisher Community Primary 0.8 miles, St Benedict's RC Primary 1.1 miles

Secondary Schools: Victory Academy 1.3 miles, The



Transport Information

Train Stations: Chatham 3.5 miles, Halling 3.6 miles, Rainham 3.7 miles



Address

Hampton Close, Chatham, Kent, ME5



Directions

For directions to this property please contact us.



Wards
Helping you move forwards

Call Walderslade Branch 01634 865661 ■ wardsofkent.co.uk



■ Legal advice should be taken to verify fixtures/fittings, planning, alterations and/or lease details ■ Appliances & services are untested, dimensions are approximate and floor plans are not to scale
■ Through a Homewise Home For Life Plan people aged 60+ can secure this property for up to 59% less, by purchasing a Lifetime Lease.



12144384/20250704/ML/AH