



Guide Price
£400,000

Freehold

3x  1x  2x 

**Bronington Close,
Walderslade, Chatham,
Kent, ME5**

OVER 60?

Secure this property
for up to **59% less!**

Wards
Helping you move forwards



Main features

- Popular family location close to local schools and facilities
- Fantastic detached house with driveway
- Great views from the lovely rear garden and spacious patio area
- A short drive to M2/M20 motorway connections
- No chain

Accommodation

GROUND FLOOR

Entrance Hall
Downstairs Cloakroom
Lounge : 15'4 x 13'2 (4.68m x 4.02m)
Kitchen
Dining Area: 10'1 x 8'2 (3.08m x 2.49m)
Conservatory : 14'0 x 6'4 (4.27m x 1.93m)
Study/Playroom (former Garage): 15'7 x 8'0 (4.75m x 2.44m)

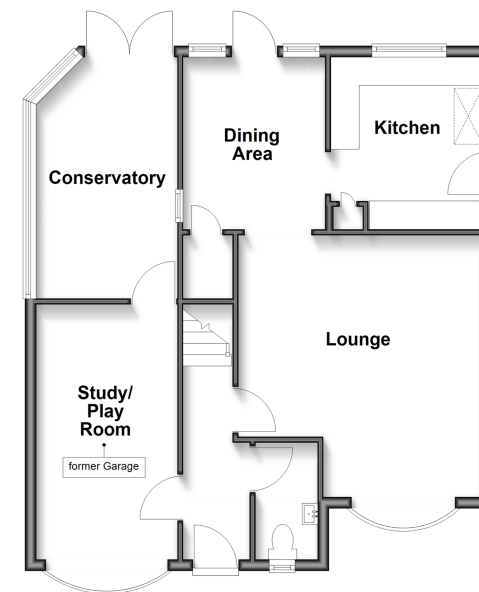
FIRST FLOOR

Landing
Bedroom 1 : 12'9 x 8'1 (3.89m x 2.47m)
Bedroom 2 : 12'4 x 9'5 (3.76m x 2.87m)
Bedroom 3 : 9'5 x 6'9 (2.87m x 2.06m)
Bathroom : 8'3 x 5'8 (2.52m x 1.73m)

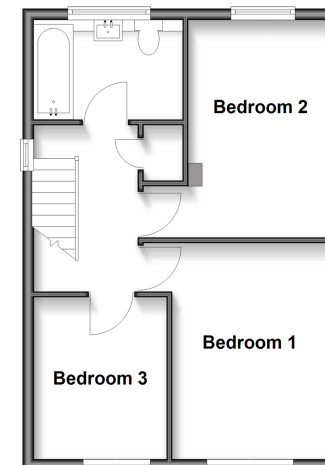
OUTSIDE

Driveway
Front Garden
Rear Garden

Ground Floor
Approx. 67.1 sq. metres (722.1 sq. feet)



First Floor
Approx. 40.9 sq. metres (440.7 sq. feet)



Call Walderslade - 01634 865661 ■ wardsofkent.co.uk

- Legal advice should be taken to verify fixtures/fittings, planning, alterations and/or lease details
- Appliances & services are untested, dimensions are approximate and floor plans are not to scale
- Through a Homewise Home For Life Plan people aged 60+ can secure this property for up to 59% less, by purchasing a Lifetime Lease.

EPC RATING Lightbulb icon 10000	CURRENT: C(71)	POTENTIAL: B(84)
The Property Ombudsman	INVESTORS IN PEOPLE 12144510/20250521/ML/AH	