



OVER 60?

Secure this property
for up to **59% less!**

Price

£400,000

Freehold

5x  2x  2x 

**Arundel Close, Lords
Wood, Chatham, Kent,
ME5**

Wards
Helping you move forwards



Main features

- Semi detached house well presented throughout
- Downstairs shower room, upstairs bathroom and utility room
- Short drive to local shops and facilities
- Integral garage
- M2/M20 motorway connections to London and the Kent coast

Accommodation

GROUND FLOOR

Entrance Porch

Downstairs Bathroom : 6'4 x 5'6 (1.93m x 1.68m)

Kitchen : 12'9 x 7'6 (3.89m x 2.29m)

Dining Area: 11'0 x 10'3 (3.36m x 3.13m)

Lounge : 13'3 x 10'2 (4.04m x 3.10m)

Utility Room: 10'0 x 7'2 (3.05m x 2.19m)

FIRST FLOOR

Landing

Bedroom 1 : 12'4 x 10'4 (3.76m x 3.15m)

Bedroom 2 : 12'9 x 8'3 (3.89m x 2.52m)

Bedroom 3: 16'0 x 7'6 (4.88m x 2.29m)

Bedroom 4: 9'8 x 6'6 (2.95m x 1.98m)

Bedroom 5 : 7'6 x 7'0 (2.29m x 2.14m)

Shower Room : 7'3 x 6'10 (2.21m x 2.08m)

OUTSIDE

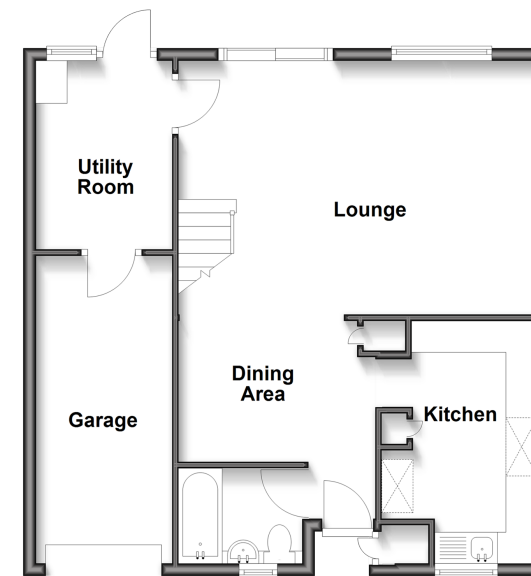
Front Garden

Large Garage : 16'6 x 7'3 (5.03m x 2.21m)

Rear Garden

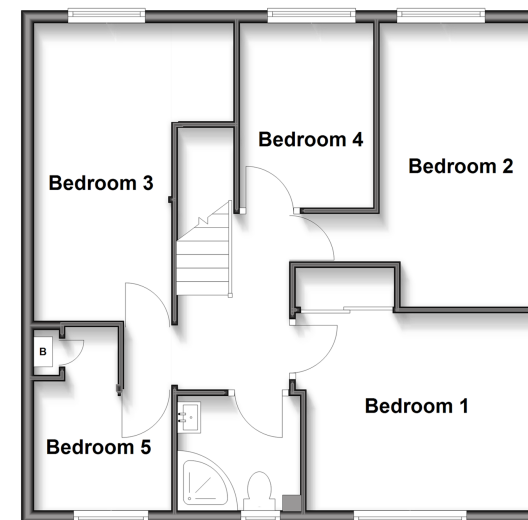
Ground Floor

Approx. 63.4 sq. metres (682.7 sq. feet)



First Floor

Approx. 62.4 sq. metres (671.5 sq. feet)



Call Walderslade - 01634 865661 ■ wardsofkent.co.uk

- Legal advice should be taken to verify fixtures/fittings, planning, alterations and/or lease details
- Appliances & services are untested, dimensions are approximate and floor plans are not to scale
- Through a Homewise Home For Life Plan people aged 60+ can secure this property for up to 59% less, by purchasing a Lifetime Lease.



12144443/20250510/ML/AH