



**Price**  
**£310,000**

**Freehold**

3x  1x  1x 

**Nash Close, Chatham,  
Kent, ME5**

**OVER 60?**

Secure this property  
for up to **59% less!**

*Wards*  
Helping you move forwards





## Main features

- Immaculate terraced house
- Situated in a quiet cul-de-sac location
- Driveway to the front
- Modern living with new kitchen and dining area
- A short drive to M2/M20 links and local schools and amenities

## Accommodation

### GROUND FLOOR

Entrance Hall

Bedroom 1: 12'8 x 6'6 (3.86m x 1.98m)

Lounge : 14'0 x 13'0 (4.27m x 3.97m)

Kitchen: 11'9 x 8'4 (3.58m x 2.54m)

Dining Area: 7'0 x 6'0 (2.14m x 1.83m)

### FIRST FLOOR

Landing

Bedroom 2: 11'5 x 10'0 (3.48m x 3.05m)

Bedroom 3 : 10'7 x 8'5 (3.23m x 2.57m)

Bathroom : 6'9 x 5'2 (2.06m x 1.58m)

### OUTSIDE

Front Garden

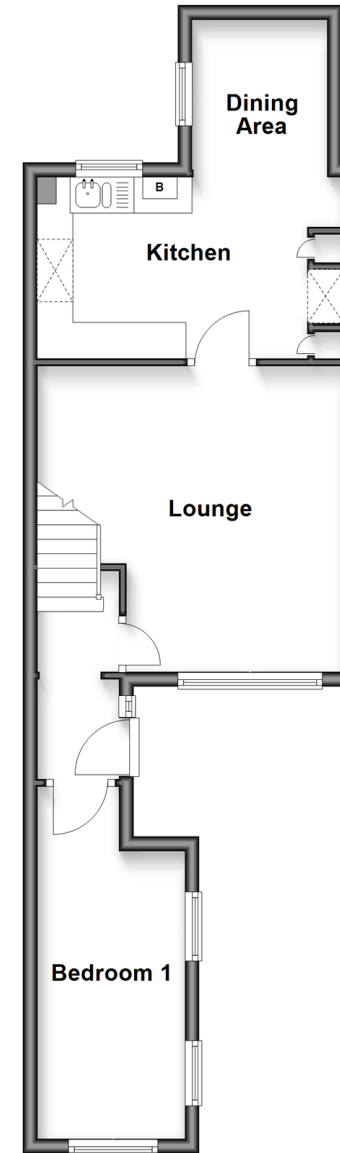
Rear Garden

**Call Walderslade - 01634 865661 ■ [wardsofkent.co.uk](http://wardsofkent.co.uk)**

- Legal advice should be taken to verify fixtures/fittings, planning, alterations and/or lease details
- Appliances & services are untested, dimensions are approximate and floor plans are not to scale
- Through a Homewise Home For Life Plan people aged 60+ can secure this property for up to 59% less, by purchasing a Lifetime Lease.

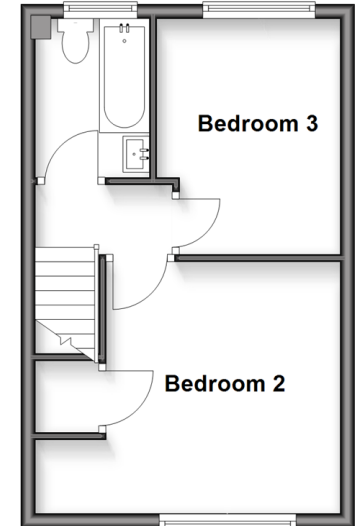
### Ground Floor

Approx. 44.6 sq. metres (479.9 sq. feet)



### First Floor

Approx. 29.4 sq. metres (316.2 sq. feet)



12144463/20250424/ABB/AH