



Price
£280,000

Freehold

2x  1x  1x 

**Romney Road,
Walderslade, Chatham,
Kent, ME5**

OVER 60?

Secure this property
for up to **59% less!**

Wards
Helping you move forwards



Main features

- Fabulous end of terraced house in a great location
- Good sized bedrooms
- Close to local amenities, schools and bus routes
- A short drive to M2/M20 connections
- Ideal first time buy/investment

Accommodation

GROUND FLOOR

Entrance Porch

Lounge : 15'7 x 11'8 (4.75m x 3.56m)

Kitchen : 11'8 x 9'5 (3.56m x 2.87m)

FIRST FLOOR

Landing

Bedroom 1 : 11'8 x 8'1 (3.56m x 2.47m)

Bedroom 2 : 11'8 x 9'10 (3.56m x 3.00m)

Bathroom : 8'7 x 4'6 (2.62m x 1.37m)

OUTSIDE

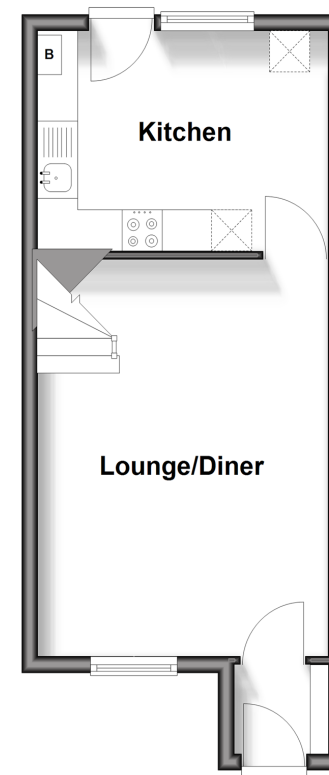
Front Garden

Rear Garden

Allocated Parking

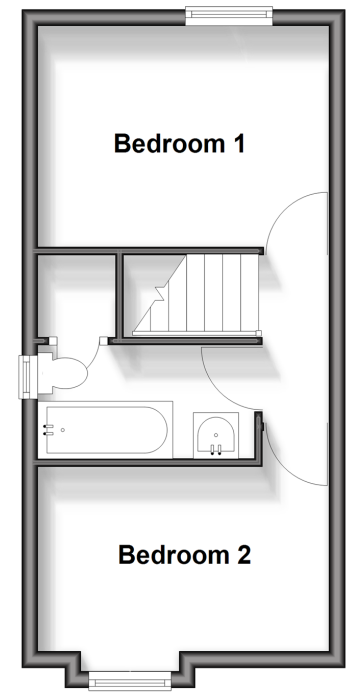
Ground Floor

Approx. 29.0 sq. metres (311.7 sq. feet)



First Floor

Approx. 27.9 sq. metres (300.0 sq. feet)



Call Walderslade - 01634 865661 ■ wardsofkent.co.uk

- Legal advice should be taken to verify fixtures/fittings, planning, alterations and/or lease details
- Appliances & services are untested, dimensions are approximate and floor plans are not to scale
- Through a Homewise Home For Life Plan people aged 60+ can secure this property for up to 59% less, by purchasing a Lifetime Lease.



12144461/20250411/PP/AH