



Price
£375,000

Freehold

4x  1x  2x 

**Jacklin Close,
Walderslade,
Birchington, Kent, ME5**

OVER 60?

Secure this property
for up to **59% less!**

Wards
Helping you move forwards



Main features

- Terrace house with double bedrooms
- Sun terrace to 3rd bedroom
- Conservatory
- Garage and driveway
- Great location close to links to M2/M20 motorway connections

Accommodation

GROUND FLOOR

Entrance Hall
Downstairs Cloakroom
Lounge : 15'0 x 10'8 (4.58m x 3.25m)
Kitchen/Dining Area : 19'0 x 12'0 (5.80m x 3.66m)
Conservatory : 18'8 x 8'1 (5.69m x 2.47m)

FIRST FLOOR

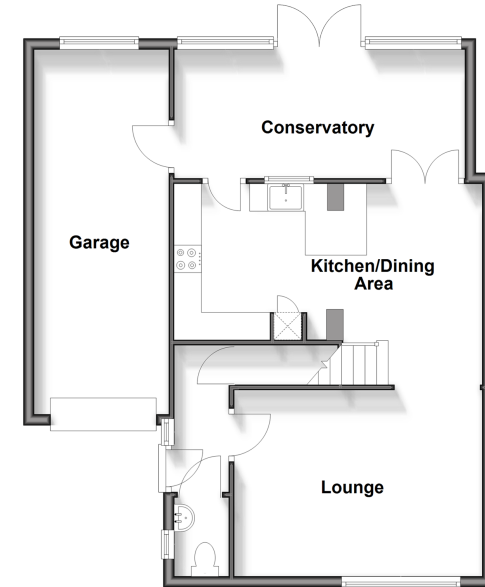
Landing
Bedroom 1: 12'1 x 11'9 (3.69m x 3.58m)
Bedroom 2 : 10'6 x 9'0 (3.20m x 2.75m)
Bedroom 3 : 14'0 x 8'2 (4.27m x 2.49m)
Terrace
Bedroom 4 : 8'3 x 7'6 (2.52m x 2.29m)
Bathroom : 6'7 x 5'4 (2.01m x 1.63m)
Toilet

OUTSIDE

Driveway
Garage
Rear Garden

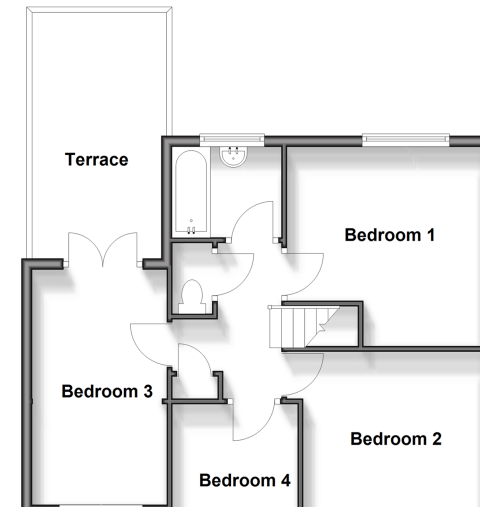
Ground Floor

Approx. 70.3 sq. metres (756.4 sq. feet)



First Floor

Approx. 50.6 sq. metres (544.6 sq. feet)



Call Walderslade - 01634 865661 ■ wardsofkent.co.uk

- Legal advice should be taken to verify fixtures/fittings, planning, alterations and/or lease details
- Appliances & services are untested, dimensions are approximate and floor plans are not to scale
- Through a Homewise Home For Life Plan people aged 60+ can secure this property for up to 59% less, by purchasing a Lifetime Lease.



12144132/20250325/ML/AH