

**OVER 60?**

Secure this property  
for up to **59% less!**



**Guide Price**  
**£350,000**  
**Freehold**

4x  1x  1x 

Allen Close, Chatham, Kent, ME5

*Wards*  
Helping you move forwards





## Main features

- Detached house in a popular location
- Downstairs cloakroom
- A short distance from local schools and shops
- Garage and off road parking to the rear
- M2/M20 motorway connections a short drive

## Accommodation

### GROUND FLOOR

Entrance Hall

Cloakroom : 5'8 x 2'8 (1.73m x 0.81m)

Lounge/Diner: 16'8 (5.08m) x 10'4 (3.15m)  
narrowing to 9'3 (2.82m)

Kitchen : 10'4 x 7'2 (3.15m x 2.19m)

### FIRST FLOOR

Landing

Bedroom 1 : 10'1 x 9'7 (3.08m x 2.92m)

Bedroom 2 : 9'9 x 8'2 (2.97m x 2.49m)

Bedroom 3 : 9'8 x 6'2 (2.95m x 1.88m)

Bedroom 4 : 7'8 x 5'9 (2.34m x 1.75m)

Family Bathroom : 6'5 x 5'7 (1.96m x 1.70m)

### OUTBUILDING

Driveway

Garage to Rear

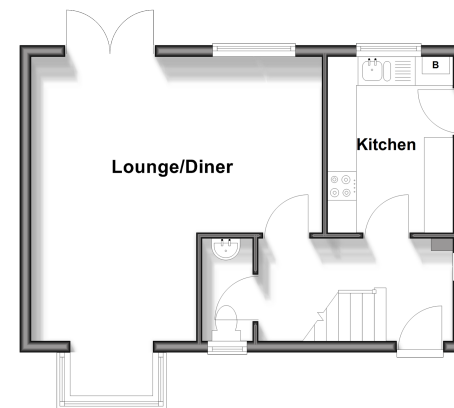
### OUTSIDE

Front Garden

Rear Garden

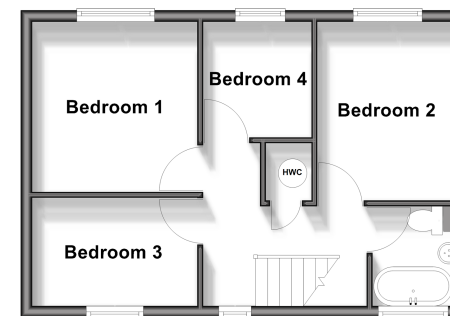
### Ground Floor

Approx. 37.2 sq. metres (400.9 sq. feet)



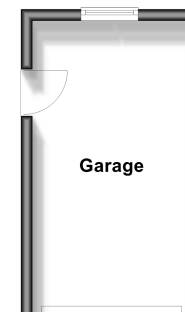
### First Floor

Approx. 36.6 sq. metres (393.5 sq. feet)



### Outbuilding

Approx. 14.4 sq. metres (154.8 sq. feet)



**Call Walderslade - 01634 865661 ■ [wardsofkent.co.uk](http://wardsofkent.co.uk)**

- Legal advice should be taken to verify fixtures/fittings, planning, alterations and/or lease details
- Appliances & services are untested, dimensions are approximate and floor plans are not to scale
- Through a Homewise Home For Life Plan people aged 60+ can secure this property for up to 50% less, by purchasing a Lifetime Lease.



12144413/20251010/ABB/AH