



**Price**  
**£325,000**

**Freehold**

3x  2x  1x 

**Harptree Drive,  
Walderslade, Chatham,  
Kent, ME5**

**OVER 60?**

Secure this property  
for up to **59% less!**

*Wards*  
Helping you move forwards





## Main features

- **Extended spacious semi detached house**
- **Wet Room (former garage) and upstairs bathroom, perfect for the growing family**
- **Handy driveway**
- **Close to local shops and amenities**
- **A short drive to M2/M20 motorway connections**

## Accommodation

### GROUND FLOOR

Hallway

Wet Room (Former Garage): 7'5 x 5'5  
(2.26m x 1.65m)

Kitchen : 18'11 x 6'3 (5.77m x 1.91m)

Utility Room : 6'3 x 4'7 (1.91m x 1.40m)

Lounge/Dining Area : 18'0 x 12'8 (5.49m x 3.86m)

Study : 16'2 x 7'8 (4.93m x 2.34m)

### FIRST FLOOR

Landing

Bedroom 1 : 12'8 up to fitted wardrobes x 6'4 (3.86m x 1.93m)

Bedroom 2: 11'9 x 9'3 (3.58m x 2.82m)

Bedroom 3 : 9'8 x 9'3 (2.95m x 2.82m)

Family Bathroom

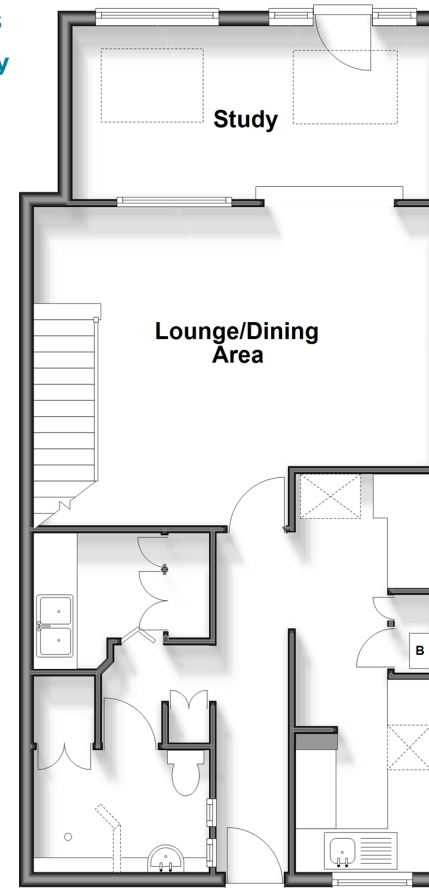
### OUTSIDE

Driveway

Rear Garden

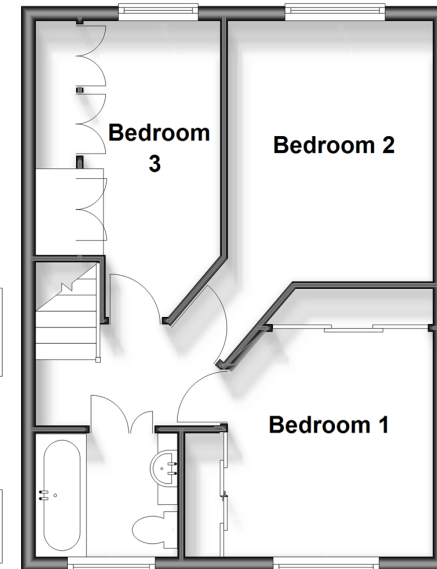
### Ground Floor

Approx. 61.8 sq. metres (665.7 sq. feet)



### First Floor

Approx. 40.0 sq. metres (430.5 sq. feet)



**Call Walderslade - 01634 865661 ■ [wardsof Kent.co.uk](http://wardsof Kent.co.uk)**

- Legal advice should be taken to verify fixtures/fittings, planning, alterations and/or lease details
- Appliances & services are untested, dimensions are approximate and floor plans are not to scale
- Through a Homewise Home For Life Plan people aged 60+ can secure this property for up to 59% less, by purchasing a Lifetime Lease.



12142717/20250315/ML/AH